

Phospho-GSK3 β -Y216 + GSK3 α -Y279 Rabbit mAb

Catalog No.: AP1530 **Recombinant**

Basic Information

Observed MW

46kDa/51kDa

Calculated MW

51kDa/46kDa

Category

Primary antibody

Applications

WB, ELISA

Cross-Reactivity

Mouse

CloneNo number

ARC68446

Background

The protein encoded by this gene is a serine-threonine kinase, belonging to the glycogen synthase kinase subfamily. It is involved in energy metabolism, neuronal cell development, and body pattern formation. Polymorphisms in this gene have been implicated in modifying risk of Parkinson disease, and studies in mice show that overexpression of this gene may be relevant to the pathogenesis of Alzheimer disease. Alternatively spliced transcript variants encoding different isoforms have been found for this gene.

Recommended Dilutions

WB 1:1000 - 1:4000**ELISA** Recommended starting concentration is 1 μ g/mL. Please optimize the concentration based on your specific assay requirements.

Immunogen Information

Gene ID

2931/2932

Swiss Prot

P49840/P49841

Immunogen

Synthetic peptide. This information is considered to be commercially sensitive.

SynonymsGSK3B; GSK 3 beta; GSK3A; GSK 3 alpha; Phospho-GSK3 α -S21+GSK3 β -S9

Contact

 | 400-999-6126 | cn.market@abclonal.com.cn | www.abclonal.com.cn

Product Information

Source

Rabbit

Isotype

IgG

Purification

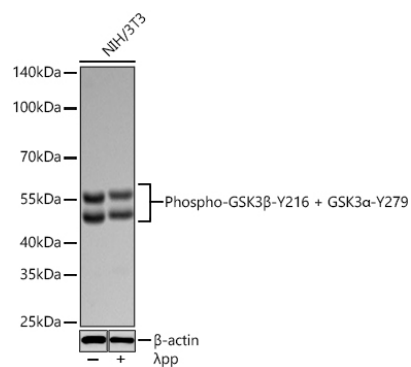
Affinity purification

Storage

Store at -20°C. Avoid freeze / thaw cycles.

Buffer: PBS with 0.09% Sodium azide, 0.05% BSA, 50% glycerol, pH7.3.

Validation Data



Western blot analysis of lysates from NIH/3T3 cells using Phospho-GSK3β-Y216 + GSK3α-Y279 Rabbit mAb (AP1530) at 1:1000 dilution incubated overnight at 4°C. NIH/3T3 cells were treated by λ-PP mixed solution (1μL) at 30°C for 30 minutes.

Secondary antibody: HRP-conjugated Goat anti-Rabbit IgG (H+L) (AS014) at 1:10000 dilution.

Lysates/proteins: 30 μg per lane.

Blocking buffer: 3 % nonfat dry milk in TBST.

Detection: ECL Basic Kit (RM00020).

Exposure time: 20s.