

Phospho-MLKL-S345 Rabbit mAb

Catalog No.: AP1550 **Recombinant**

Basic Information

Observed MW

55kDa

Calculated MW

54kDa

Category

Primary antibody

Applications

WB, IP, ELISA

Cross-Reactivity

Mouse

CloneNo number

ARC3328

Background

This gene belongs to the protein kinase superfamily. The encoded protein contains a protein kinase-like domain; however, is thought to lack protein kinase activity. This protein plays a critical role in tumor necrosis factor (TNF)-induced necroptosis, a programmed cell death process, via interaction with receptor-interacting protein 3 (Rip3), which is a key signaling molecule in necroptosis pathway. Knockout of this gene in mice showed that it is essential for necroptosis. Alternatively spliced transcript variants have been found for this gene.

Recommended Dilutions

WB 1:1000 - 1:6000**IP** 0.5µg-4µg antibody for
200µg-400µg extracts of
whole cells**ELISA** Recommended starting
concentration is 1 µg/mL.
Please optimize the
concentration based on
your specific assay
requirements.

Immunogen Information

Gene ID

74568

Swiss Prot

Q9D2Y4

Immunogen

Synthetic peptide. This information is considered to be commercially sensitive.

Synonyms

9130019I15Rik

Contact

 | 400-999-6126 | cn.market@abclonal.com.cn | www.abclonal.com.cn

Product Information

Source

Rabbit

Isotype

IgG

Purification

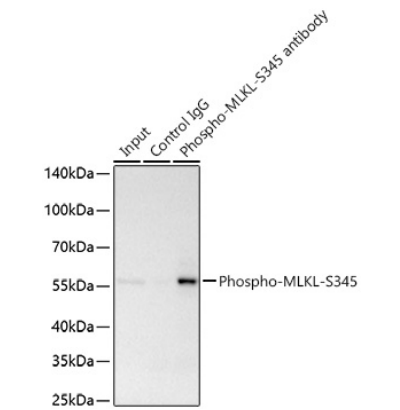
Affinity purification

Storage

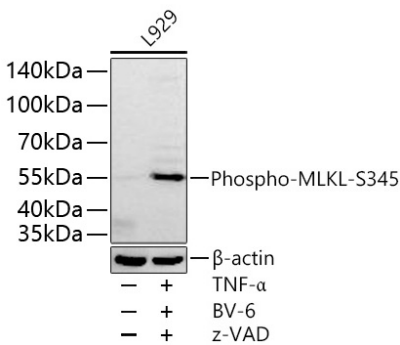
Store at -20°C. Avoid freeze / thaw cycles.

Buffer: PBS containing 50% glycerol and 0.05% BSA, preserved with proclin300 or sodium azide (as specified on the Certificate of Analysis), pH 7.3.

Validation Data



Immunoprecipitation of Phospho-MLKL-S345 from 200 µg extracts of L929 cells treated with TNF-α (20 ng/mL, 7h) and Z-VAD (20 µM, 7h) and BV-6 (100 nM, 7h) was performed using 1 µg of Phospho-MLKL-S345 Rabbit mAb(AP1550). Rabbit Control IgG (AC005) was used to precipitate the Control IgG sample. IP samples were eluted with 1x Laemmli Buffer. The Input lane represents 10% of the total input. Western blot analysis of immunoprecipitates was conducted using Phospho-MLKL-S345 Rabbit mAb(AP1550) at a dilution of 1:5000.



Western blot analysis of various lysates using Phospho-MLKL-S345 Rabbit mAb (AP1550) at 1:1000 dilution incubated overnight at 4°C. L929 cells were treated with TNF-α (20 ng/mL), Z-VAD (20 µM) and BV-6 (100 nM) at 37 °C for 7 hours. Secondary antibody: HRP-conjugated Goat anti-Rabbit IgG (H+L) (AS014) at 1:10000 dilution. Lysates/proteins: 30 µg per lane. Blocking buffer: 3% nonfat dry milk in TBST. Detection: ECL Basic Kit (RM00020). Exposure time: 45 s.