

Phospho-STING/TMEM173-S365 Rabbit mAb

Catalog No.: AP1580 **Recombinant** **2 Publications**

Basic Information

Observed MW

43 kDa

Calculated MW

43 kDa

Category

Primary antibody

Applications

WB, ELISA

Cross-Reactivity

Mouse

CloneNo number

ARC56941

Background

Enables 2',3'-cyclic GMP-AMP binding activity; cyclic-di-GMP binding activity; and ubiquitin protein ligase binding activity. Involved in several processes, including defense response to other organism; macroautophagy; and positive regulation of interferon-beta production. Acts upstream of or within cellular response to interferon-beta; positive regulation of transcription by RNA polymerase II; and regulation of inflammatory response. Located in several cellular components, including autophagosome; perinuclear region of cytoplasm; and peroxisome. Is expressed in ductus deferens; epididymis; ileum; and prostate gland. Human ortholog(s) of this gene implicated in STING-associated vasculopathy with onset in infancy. Orthologous to human STING1 (stimulator of interferon response cGAMP interactor 1).

Recommended Dilutions

WB 1:1000 - 1:5000

ELISA Recommended starting concentration is 1 µg/mL. Please optimize the concentration based on your specific assay requirements.

Immunogen Information

Gene ID

72512

Swiss Prot

Q3TBT3

Immunogen

Synthetic peptide. This information is considered to be commercially sensitive.

Synonyms

ERIS; MPYS; Mita; STING; Tmem173; STING-beta; 2610307O08Rik

Contact

☎ | 400-999-6126

✉ | cn.market@abclonal.com.cn

🌐 | www.abclonal.com.cn

Product Information

Source

Rabbit

Isotype

IgG

Purification

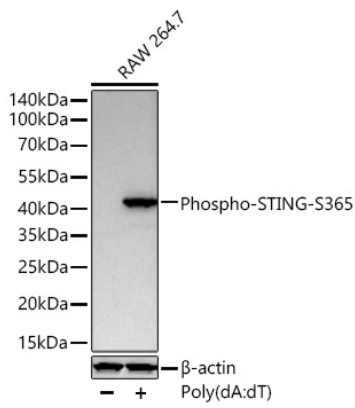
Affinity purification

Storage

Store at -20°C. Avoid freeze / thaw cycles.

Buffer: PBS with 0.09% Sodium azide, 0.05% BSA, 50% glycerol, pH7.3.

Validation Data



Western blot analysis of lysates from RAW 264.7 cells using Phospho-STING/TMEM173-S365 Rabbit mAb (AP1580) at 1:5000 dilution incubated overnight at 4°C. RAW 264.7 cells were treated with Poly(dA:dT) (5 µg/mL) at 37°C for 3 hours.
Secondary antibody: HRP-conjugated Goat anti-Rabbit IgG (H+L) (AS014) at 1:10000 dilution.
Lysates/proteins: 30 µg per lane.
Blocking buffer: 3% nonfat dry milk in TBST.
Detection: ECL Basic Kit (RM00020).
Exposure time: 60s.