

Phospho-PLN-S16 Rabbit mAb

Catalog No.: AP1595 **Recombinant**

Basic Information

Observed MW

12 kDa/24 kDa

Calculated MW

6 kDa

Category

Primary antibody

Applications

WB, IF-P, IHC-P, ELISA

Cross-Reactivity

Mouse, Rat

CloneNo number

ARC76756

Background

The protein encoded by this gene is found as a pentamer and is a major substrate for the cAMP-dependent protein kinase in cardiac muscle. The encoded protein is an inhibitor of cardiac muscle sarcoplasmic reticulum Ca(2+)-ATPase in the unphosphorylated state, but inhibition is relieved upon phosphorylation of the protein. The subsequent activation of the Ca(2+) pump leads to enhanced muscle relaxation rates, thereby contributing to the inotropic response elicited in heart by beta-agonists. The encoded protein is a key regulator of cardiac diastolic function. Mutations in this gene are a cause of inherited human dilated cardiomyopathy with refractory congestive heart failure, and also familial hypertrophic cardiomyopathy.

Recommended Dilutions

WB 1:5000 - 1:10000**IF-P** 1:200 - 1:800**IHC-P** 1:2000 - 1:8000

ELISA Recommended starting concentration is 1 µg/mL. Please optimize the concentration based on your specific assay requirements. For high-ratio antibody dilutions (≥1:10000) a sequential dilution method is strongly recommended to ensure measurement accuracy.

Immunogen Information

Gene ID

5350

Swiss Prot

P26678

Immunogen

Synthetic peptide. This information is considered to be commercially sensitive.

Synonyms

PLB; CMD1P; CMH18

Product Information

Source

Rabbit

Isotype

IgG

Purification

Affinity purification

Storage

Store at -20°C. Avoid freeze / thaw cycles.

Buffer: PBS with 0.09% Sodium azide, 0.05% BSA, 50% glycerol, pH7.3.

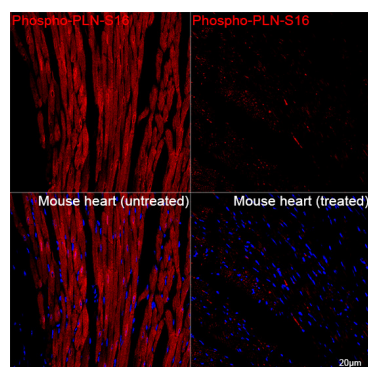
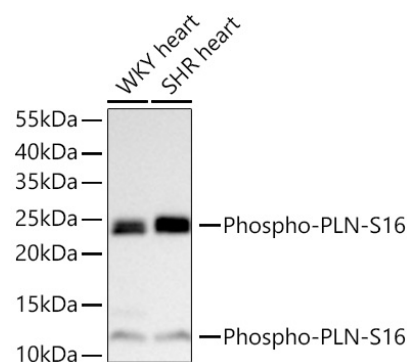
Contact

☎ | 400-999-6126

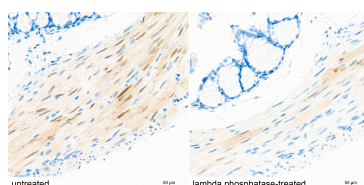
✉ | cn.market@abclonal.com.cn

🌐 | www.abclonal.com.cn

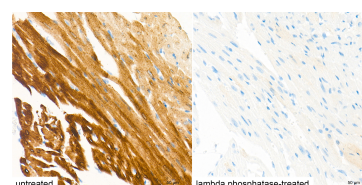
Validation Data



Confocal imaging of paraffin-embedded Mouse heart tissue (untreated) and Mouse heart tissue (treated with λ pp) using Phospho-PLN-S16 Rabbit mAb (AP1595, dilution 1:200) followed by a further incubation with Cy3-conjugated Goat Anti-Rabbit IgG (H+L) (AS007, dilution 1:500) (Red). DAPI was used for nuclear staining (Blue). High pressure antigen retrieval performed with 0.01M Citrate Buffer (pH 6.0) prior to IF staining. Objective: 40x.



Immunohistochemistry analysis of paraffin-embedded Mouse colon tissue, untreated (left) and lambda phosphatase-treated (right), using Phospho-PLN-S16 Rabbit mAb (AP1595) at a dilution of 1:6000 (40x lens). High pressure antigen retrieval performed with 0.01M Tris-EDTA Buffer (pH 9.0) prior to IHC staining.



Immunohistochemistry analysis of paraffin-embedded Mouse heart tissue, untreated (left) and lambda phosphatase-treated (right), using Phospho-PLN-S16 Rabbit mAb (AP1595) at a dilution of 1:6000 (40x lens). High pressure antigen retrieval performed with 0.01M Tris-EDTA Buffer (pH 9.0) prior to IHC staining.