

# Phospho- $\alpha$ -Synuclein-S129 Rabbit mAb

**Catalog No.: AP1623** Recombinant

## Basic Information

**Observed MW**

18 kDa

**Calculated MW**

11 kDa/13 kDa/14 kDa

**Category**

Primary antibody

**Applications**

WB,IF/ICC,ELISA

**Cross-Reactivity**

Human, Mouse

**CloneNo number**

ARC82414

## Background

Alpha-synuclein is a member of the synuclein family, which also includes beta- and gamma-synuclein. Synucleins are abundantly expressed in the brain and alpha- and beta-synuclein inhibit phospholipase D2 selectively. SNCA may serve to integrate presynaptic signaling and membrane trafficking. Defects in SNCA have been implicated in the pathogenesis of Parkinson disease. SNCA peptides are a major component of amyloid plaques in the brains of patients with Alzheimer's disease. Alternatively spliced transcripts encoding different isoforms have been identified for this gene.

## Recommended Dilutions

**WB** 1:2000 - 1:5000

**IF/ICC** 1:200-1:800

**ELISA** Recommended starting concentration is 1  $\mu$ g/mL. Please optimize the concentration based on your specific assay requirements. For high-ratio antibody dilutions ( $\geq 1:10000$ ) a sequential dilution method is strongly recommended to ensure measurement accuracy.

## Immunogen Information

**Gene ID**

6622

**Swiss Prot**

P37840

**Immunogen**

Synthetic peptide. This information is considered to be commercially sensitive.

**Synonyms**
PD1; NACP; PARK1; PARK4; Phospho- $\alpha$ -Synuclein-Y136

## Product Information

**Source**

Rabbit

**Isotype**

IgG

**Purification**

Affinity purification

**Storage**

Store at -20°C. Avoid freeze / thaw cycles.

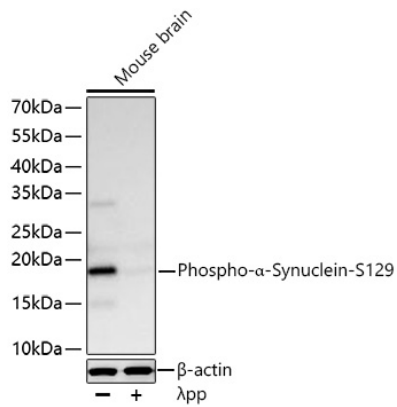
Buffer: PBS with 0.09% Sodium azide,0.05% BSA,50% glycerol,pH7.3.

## Contact

 | 400-999-6126

 | [cn.market@abclonal.com.cn](mailto:cn.market@abclonal.com.cn)
 | [www.abclonal.com.cn](http://www.abclonal.com.cn)

## Validation Data



Western blot analysis of lysates from Mouse brain using Phospho- $\alpha$ -Synuclein-S129 Rabbit mAb (AP1623) at 1:5000 dilution incubated overnight at 4°C. Mouse brain were treated with  $\lambda$ pp (100 U) at 30°C for 1 hour.

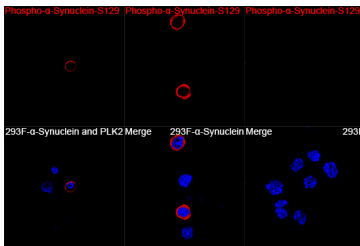
Secondary antibody: HRP-conjugated Goat anti-Rabbit IgG (H+L) (AS014) at 1:10000 dilution.

Lysates/proteins: 30  $\mu$ g per lane.

Blocking buffer: 3% nonfat dry milk in TBST.

Detection: ECL Basic Kit (RM00020).

Exposure time: 60 s.



Confocal imaging of 293F cells transfected with  $\alpha$ -Synuclein and PLK2 and 293F cells transfected with  $\alpha$ -Synuclein using Phospho- $\alpha$ -Synuclein-S129 Rabbit mAb (AP1623, dilution 1:200) followed by a further incubation with Cy3-conjugated Goat anti-Rabbit IgG (H+L) (AS007, dilution 1:500) (Red). DAPI was used for nuclear staining (Blue). Objective: 100x.