

Phospho-IRF3-S386 Rabbit mAb

Catalog No.: AP1638 **Recombinant**

Basic Information

Observed MW

55 kDa

Calculated MW

12 kDa/17 kDa/33 kDa/47 kDa/49 kDa

Category

Primary antibody

Applications

WB,ELISA

Cross-Reactivity

Human

CloneNo number

ARC3839

Background

This gene encodes a member of the interferon regulatory transcription factor (IRF) family. The encoded protein is found in an inactive cytoplasmic form that upon serine/threonine phosphorylation forms a complex with CREBBP. This complex translocates to the nucleus and activates the transcription of interferons alpha and beta, as well as other interferon-induced genes. The protein plays an important role in the innate immune response against DNA and RNA viruses. Mutations in this gene are associated with Encephalopathy, acute, infection-induced, herpes-specific, 7.

Recommended Dilutions

WB 1:2000 - 1:5000

ELISA Recommended starting concentration is 1 µg/mL. Please optimize the concentration based on your specific assay requirements. For high-ratio antibody dilutions ($\geq 1:10000$) a sequential dilution method is strongly recommended to ensure measurement accuracy.

Contact

☎ | 400-999-6126

✉ | cn.market@abclonal.com.cn

🌐 | www.abclonal.com.cn

Immunogen Information

Gene ID

3661

Swiss Prot

Q14653

Immunogen

This information is considered to be commercially sensitive.

Synonyms

IIEA7; Phospho-IRF3-S386

Product Information

Source

Rabbit

Isotype

IgG

Purification

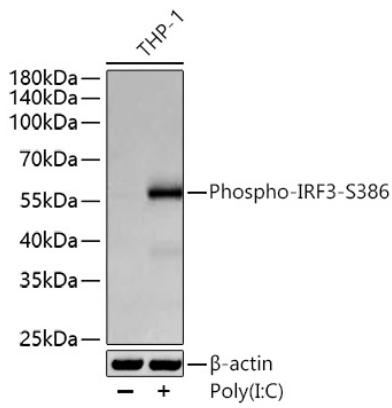
Affinity purification

Storage

Store at -20°C. Avoid freeze / thaw cycles.

Buffer: PBS with 0.09% sodium azide,0.05% BSA,50% glycerol,pH7.3

Validation Data



Western blot analysis of lysates from THP-1 cells using Phospho-IRF3-S386 Rabbit mAb (AP1638) at 1:5000 dilution incubated overnight at 4°C. THP-1 cells were treated with Poly(I:C)(2.5 µg/mL) at 37°C for 6 hours.

Secondary antibody: HRP-conjugated Goat anti-Rabbit IgG (H+L) (AS014) at 1:10000 dilution.

Lysates/proteins: 30 µg per lane.

Blocking buffer: 3% nonfat dry milk in TBST.

Detection: ECL Basic Kit (RM00020).

Exposure time: 45 s.