

FITC Goat Anti-Rabbit IgG (H+L)

Catalog No	AS011	Category	Secondary Antibodies
Applications	IF, FC	Observed MW	
Cross-Reactivity		Calculated MW	

Immunogen Information

Immunogen	Rabbit IgG
Gene ID	
Swiss Prot	
Synonyms	

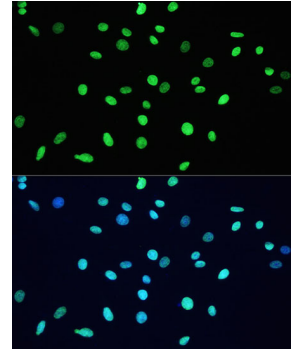
Product information

Source	Goat
Isotype	Fluorescein conjugated IgG
Purity	Affinity purification
Storage	Store at -20°C. Avoid freeze / thaw cycles. Buffer: 50% glycerol, pH7.3.

Background

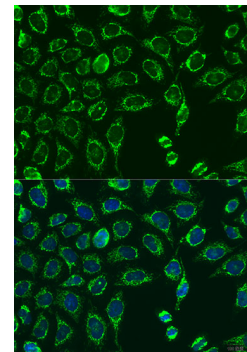
Recommended Dilutions

IF	1:20 - 1:100
FC	1:20 - 1:100



Immunofluorescence analysis of C6 cells, using Acetyl-DNMT1-K1127/K1129/K1131/K1133 antibody (A5595) as the primary antibody at dilution of 1:100. The cells were incubated with the primary antibody overnight at 4°C.

Secondary antibody: FITC Goat Anti-Rabbit IgG (H+L) (AS011).
Blue: DAPI for nuclear staining.



Immunofluorescence analysis of U-2OS cells, using MATN3 antibody (A15072) as the primary antibody at dilution of 1:100. The cells were incubated with the primary antibody overnight at 4°C.

Secondary antibody: FITC Goat Anti-Rabbit IgG (H+L) (AS011).
Blue: DAPI for nuclear staining.