

HRP-conjugated Rabbit anti-Chicken IgY (IgG) (H+L)

Catalog No.: AS030

4 Publications

Basic Information

Observed MW

22-30kDa(Light chain),60-70kDa(Heavy chain)/30kDa(Light chain),70kDa(Heavy chain)

Calculated MW

Category

Secondary antibody

Applications

WB,IHC-P,ELISA

Cross-Reactivity

Conjugate

HRP

Background

Secondary antibodies are affinity-purified antibodies which will work with target-specific primary antibody in the detection, sorting or purification of its specified target. Secondary antibodies offer increased versatility enabling users to use many detection systems (e.g. HRP, AP, fluorescence). They can also provide greater sensitivity through signal amplification as multiple secondary antibodies. Most commonly, secondary antibodies are generated by immunizing the host animal (different from host species of primary antibody) with a pooled population of normal immunoglobulins from the host species of primary antibody and can be further purified and modified (i.e. antibody fragmentation, label conjugation, etc.) to ensure well-characterized specificity to corresponding normal immunoglobulins.

Recommended Dilutions

WB	1:10000 - 1:50000
IHC-P	1:500 - 1:5000
ELISA	1:10000 - 1:200000

Immunogen Information

Gene ID

Swiss Prot

Immunogen

This information is considered to be commercially sensitive.

Synonyms

Contact

☎	400-999-6126
✉	cn.market@abclonal.com.cn
🌐	www.abclonal.com.cn

Product Information

Source

Rabbit

Isotype

Horseradish peroxidase
conjugated IgG

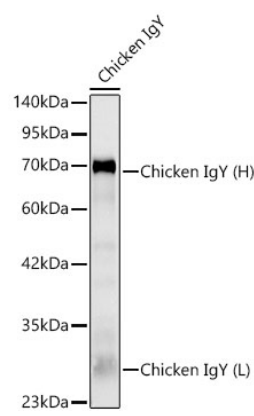
Purification

Affinity purification

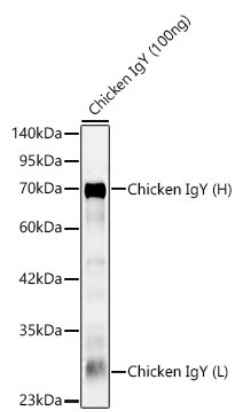
Storage

Store at -20°C. Avoid freeze / thaw cycles.
Buffer: PBS with 0.75% BSA,50% glycerol,pH7.3.

Validation Data



Western blot analysis of lysates from Chicken IgY using HRP Rabbit Anti-Chicken IgY (IgG) (H+L) (AS030) at 1:5000 dilution.
Lysates/proteins: 50ng - 100ng per lane.
Blocking buffer: 3% nonfat dry milk in TBST.
Detection: ECL Basic Kit (RM00020).
Exposure time: 30s.



Western blot analysis of lysates from Chicken IgY using HRP Rabbit Anti-Chicken IgY (IgG) (H+L) (AS030) at 1:5000 dilution.
Lysates/proteins: 100ng per lane.
Blocking buffer: 3% nonfat dry milk in TBST.
Detection: ECL Basic Kit (RM00020).
Exposure time: 30s.