

HRP-conjugated Mouse anti-Rabbit IgG Light Chain

Catalog No.: AS061 **59 Publications**

Basic Information

Observed MW

25kDa(Light chain)

Calculated MW

Category

Secondary antibody

Applications

WB,IP

Cross-Reactivity

CloneNo number

AMC0531

Conjugate

HRP

Background

Secondary antibodies are affinity-purified antibodies which will work with target-specific primary antibody in the detection, sorting or purification of its specified target. Secondary antibodies offer increased versatility enabling users to use many detection systems (e.g. HRP, AP, fluorescence). They can also provide greater sensitivity through signal amplification as multiple secondary antibodies. Most commonly, secondary antibodies are generated by immunizing the host animal (different from host species of primary antibody) with a pooled population of normal immunoglobulins from the host species of primary antibody and can be further purified and modified (i.e. antibody fragmentation, label conjugation, etc.) to ensure well-characterized specificity to corresponding normal immunoglobulins.

Recommended Dilutions

WB 1:5000 - 1:10000

Immunogen Information

Gene ID

Swiss Prot

Immunogen

Rabbit IgG

Synonyms

Contact

☎ | 400-999-6126

✉ | cn.market@abclonal.com.cn

🌐 | www.abclonal.com.cn

Product Information

Source

Mouse

Isotype

IgG1,Kappa

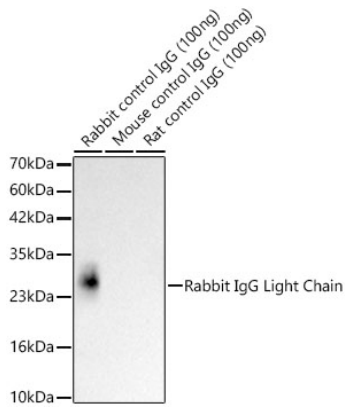
Purification

Affinity purification

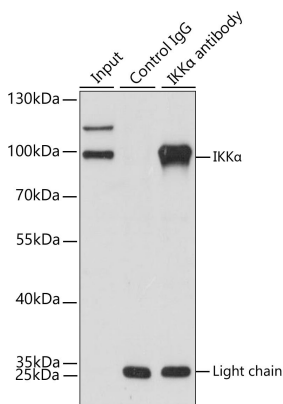
Storage

Store at -20°C. Avoid freeze / thaw cycles.
Buffer: PBS with 0.75% BSA,50% glycerol,pH7.3.

Validation Data



Western blot analysis of recombinant Rabbit/Mouse/Rat control IgG Protein using HRP-conjugated Mouse Anti-Rabbit IgG Light Chain (AS061) at 1:10000 dilution.
Secondary antibody: HRP Goat Anti-Mouse IgG (H+L)(AS003) at 1:10000 dilution.
Lysates/proteins: 100 ng per lane.
Blocking buffer: 3% nonfat dry milk in TBST.
Detection: ECL Basic Kit (RM00020).
Exposure time: 90s.



Immunoprecipitation analysis of 200 μ g extracts of 293T cells using 3 μ g IKK α antibody (A2062). Western blot was performed from the immunoprecipitate using IKK α antibody (A2062) at a dilution of 1:1000.
Secondary antibody: HRP-conjugated AffiniPure Mouse Anti-Rabbit IgG Light Chain (AS061) at 1:20000 dilution.