

HRP-conjugated Goat anti-Mouse IgG Light Chain

Catalog No.: AS062 **25 Publications**

Basic Information

Observed MW

Calculated MW

Category

Secondary antibody

Applications

WB

Cross-Reactivity

Mouse

Conjugate

HRP

Background

Secondary antibodies are affinity-purified antibodies which will work with target-specific primary antibody in the detection, sorting or purification of its specified target. Secondary antibodies offer increased versatility enabling users to use many detection systems (e.g. HRP, AP, fluorescence). They can also provide greater sensitivity through signal amplification as multiple secondary antibodies. Most commonly, secondary antibodies are generated by immunizing the host animal (different from host species of primary antibody) with a pooled population of normal immunoglobulins from the host species of primary antibody and can be further purified and modified (i.e. antibody fragmentation, label conjugation, etc.) to ensure well-characterized specificity to corresponding normal immunoglobulins.

Recommended Dilutions

WB 1:1000 - 1:5000

Immunogen Information

Gene ID

Swiss Prot

Immunogen

Mouse IgG

Synonyms

Contact

☎ | 400-999-6126

✉ | cn.market@abclonal.com.cn

🌐 | www.abclonal.com.cn

Product Information

Source

Goat

Isotype

IgG

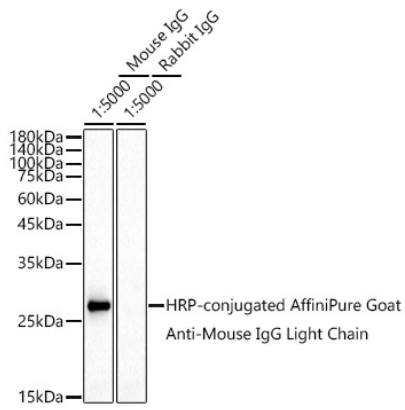
Purification

Affinity purification

Storage

Store at -20°C. Avoid freeze / thaw cycles.
Buffer: PBS with 50% glycerol, pH7.3.

Validation Data



Western blot analysis of lysates from mouse IgG, using HRP-conjugated Goat Anti-Mouse IgG Light Chain (AS062) at 1:5000 dilution.
Lysates/proteins: 100ng per lane.
Blocking buffer: 3% nonfat dry milk in TBST.
Detection: ECL Enhanced Kit (RM00021).
Exposure time: 90s.