

ABflo® 647-conjugated Goat anti-Rabbit IgG (H+L)

Catalog No.: AS075

Basic Information

Observed MW

Calculated MW

Category

Secondary antibody

Applications

IF/ICC,FC

Cross-Reactivity

Conjugate

ABflo® 647. Ex:648nm. Em:664nm.

Background

Secondary antibodies are affinity-purified antibodies which will work with target-specific primary antibody in the detection, sorting or purification of its specified target. Secondary antibodies offer increased versatility enabling users to use many detection systems (e.g. HRP, AP, fluorescence). They can also provide greater sensitivity through signal amplification as multiple secondary antibodies. Most commonly, secondary antibodies are generated by immunizing the host animal (different from host species of primary antibody) with a pooled population of normal immunoglobulins from the host species of primary antibody and can be further purified and modified (i.e. antibody fragmentation, label conjugation, etc.) to ensure well-characterized specificity to corresponding normal immunoglobulins.

Recommended Dilutions

IF/ICC 1:100 - 1:800

FC 1:100 - 1:800

Immunogen Information

Gene ID


Swiss Prot

Immunogen

Rabbit IgG

Synonyms

Contact

 | 400-999-6126 | cn.market@abclonal.com.cn | www.abclonal.com.cn

Product Information

Source

Goat

Isotype

IgG

Purification

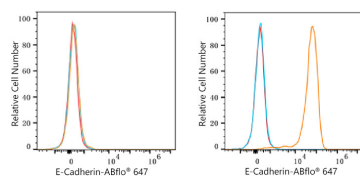
Affinity purification

Storage

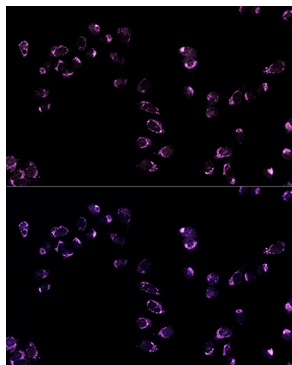
Store at -20°C. Avoid freeze / thaw cycles.

Buffer: PBS with 0.025% Sodium Azide,0.75% BSA,50% glycerol,pH7.3.

Validation Data



Flow cytometry: 1×10^6 K-562 cells (negative control, left) and A-431 cells (right) were surface-stained with Purified Rabbit anti-Human E-Cadherin mAb (5 μ l/Test, orange line) or secondary antibody only (blue line). Non-fluorescently stained K-562 and A-431 cells were used as blank control (red line). ABflo® 647-conjugated Goat Anti-Rabbit IgG (H+L) Ab (AS075, 1:800) was used as a secondary antibody.



Immunofluorescence analysis of U2OS cells using ABflo® 647-conjugated AffiniPure Goat Anti-Rabbit IgG (H+L) (AS075) at dilution of 1:200. Secondary antibody: Cy3 Goat Anti-Rabbit IgG (H+L) (AS007) at 1:500 dilution. Blue: DAPI for nuclear staining.