

HRP-conjugated Mouse anti-Rabbit IgG (H+L)

Catalog No.: AS079

3 Publications

Basic Information

Observed MW

36kDa

Calculated MW**Category**

Secondary antibody

Applications

WB

Cross-Reactivity**Conjugate**

HRP

Background

Secondary antibodies are affinity-purified antibodies which will work with target-specific primary antibody in the detection, sorting or purification of its specified target. Secondary antibodies offer increased versatility enabling users to use many detection systems (e.g. HRP, AP, fluorescence). They can also provide greater sensitivity through signal amplification as multiple secondary antibodies. Most commonly, secondary antibodies are generated by immunizing the host animal (different from host species of primary antibody) with a pooled population of normal immunoglobulins from the host species of primary antibody and can be further purified and modified (i.e. antibody fragmentation, label conjugation, etc.) to ensure well-characterized specificity to corresponding normal immunoglobulins.

Recommended Dilutions

WB 1:5000 - 1:20000

Immunogen Information

Gene ID**Swiss Prot****Immunogen**

This information is considered to be commercially sensitive.

Synonyms

Contact

 | 400-999-6126 | cn.market@abclonal.com.cn | www.abclonal.com.cn

Product Information

Source

Mouse

Isotype

IgG

Purification

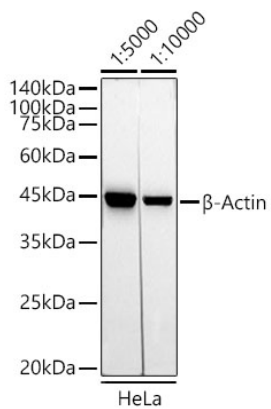
Affinity purification

Storage

Store at -20°C. Avoid freeze / thaw cycles.

Buffer: PBS with 0.75% BSA, 50% glycerol, pH7.3.

Validation Data



Western blot analysis of lysates from HeLa cells, using β -Actin (AC026) antibody as the primary antibody at dilution of 1:10000.

Secondary antibody: using HRP-conjugated AffiniPure Mouse Anti-Rabbit IgG (H+L) antibody (AS079)) at 1:5000-1:10000 dilution.