

Goat Anti-Human IgG (H+L)

Catalog No.: AS084

Basic Information

Observed MW

25kDa(Light chain),55kDa(Heavy chain)

Calculated MW

Category

Secondary antibody

Applications

WB

Cross-Reactivity

Human

Background

Secondary antibodies are affinity-purified antibodies which will work with target-specific primary antibody in the detection, sorting or purification of its specified target. Secondary antibodies offer increased versatility enabling users to use many detection systems (e.g. HRP, AP, fluorescence). They can also provide greater sensitivity through signal amplification as multiple secondary antibodies. Most commonly, secondary antibodies are generated by immunizing the host animal (different from host species of primary antibody) with a pooled population of normal immunoglobulins from the host species of primary antibody and can be further purified and modified (i.e. antibody fragmentation, label conjugation, etc.) to ensure well-characterized specificity to corresponding normal immunoglobulins.

Recommended Dilutions

WB 1:500 - 1:1000

Immunogen Information

Gene ID

Swiss Prot

Immunogen

Human IgG

Synonyms

Contact

☎ | 400-999-6126

✉ | cn.market@abclonal.com.cn

🌐 | www.abclonal.com.cn

Product Information

Source

Goat

Isotype

IgG

Purification

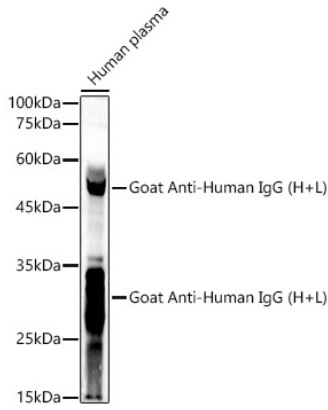
Affinity purification

Storage

Store at -20°C. Avoid freeze / thaw cycles.

Buffer: PBS with 0.09% Sodium azide,50% glycerol,pH7.3.

Validation Data



Western blot analysis of lysates from Human plasma, using Goat Anti-Human IgG (H+L) (AS084) at 1:1000 dilution.

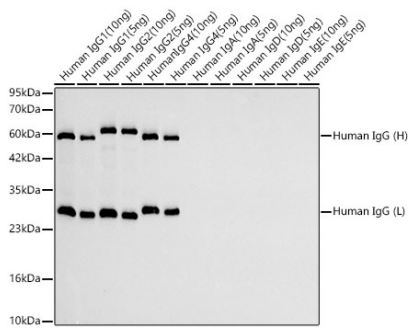
Secondary antibody: HRP Donkey Anti-Goat IgG (H+L) (AS031) at 1:4000 dilution.

Lysates/proteins: 25µg per lane.

Blocking buffer: 3% nonfat dry milk in TBST.

Detection: ECL Basic Kit (RM00020).

Exposure time: 10s.



Western blot analysis of lysates from Human IgG using Goat Anti-Human IgG (H+L) (AS002) at 1:5000 dilution.

Lysates/proteins: 5ng - 10ng per lane.

Blocking buffer: 3% nonfat dry milk in TBST.

Detection: ECL Basic Kit (RM00020).

Exposure time: 10s.