

# HRP conjugated Rabbit-Mouse IgM (Fc) mAb

Catalog No.: AS094

## Basic Information

### Observed MW

55kDa

### Calculated MW

### Category

Secondary antibody

### Applications

WB

### Cross-Reactivity

### Conjugate

HRP

## Background

Secondary antibodies are affinity-purified antibodies which will work with target-specific primary antibody in the detection, sorting or purification of its specified target. Secondary antibodies offer increased versatility enabling users to use many detection systems (e.g. HRP, AP, fluorescence). They can also provide greater sensitivity through signal amplification as multiple secondary antibodies. Most commonly, secondary antibodies are generated by immunizing the host animal (different from host species of primary antibody) with a pooled population of normal immunoglobulins from the host species of primary antibody and can be further purified and modified (i.e. antibody fragmentation, label conjugation, etc.) to ensure well-characterized specificity to corresponding normal immunoglobulins.

## Recommended Dilutions

WB 1:10000 - 1:50000

## Immunogen Information

### Gene ID

### Swiss Prot

### Immunogen

Mouse IgM

### Synonyms

## Contact

☎ | 400-999-6126

✉ | [cn.market@abclonal.com.cn](mailto:cn.market@abclonal.com.cn)

🌐 | [www.abclonal.com.cn](http://www.abclonal.com.cn)

## Product Information

### Source

Rabbit

### Isotype

### Purification

Affinity purification

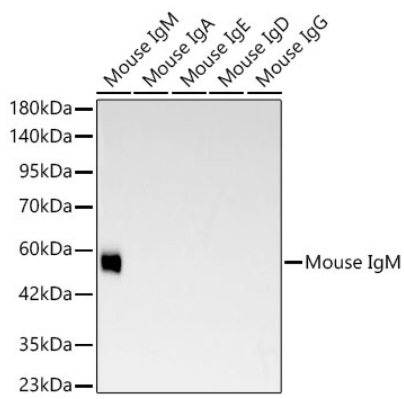
### Storage

Store at -20°C. Avoid freeze / thaw cycles.

Buffer: PBS with 50%glycerol□0.2%BSA□0.03%Proclin300□Negative IgG□pH7.3.

## Validation Data

---



Western blot analysis of lysates from Mouse IgM using HRP Rabbit anti-Mouse IgM mAb (AS094) at 1:50000 dilution.  
Lysates/proteins: 50ng per lane.  
Blocking buffer: 3% nonfat dry milk in TBST.  
Detection: ECL Basic Kit (RM00020).  
Exposure time: 45s.