

# HRP-conjugated Rabbit anti-Human IgD mAb

Catalog No.: AS095

## Basic Information

**Observed MW**

**Calculated MW**

**Category**

Secondary antibody

**Applications**

ELISA

**Cross-Reactivity**

Human

**CloneNo number**

ARC60051-HRP

**Conjugate**

HRP

## Background

## Recommended Dilutions

**ELISA** 1:5000-1:10000

## Immunogen Information

**Gene ID**

**Swiss Prot**

P01880

**Immunogen**

This information is considered to be commercially sensitive.

**Synonyms**

## Contact

 | 400-999-6126

 | [cn.market@abclonal.com.cn](mailto:cn.market@abclonal.com.cn)

 | [www.abclonal.com.cn](http://www.abclonal.com.cn)

## Product Information

**Source**

Rabbit

**Isotype**

IgG

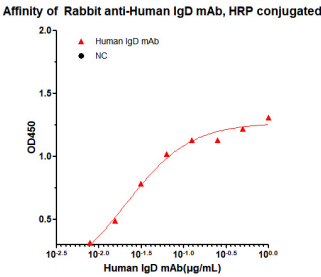
**Purification**

Affinity purification

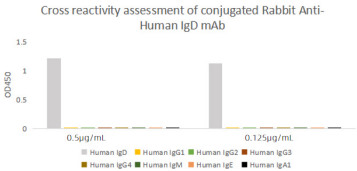
**Storage**

Store at -20°C. Avoid freeze / thaw cycles.

Buffer: PBS containing 50% glycerol and 0.05% BSA, preserved with proclin300 or sodium azide (as specified on the Certificate of Analysis), pH 7.3.



Dose response curve of HRP conjugated Rabbit Anti-Human IgD mAb measured by ELISA. 25 ng of Human IgD recombinant protein was coated in 384-well plate, blank wells without protein were used as negative control (NC). The coated plate was blocked and subsequently incubated with 25 µL of HRP conjugated Rabbit Anti-Human IgD mAb in a 2 fold serial dilution from 1 µg/mL to 7.8 pg/mL, incubation was performed at room temperature for 1 hour. EC50 value ( $2.10 \times 10^{-2}$  µg/mL) were calculated using 4 parameter logistic regression.



Cross reactivity to various IgGs of HRP conjugated Rabbit Anti-Human IgD mAb was examined ELISA. 1 µg/mL of various immunoglobulins were coated to 384-well plate. Then the plate was blocked and incubated with 25 µL of HRP conjugated Rabbit Anti-Human IgD mAb, 0.5 µg/mL and 0.125 µg/mL at room temperature for 1 hour. The ELISA result demonstrated that Rabbit anti-Human IgD antibody has highly specific recognition of Human IgD, while no or minimal cross reactivity to Human IgG1, Human IgG2, Human IgG3, Human IgG4, Human IgM, Human IgE and Human IgA1.