

HRP-conjugated Rabbit anti-Goat IgG Fc mAb

Catalog No.: AS096

Basic Information

Observed MW

Calculated MW

Category

Secondary antibody

Applications

WB,(ELISA)

Cross-Reactivity

Goat

CloneNo number

ARC56943-HRP

Conjugate

HRP

Background

Recommended Dilutions

WB 1:500-1:64000

ELISA 1:5000-1:10000

Immunogen Information

Gene ID

Swiss Prot

Immunogen

Synonyms

Contact

☎ | 400-999-6126

✉ | cn.market@abclonal.com.cn

🌐 | www.abclonal.com.cn

Product Information

Source

Rabbit

Isotype

IgG

Purification

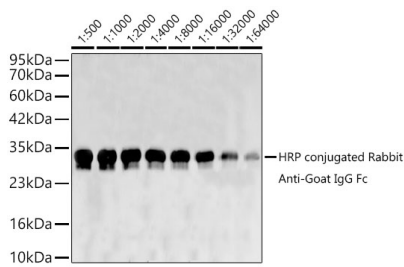
Affinity purification

Storage

Store at -20°C. Avoid freeze / thaw cycles.

Buffer: PBS with 0.05% proclin300,0.05% BSA,50% glycerol,pH7.3.

Validation Data

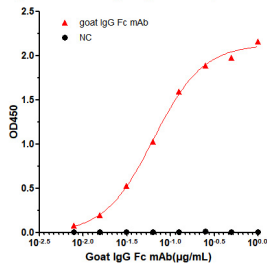


Western blot analysis of recombinant goat IgG Fc Protein using HRP-conjugated Rabbit anti-Goat IgG Fc mAb(AS096) at 1:500-1:64000 dilution. Blot was incubated with HRP conjugated antibody in the Blocking buffer (3% nonfat dry milk in TBST) at room temperature for 1 hour before detection using Enhanced chemiluminescence.

Lysates/proteins: Lane 1: molecular weight marker; Lanes 2-9: 100ng goat IgG Fc recombinant Protein per lane.

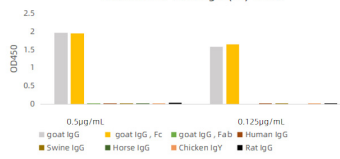
Detection: ECL Basic Kit (RM00020).
Exposure time: 15s.

Affinity of Rabbit anti-goat IgG Fc mAb, HRP conjugated



Dose response curve of HRP conjugated Rabbit Anti-Goat IgG Fc mAb measured by ELISA. 25 ng of Goat IgG Fc recombinant protein was coated in 384-well plate, blank wells without protein were used as negative control (NC). The coated plate was blocked and subsequently incubated with 25 µL of HRP conjugated Rabbit Anti-Goat IgG Fc mAb in a 2 fold serial dilution from 1 µg/mL to 7.8 pg/mL, incubation was performed at room temperature for 1 hour. EC50 value (6.38×10^{-2} µg/mL) were calculated using 4 parameter logistic regression.

Cross reactivity assessment of HRP conjugated Rabbit Anti-Goat IgG (Fc) mAb



Cross reactivity to various IgGs of HRP conjugated Rabbit Anti-Goat IgG Fc mAb was examined ELISA. 1 µg/mL of various immunoglobulins were coated to 384-well plate. Then the plate was blocked and incubated with 25 µL of HRP conjugated Rabbit Anti-Goat IgG Fc mAb, 0.5 µg/mL and 0.125 µg/mL at room temperature for 1 hour. The ELISA result demonstrated that Rabbit anti-goat Fc antibody has highly specific recognition of goat IgG (H+L) and Fc fragments, while no or minimal cross reactivity to goat IgG Fab, Human IgG, Swine IgG, Horse IgG, Chicken IgY, and Rat IgG.