

HRP-conjugated Rabbit anti-Human IgG4 mAb

Catalog No.: AS102

Basic Information

Observed MW

Calculated MW

Category

Secondary antibody

Applications

ELISA

Cross-Reactivity

Human

CloneNo number

ARC60037-02-HRP

Conjugate

HRP

Background

Recommended Dilutions

ELISA 1:5000-1:10000

Immunogen Information

Gene ID

Swiss Prot

P01861

Immunogen

Synonyms

Contact

 | 400-999-6126

 | cn.market@abclonal.com.cn

 | www.abclonal.com.cn

Product Information

Source

Rabbit

Isotype

IgG

Purification

Affinity purification

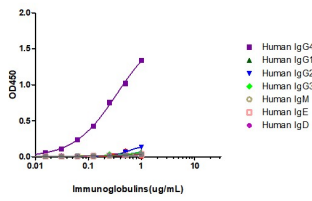
Storage

Store at -20°C. Avoid freeze / thaw cycles.

Buffer: PBS with 0.05% proclin300,0.05% BSA,50% glycerol,pH7.3.

Validation Data

Affinity of Rabbit Anti-Human IgG4 mAb, HRP conjugated



Dose response curve of HRP conjugated Rabbit Anti-Human IgG4 mAb measured by ELISA. 1 $\mu\text{g}/\text{mL}$ of various immunoglobulins were coated to 384-well plate., blank wells without protein were used as negative control (NC). The coated plate was blocked and subsequently incubated with 25 μL of HRP conjugated Rabbit Anti-Human IgG4 mAb in a 2 fold serial dilution from 1 $\mu\text{g}/\text{mL}$ to 7.8×10^{-3} $\mu\text{g}/\text{mL}$, incubation was performed at room temperature for 1 hour. The ELISA result demonstrated that Rabbit Anti-Human IgG4 has highly specific recognition of Human IgG4 while no or minimal cross reactivity to Human IgG1, Human IgG2, Human IgG3, Human IgM, Human IgE, Human IgD.