

# HRP-conjugated Rabbit anti-Human IgE mAb

Catalog No.: AS104

2 Publications

## Basic Information

**Observed MW**

**Calculated MW**

**Category**

Secondary antibody

**Applications**

ELISA

**Cross-Reactivity**

Human

**CloneNo number**

ARC60062-HRP

**Conjugate**

HRP

## Background

## Recommended Dilutions

**ELISA** 1:5000-1:10000

## Immunogen Information

**Gene ID**

**Swiss Prot**

P01854

**Immunogen**

This information is considered to be commercially sensitive.

**Synonyms**

## Contact

 | 400-999-6126

 | [cn.market@abclonal.com.cn](mailto:cn.market@abclonal.com.cn)

 | [www.abclonal.com.cn](http://www.abclonal.com.cn)

## Product Information

**Source**

Rabbit

**Isotype**

IgG

**Purification**

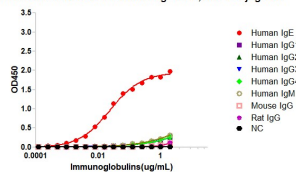
Affinity purification

**Storage**

Store at -20°C. Avoid freeze / thaw cycles.

Buffer: PBS containing 50% glycerol and 0.05% BSA, preserved with proclin300 or sodium azide (as specified on the Certificate of Analysis), pH 7.3.

Affinity of Rabbit anti Rabbit Anti-Human IgE mAb, HRP conjugated



Dose response curve of HRP conjugated Rabbit Anti-Human IgE (Fc) mAb measured by ELISA. 1  $\mu\text{g/mL}$  of various immunoglobulins were coated to 384-well plate., blank wells without protein were used as negative control (NC). The coated plate was blocked and subsequently incubated with 25  $\mu\text{L}$  of HRP conjugated Rabbit Anti-Human IgE (Fc) mAb in a 2 fold serial dilution from 2  $\mu\text{g/mL}$  to  $6.1 \times 10^{-5}$   $\mu\text{g/mL}$ , incubation was performed at room temperature for 1 hour. The ELISA result demonstrated that Rabbit Anti-Human IgE (Fc) mAb has highly specific recognition of Human IgE while no or minimal cross reactivity to Human IgG1 Human IgG2 Human IgG3 Human IgG4 Human IgM Mouse IgG Rat IgG.