

# HRP conjugated Rabbit Anti-Monkey IgA mAb

Catalog No.: AS116

## Basic Information

### Observed MW

Refer to figures

### Calculated MW

### Category

Secondary antibody

### Applications

ELISA

### Cross-Reactivity

Cynomolgus monkey

### CloneNo number

ARC59910-02-HRP

### Conjugate

HRP

## Background

Secondary antibodies are affinity-purified antibodies which will work with target-specific primary antibody in the detection, sorting or purification of its specified target. Secondary antibodies offer increased versatility enabling users to use many detection systems (e.g. HRP, AP, fluorescence). They can also provide greater sensitivity through signal amplification as multiple secondary antibodies. Most commonly, secondary antibodies are generated by immunizing the host animal (different from host species of primary antibody) with a pooled population of normal immunoglobulins from the host species of primary antibody and can be further purified and modified (i.e. antibody fragmentation, label conjugation, etc.) to ensure well-characterized specificity to corresponding normal immunoglobulins.

## Recommended Dilutions

ELISA 1:5000 -1:10000

## Immunogen Information

Gene ID

Swiss Prot

Immunogen

Monkey IgA

Synonyms

## Contact

☎ | 400-999-6126

✉ | [cn.market@abclonal.com.cn](mailto:cn.market@abclonal.com.cn)

🌐 | [www.abclonal.com.cn](http://www.abclonal.com.cn)

## Product Information

Source

Rabbit

Isotype

IgA

Purification

Affinity purification

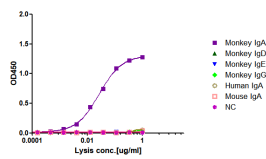
Storage

Store at -20°C. Avoid freeze / thaw cycles.

Buffer: PBS with 0.05% proclin300,0.05% BSA,50% glycerol,pH7.3.

## Validation Data

Affinity of Rabbit anti Rabbit Anti-Monkey IgA mAb, HRP conjugated



Dose response curve of HRP conjugated Monkey IgA mAb measured by ELISA. 1 µg/mL of various immunoglobulins were coated to 384-well plate., blank wells without protein were used as negative control (NC). The coated plate was blocked and subsequently incubated with 25 µL of HRP conjugated Rabbit Anti-Monkey IgA mAb in a 3 fold serial dilution from 1 µg/mL to  $6.97 \times 10^{-2}$  µg/mL, incubation was performed at room temperature for 1 hour. The ELISA result demonstrated that Rabbit anti-Monkey IgA mAb has highly specific recognition of Monkey IgA while no or minimal cross reactivity to Monkey IgD, Monkey IgE, Monkey IgG3, Human IgA, Mouse IgA.