

HRP conjugated Mouse anti-Rabbit IgG Heavy Chain mAb

Catalog No.: AS122

Basic Information

Observed MW

55kDa//55kDa

Calculated MW

55kDa

Category

Secondary antibody

Applications

WB, ELISA

Cross-Reactivity

CloneNo number

AMC50001-HRP

Conjugate

HRP

Recommended Dilutions

WB 1:5000-1:20000

ELISA 1:5000-1:10000

Background

Secondary antibodies are affinity-purified antibodies which will work with target-specific primary antibody in the detection, sorting or purification of its specified target. Secondary antibodies offer increased versatility enabling users to use many detection systems (e.g. HRP, AP, fluorescence). They can also provide greater sensitivity through signal amplification as multiple secondary antibodies. Most commonly, secondary antibodies are generated by immunizing the host animal (different from host species of primary antibody) with a pooled population of normal immunoglobulins from the host species of primary antibody and can be further purified and modified (i.e. antibody fragmentation, label conjugation, etc.) to ensure well-characterized specificity to corresponding normal immunoglobulins.

Immunogen Information

Gene ID

Swiss Prot

P01870

Immunogen

Recombinant protein (or fragment). This information is considered to be commercially sensitive.

Synonyms

Contact

☎ | 400-999-6126

✉ | cn.market@abclonal.com.cn

🌐 | www.abclonal.com.cn

Product Information

Source

Mouse

Isotype

mouse IgG1

Purification

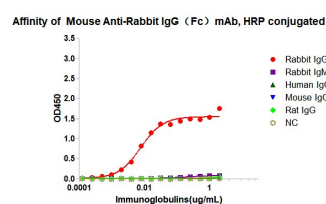
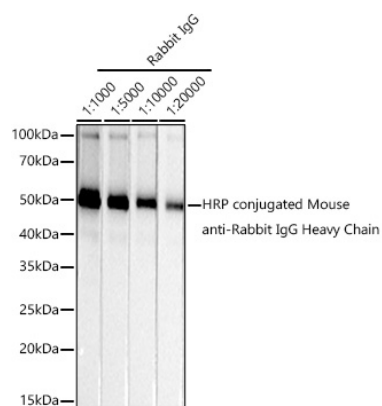
Affinity purification

Storage

Store at -20°C. Avoid freeze / thaw cycles.

Buffer: PBS containing 50% glycerol, preserved with proclin300 or sodium azide (as specified on the Certificate of Analysis), pH 7.3.

Validation Data



Dose response curve of HRP conjugated Mouse Anti-Rabbit IgG (Fc) mAb measured by ELISA. 1 µg/mL of various immunoglobulins were coated to 384-well plate. blank wells without protein were used as negative control (NC). The coated plate was blocked and subsequently incubated with 25 µL of HRP conjugated Mouse Anti-Rabbit IgG (Fc) mAb in a 2 fold serial dilution from 2 µg/mL to 1.22*10⁻⁴ pg/mL, incubation was performed at room temperature for 1 hour. The ELISA result demonstrated that Mouse Anti-Rabbit IgG (Fc) mAb has highly specific recognition of Rabbit IgG while no or minimal cross reactivity to Rabbit IgM, Human IgG, Mouse IgG, Rat IgG.