

Rabbit Anti-Mouse IgG2b (Fc) mAb

Catalog No.: AS128

Basic Information

Observed MW

55kDa

Calculated MW

60kDa

Category

Secondary antibody

Applications

WB,FC,ELISA

Cross-Reactivity

Mouse

CloneNo number

ARC67783

Background

Antigen binding activity, upstream or within phagocytosis, positive regulation of immune response and positive regulation of phagocytosis. Located in the extracellular space. Partial immunoglobulin complex, circulation. It is derived from several human genes, including IGHG1(immunoglobulin heavy constant γ 1 (G1m marker)); igg2(immunoglobulin heavy constant γ 2 (G2m marker)); And IGHG3(immunoglobulin heavy constant γ 3 (G3m marker)).

Recommended Dilutions

WB 1:1000 - 1:5000

FC 1:500 - 1:1000

ELISA Recommended starting concentration is 1 μ g/mL. Please optimize the concentration based on your specific assay requirements.

Immunogen Information

Gene ID

16016

Swiss Prot

P01867-2

Immunogen

A synthetic peptide corresponding to a sequence within amino acids 14-113 of mouse IgG2b (P01867-2).

Synonyms

IgG2b; Igh-3; gamma2b;

Contact

☎ | 400-999-6126

✉ | cn.market@abclonal.com.cn

🌐 | www.abclonal.com.cn

Product Information

Source

Rabbit

Isotype

IgG

Purification

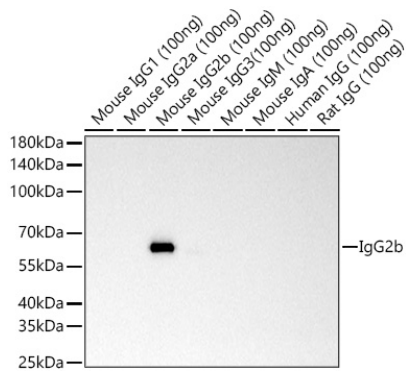
Affinity purification

Storage

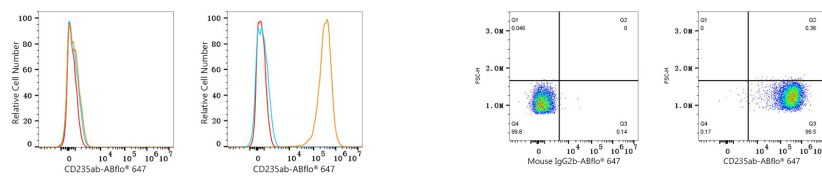
Store at -20°C. Avoid freeze / thaw cycles.

Buffer: PBS with 0.09% Sodium azide,0.05% BSA,50% glycerol,pH7.3.

Validation Data



Western blot analysis of lysates from Mouse IgG2b using Rabbit Anti-Mouse IgG2b (Fc) mAb (AS128) at 1:1000 dilution incubated overnight at 4°C. Lysates/proteins: 100ng µg per lane. Blocking buffer: 3% nonfat dry milk in TBST. Detection: ECL Basic Kit (RM00020). Negative control (NC): Mouse IgG1, Mouse IgG2a, Mouse IgG3, Mouse IgM, Mouse IgA, Human IgG, Rat IgG. Exposure time: 1s.



Flow cytometry: 1×10^6 Jurkat cells (negative control, left) and HEL cells (right) were surface-stained with Mouse anti-Human CD235ab mAb (IgG2b, κ , orange line) or Mouse IgG2b isotype control (2 µg/mL, blue line), followed by Rabbit Anti-Mouse IgG2b (Fc) mAb (AS128, 2 µg/mL) and Alexa Fluor® 647 conjugated goat anti-rabbit pAb staining. Non-fluorescently stained cells were used as blank control (red line).

Flow cytometry: 1×10^6 HEL cells were surface-stained with Mouse IgG2b isotype control (2 µg/mL, left) or Mouse anti-Human CD235ab mAb (IgG2b, κ , right). Rabbit Anti-Mouse IgG2b (Fc) mAb (AS128, 2 µg/mL) and Alexa Fluor® 647 conjugated goat anti-rabbit pAb was used as a secondary antibody.