

PE Rabbit anti-Rat IgG mAb

Catalog No.: AS145

Basic Information

Observed MW

Calculated MW

52kDa

Category

Secondary antibody

Applications

FC

Cross-Reactivity

Rat

CloneNo number

ARC70680

Conjugate

PE. Ex:565nm. Em:574nm.

Recommended Dilutions

FC 5 μ l per 10^6 cells in
100 μ l volume

Background

Predicted to enable antigen binding activity and immunoglobulin receptor binding activity. Predicted to act upstream of or within several processes, including antibody-dependent cellular cytotoxicity; phagocytosis; and positive regulation of immune response. Predicted to be located in external side of plasma membrane and extracellular space. Predicted to be part of immunoglobulin complex, circulating. Orthologous to human IGHG1 (immunoglobulin heavy constant gamma 1 (G1m marker)).

Immunogen Information

Gene ID

299354

Swiss Prot

Q569B4

Immunogen

Recombinant protein (or fragment). This information is considered to be commercially sensitive.

Synonyms

Ighg; RGD1359539

Contact

 | 400-999-6126

 | cn.market@abclonal.com.cn

 | www.abclonal.com.cn

Product Information

Source

Rabbit

Isotype

IgG

Purification

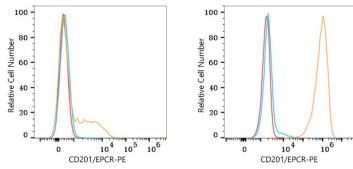
Affinity purification

Storage

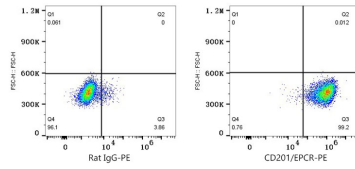
Store at 2-8°C. Avoid freeze.

Buffer: PBS with 0.09% Sodium azide, 0.2% BSA, pH7.3.

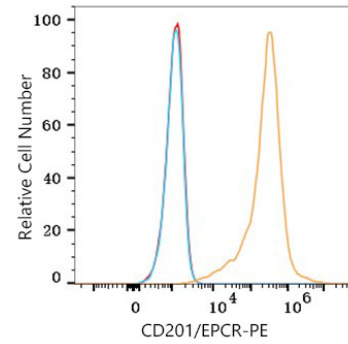
Validation Data



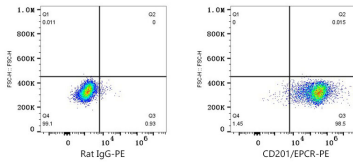
Flow cytometry: 1×10^6 Jurkat cells (negative control, left) and HUVEC cells (right) were surface-stained with Rat anti-human CD201 (EPCR) (2 $\mu\text{g}/\text{mL}$, orange line) or Rat IgG isotype control (2 $\mu\text{g}/\text{mL}$, blue line), followed by PE Rabbit anti-Rat IgG mAb (AS145,5 $\mu\text{l}/\text{Test}$) staining. Non-fluorescently stained cells were used as blank control (red line).



Flow cytometry: 1×10^6 HUVEC cells were surface-stained with Rat IgG isotype control (2 $\mu\text{g}/\text{mL}$, left) or Rat anti-human CD201 (EPCR) (2 $\mu\text{g}/\text{mL}$, right), followed by PE Rabbit anti-Rat IgG mAb (AS145,5 $\mu\text{l}/\text{Test}$) staining.



Flow cytometry: 1×10^6 A549 cells were surface-stained with Rat anti-human CD201 (EPCR) (2 $\mu\text{g}/\text{mL}$, orange line) or Rat IgG isotype control (2 $\mu\text{g}/\text{mL}$, blue line), followed by PE Rabbit anti-Rat IgG mAb (AS145,5 $\mu\text{l}/\text{Test}$) staining. Non-fluorescently stained cells were used as blank control (red line).



Flow cytometry: 1×10^6 A549 cells were surface-stained with Rat IgG isotype control (2 $\mu\text{g}/\text{mL}$, left) or Rat anti-human CD201 (EPCR) (2 $\mu\text{g}/\text{mL}$, right), followed by PE Rabbit anti-Rat IgG mAb (AS145,5 $\mu\text{l}/\text{Test}$) staining.