

# Rabbit anti-Mouse IgG2a (Fc) mAb

Catalog No.: AS148

## Basic Information

### Observed MW

55kDa

### Calculated MW

36kDa

### Category

Secondary antibody

### Applications

WB,ELISA

### Cross-Reactivity

Mouse

### CloneNo number

ARC67091

## Background

## Recommended Dilutions

**WB** 1:18000 - 1:180000

**ELISA** Recommended starting concentration is 1 µg/mL. Please optimize the concentration based on your specific assay requirements.

## Immunogen Information

### Gene ID

/

### Swiss Prot

P01863

### Immunogen

A synthetic peptide corresponding to a sequence within amino acids 1-109 of mouse IgG2a (P01863).

### Synonyms

## Contact

☎ | 400-999-6126

✉ | [cn.market@abclonal.com.cn](mailto:cn.market@abclonal.com.cn)

🌐 | [www.abclonal.com.cn](http://www.abclonal.com.cn)

## Product Information

### Source

Rabbit

### Isotype

IgG

### Purification

Affinity purification

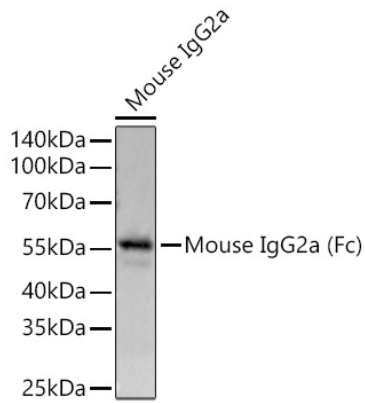
### Storage

Store at -20°C. Avoid freeze / thaw cycles.

Buffer: PBS with 0.09% Sodium azide,0.05% BSA,50% glycerol,pH7.3.

## Validation Data

---



Western blot analysis of lysates from Mouse IgG2a using Rabbit anti-Mouse IgG2a (Fc) mAb (AS148) at 1:18000 dilution incubated overnight at 4°C.  
Secondary antibody: HRP-conjugated Goat anti-Mouse IgG (H+L) (AS003) at 1:10000 dilution.  
Lysates/proteins: 10ng µg per lane.  
Blocking buffer: 3% nonfat dry milk in TBST.  
Detection: ECL Basic Kit (RM00020).  
Exposure time: 0.3s.