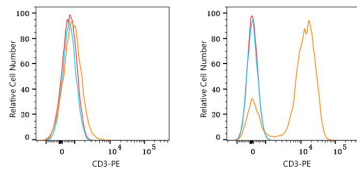
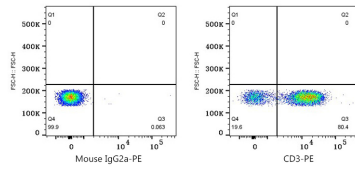


Validation Data



Flow cytometry: 1×10^6 Raji cells (negative control, left) and Human PBMC (right) were surface-stained with Mouse anti Human CD3 mAb ($2 \mu\text{g/mL}$, orange line) or Mouse IgG2a isotype control ($2 \mu\text{g/mL}$, blue line), followed by PE Rabbit anti-Mouse IgG2a (Fc) mAb ($AS149,5 \mu\text{l/Test}$) staining. Non-fluorescently stained cells were used as blank control (red line).



Flow cytometry: 1×10^6 Human PBMC were surface-stained with Mouse IgG2a isotype control ($2 \mu\text{g/mL}$, left) or Mouse anti Human CD3 mAb ($2 \mu\text{g/mL}$, right). PE Rabbit anti-Mouse IgG2a (Fc) mAb ($AS149,5 \mu\text{l/Test}$) was used as a secondary antibody.