

# ABflo® 647 Rabbit anti-Mouse IgG (Fc) mAb

Catalog No.: AS156

## Basic Information

---

### Observed MW

### Calculated MW

36kDa

### Category

Secondary antibody

### Applications

FC

### Cross-Reactivity

Mouse

### CloneNo number

ARC68493-ABflo647

### Conjugate

ABflo® 647. Ex:648nm. Em:664nm.

## Recommended Dilutions

---

FC 5 µl per 10<sup>6</sup> cells in  
100 µl volume

## Background

---

## Immunogen Information

---

### Gene ID

/

### Swiss Prot

P01868

### Immunogen

Recombinant fusion protein containing a sequence corresponding to amino acids 98-324 of mouse IgG (P01868).

### Synonyms

## Contact

---

☎ | 400-999-6126

✉ | [cn.market@abclonal.com.cn](mailto:cn.market@abclonal.com.cn)

🌐 | [www.abclonal.com.cn](http://www.abclonal.com.cn)

## Product Information

---

### Source

Rabbit

### Isotype

IgG

### Purification

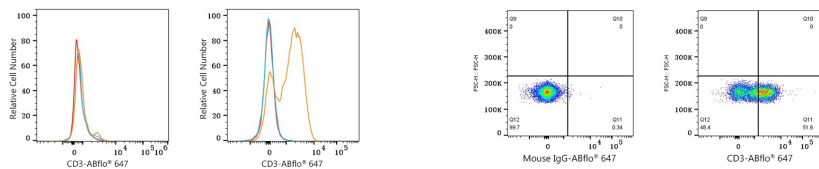
Affinity purification

### Storage

Store at 2-8°C. Avoid freeze.

Buffer: PBS with 0.09% Sodium azide,0.2% BSA,pH7.3.

## Validation Data



Flow cytometry:  $1 \times 10^6$  Raji cells (negative control, left) and Human PBMC (right) were surface-stained with Mouse anti Human CD3 mAb ( $2 \mu\text{g/mL}$ , orange line) or Mouse IgG isotype control ( $2 \mu\text{g/mL}$ , blue line), followed by ABflo® 647 Rabbit anti-Mouse IgG (Fc) mAb ( $AS156,5 \mu\text{l/Test}$ ) staining. Non-fluorescently stained cells were used as blank control (red line).

Flow cytometry:  $1 \times 10^6$  Human PBMC were surface-stained with Mouse IgG isotype control ( $2 \mu\text{g/mL}$ , left) or Mouse anti Human CD3 mAb ( $2 \mu\text{g/mL}$ , right). ABflo® 647 Rabbit anti-Mouse IgG (Fc) mAb ( $AS156,5 \mu\text{l/Test}$ ) was used as a secondary antibody.