

# Rabbit anti Swine IgA (Fc specific) pAb

**Catalog No.: AS157**

## Basic Information

**Observed MW**

55-60kDa

**Calculated MW**

37kDa

**Category**

Secondary antibody

**Applications**

WB, ELISA

**Cross-Reactivity**

Sus scrofa

## Background

The reactivity of the antiserum is restricted to the Fc part of the IgA molecule. In immunoelectrophoresis and radial immunodiffusion, using various antiserum concentrations against normal swine serum and milk, a single precipitin line is obtained which shows a reaction of identity with the precipitin line obtained with purified IgA. No precipitation reaction is obtained with purified IgG, IgM, and IgG/Fab fragments. In precipitating techniques as immunoelectrophoresis and radial immunodiffusion (Ouchterlony and Mancini) to identify the presence of IgA in swine serum and other body fluids or to determine its concentration. To prepare an immunoadsorbent for the purification of swine IgA from serum or plasma. Antisera to IgA do not discriminate between serum IgA (monomeric and dimeric) and higher molecular forms such as secretory IgA. This antiserum is not intended for use in non-precipitating antibody-binding or other highly sensitive assays. For such uses labelled and unlabelled cytochemical and immunoassay grade reagents meeting the necessary additional specificity and performance requirements are available.

## Recommended Dilutions

**WB** 1:3000 - 1:18000**ELISA** Recommended starting concentration is 1 µg/mL. Please optimize the concentration based on your specific assay requirements.

## Immunogen Information

**Gene ID****Swiss Prot**

K7ZRK0

**Immunogen**

Recombinant protein (or fragment). This information is considered to be commercially sensitive.

**Synonyms**

IGHA; IgA heavy chain constant region

## Contact

 | 400-999-6126 | [cn.market@abclonal.com.cn](mailto:cn.market@abclonal.com.cn) | [www.abclonal.com.cn](http://www.abclonal.com.cn)

## Product Information

**Source**

Rabbit

**Isotype**

IgG

**Purification**

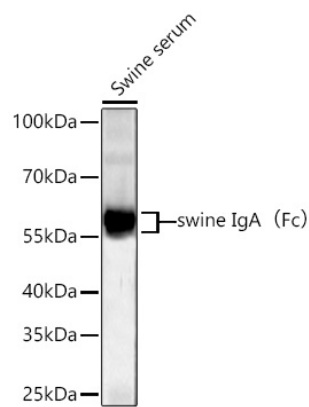
Affinity purification

**Storage**

Store at -20°C. Avoid freeze / thaw cycles.

Buffer: PBS with 0.09% Sodium azide, 50% glycerol, pH 7.3.

# Validation Data



Western blot analysis of lysates from Swine serum using Swine IgA[Fc]Rabbit pAb (AS157) at 1:3000 dilution incubated overnight at 4°C.  
Secondary antibody: HRP-conjugated Goat anti-Rabbit IgG (H+L) (AS014) at 1:10000 dilution.  
Lysates/proteins: 25 µg per lane.  
Blocking buffer: 3% nonfat dry milk in TBST.  
Detection: ECL Basic Kit (RM00020).  
Exposure time: 10s.