

HRP-conjugated Rabbit-Human IgE(Fc) PolymAb®

Catalog No.: AS161PM

Basic Information

Observed MW

155kDa

Calculated MW

47kDa

Category

Secondary antibody

Applications

WB, ELISA

Cross-Reactivity

Human

Conjugate

HRP

Background

IgE is the class of antibodies produced in the lungs, skin, and mucous membranes. It may protect against parasite invasion, but it is a major factor in allergic reactions. The antigen-specific IgE interacts with mast cells and eosinophils, triggers the release of histamine, leukotrienes and other substances that lead to the itching, sneezing and congestion of allergies - and the life threatening respiratory distress of asthma and anaphylactic shock

Recommended Dilutions

WB 1:80000 - 1:170000

ELISA 1:5000-1:10000

Immunogen Information

Gene ID

Swiss Prot

P01854

Immunogen

Recombinant protein (or fragment). This information is considered to be commercially sensitive.

Synonyms

Igh2; IGHE; IGHEP1; Human IgE

Contact

☎ | 400-999-6126

✉ | cn.market@abclonal.com.cn

🌐 | www.abclonal.com.cn

Product Information

Source

Rabbit

Isotype

IgG

Purification

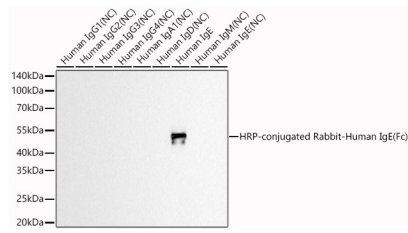
Affinity purification

Storage

Store at -20°C. Avoid freeze / thaw cycles.

Buffer: PBS containing 50% glycerol and 0.05% BSA, preserved with proclin300 or sodium azide (as specified on the Certificate of Analysis), pH 7.3.

Validation Data



Western blot analysis of various lysates using HRP-conjugated Rabbit-Human IgE(Fc) PolymAb® (AS161PM) at 1:170000 dilution incubated overnight at 4°C.

Lysates/proteins: 10ng µg per lane.

Blocking buffer: 3% nonfat dry milk in TBST.

Detection: ECL Basic Kit (RM00020).

Negative control (NC): Human IgG1, Human IgG2, Human IgG3, Human IgG4, Human IgA1, Human IgD, Human IgM, Human IgE

Exposure time: 90s.