

# APC/Cyanine7 Rabbit anti-Mouse IgM mAb

Catalog No.: AS176

## Basic Information

### Observed MW

### Calculated MW

50kDa

### Category

Secondary antibody

### Applications

FC

### Cross-Reactivity

Mouse

### CloneNo number

ARC58894

### Conjugate

APC-Cy7. Ex:651nm. Em:779nm.

## Recommended Dilutions

FC 5  $\mu$ l per  $10^6$  cells in  
100  $\mu$ l volume

## Background

Enables several functions, including antigen binding activity; identical protein binding activity; and immunoglobulin receptor binding activity. Acts upstream of or within several processes, including early endosome to late endosome transport; immunoglobulin mediated immune response; and positive regulation of B cell proliferation. Located in external side of plasma membrane; extracellular space; and perinuclear region of cytoplasm. Part of B cell receptor complex and immunoglobulin complex, circulating. Is expressed in several structures, including brain; hemolymphoid system; and liver. Used to study non-Hodgkin lymphoma and type 1 diabetes mellitus. Human ortholog(s) of this gene implicated in agammaglobulinemia. Orthologous to human IGHM (immunoglobulin heavy constant mu).

## Immunogen Information

### Gene ID

16019

### Swiss Prot

P01872

### Immunogen

Recombinant protein (or fragment). This information is considered to be commercially sensitive.

### Synonyms

Igm; muH; Igh6; Igh-6; Igh-M

## Contact

☎ | 400-999-6126

✉ | [cn.market@abclonal.com.cn](mailto:cn.market@abclonal.com.cn)

🌐 | [www.abclonal.com.cn](http://www.abclonal.com.cn)

## Product Information

### Source

Rabbit

### Isotype

IgG

### Purification

Affinity purification

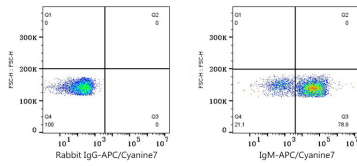
### Storage

Store at 2-8°C. Avoid freeze.

Buffer: PBS with 0.09% Sodium azide, 0.2% BSA, pH7.3.

## Validation Data

---



Flow cytometry:  $1 \times 10^6$  C57BL/6 mouse splenocytes were surface-stained with APC/Cyanine7 Rabbit IgG isotype control (5  $\mu$ l/Test, left) or APC/Cyanine7 Rabbit anti-Mouse IgM mAb (AS176, 5  $\mu$ l/Test, right).