

# PE Streptavidin

Catalog No.: AT0003

## Basic Information

---

### Observed MW

### Calculated MW

### Category

Primary antibody

### Applications

FC

### Cross-Reactivity

Species independent

### CloneNo number

Streptavidin-PE

### Conjugate

PE. Ex:565nm. Em:574nm.

## Background

---

Streptavidin binds to biotin with high affinity. Streptavidin-ABflo® 488 is useful for detecting biotinylated antibodies.

## Recommended Dilutions

---

FC 5 µl per 10<sup>6</sup> cells in  
100 µl volume

## Immunogen Information

---

### Gene ID

Swiss Prot

### Immunogen

### Synonyms

SA V1; SA V2

## Contact

---

☎ | 400-999-6126

✉ | [cn.market@abclonal.com.cn](mailto:cn.market@abclonal.com.cn)

🌐 | [www.abclonal.com.cn](http://www.abclonal.com.cn)

## Product Information

---

### Source

Isotype

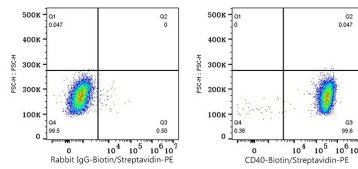
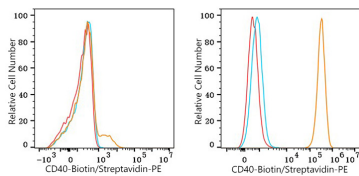
Purification

### Storage

Store at 2-8°C. Avoid freeze.

Buffer: PBS with 0.03% proclin300,0.2% BSA,pH7.3.

## Validation Data



Flow cytometry:  $1 \times 10^6$  Jurkat cells (negative control, left) and U-2 OS cells (right) were surface-stained with Biotin Rabbit anti-Human CD40 mAb (A25703, 2  $\mu\text{g/mL}$ , orange line) or Biotin Rabbit IgG isotype control (A25626, 2  $\mu\text{g/mL}$ , blue line), followed by PE Streptavidin (AT0003, 5  $\mu\text{l/Test}$ ) staining. Non-fluorescently stained cells were used as blank control (red line).

Flow cytometry:  $1 \times 10^6$  U-2 OS cells were surface-stained with Biotin Rabbit IgG isotype control (A25626, 2  $\mu\text{g/mL}$ , blue line) or Biotin Rabbit anti-Human CD40 mAb (A25703, 2  $\mu\text{g/mL}$ , right), followed by PE Streptavidin (AT0003, 5  $\mu\text{l/Test}$ ) staining.