

PE Streptavidin

Catalog No.: AT0009

Basic Information

Observed MW

Calculated MW

Category

Primary antibody

Applications

FC

Cross-Reactivity

Species independent

CloneNo number

SA110102701

Conjugate

PE. Ex:565nm. Em:574nm.

Background

Streptavidin binds to biotin with high affinity. Streptavidin-APC is useful for detecting biotinylated antibodies.

Recommended Dilutions

FC ≤0.25 µg per million cells
 in 100 µl volume

Immunogen Information

Gene ID

Swiss Prot

Immunogen

This information is considered to be commercially sensitive.

Synonyms

SA V1; SA V2

Contact

☎ | 400-999-6126

✉ | cn.market@abclonal.com.cn

🌐 | www.abclonal.com.cn

Product Information

Source

Rabbit

Isotype

Purification

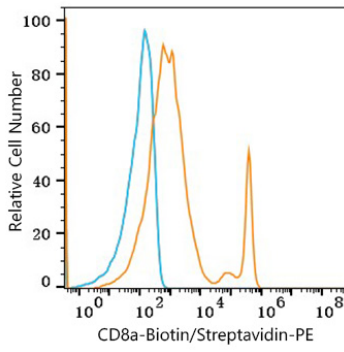
Affinity purification

Storage

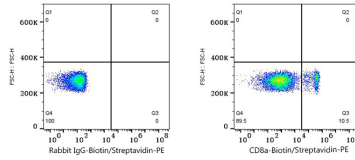
Store at 2-8°C. Avoid freeze.

Buffer: PBS with 0.09% Sodium azide,0.2% BSA,pH7.3.

Validation Data



Flow cytometry: 1×10^6 C57BL/6 mouse splenocytes were surface-stained with Biotin Rabbit anti-Mouse CD8a mAb (A27373, 5 μ l/Test, orange line) or Biotin Rabbit IgG isotype control (A25626, 5 μ l/Test, blue line), followed by PE Streptavidin (AT0009, 0.25 μ g) staining. Non-fluorescently stained cells were used as blank control (red line).



Flow cytometry: 1×10^6 C57BL/6 mouse splenocytes were surface-stained with Biotin Rabbit IgG isotype control (5 μ l/Test, left) or Biotin Rabbit anti-Mouse CD8a mAb (A27373, 5 μ l/Test, right), followed by PE Streptavidin (AT0009, 0.25 μ g) staining.