

# Phospho-EGFR-Y1045 Antibody kit

**Catalog No.: RK04080**

## Basic Information

**Observed MW**

180kDa

**Calculated MW**

134kDa

**Category**

Primary antibody

## Recommended Dilutions

**AP0819 WB** 1:500 - 1:2000**A11351 WB** 1:1000 - 1:5000For more information please visit  
[www.abclonal.com](http://www.abclonal.com)


## Product Information

**Source** Rabbit  
**Isotype** IgG**Purification**

Affinity purification

**Storage**Store at -20°C. Avoid freeze / thaw cycles.  
Buffer: PBS with 0.01% thimerosal, 50% glycerol, pH7.3.

## Contact

 | 400-999-6126 | [cn.market@abclonal.com.cn](mailto:cn.market@abclonal.com.cn) | [www.abclonal.com.cn](http://www.abclonal.com.cn)

## Background

The protein encoded by this gene is a transmembrane glycoprotein that is a member of the protein kinase superfamily. This protein is a receptor for members of the epidermal growth factor family. EGFR is a cell surface protein that binds to epidermal growth factor, thus inducing receptor dimerization and tyrosine autophosphorylation leading to cell proliferation. Mutations in this gene are associated with lung cancer. EGFR is a component of the cytokine storm which contributes to a severe form of Coronavirus Disease 2019 (COVID-19) resulting from infection with severe acute respiratory syndrome coronavirus-2 (SARS-CoV-2).

## Component

Catalog No.	Product Name	Applications	Cross-Reactivity
AP0819	Phospho-EGFR-Y1045 Rabbit pAb	ELISA, WB	Human
A11351	EGFR Rabbit pAb	ELISA, WB, IHC-P, IF/ICC, IP	Human, Mouse, Rat

## Immunogen Information

**Gene ID**

1956

**Swiss Prot**

P00533

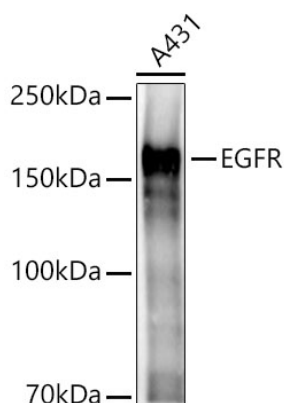
**Immunogen**

A synthetic phosphorylated peptide around Y1045 of human EGFR (NP\_005219.2).  
Recombinant fusion protein containing a sequence corresponding to amino acids 1021-1210 of human EGFR (NP\_005219.2).

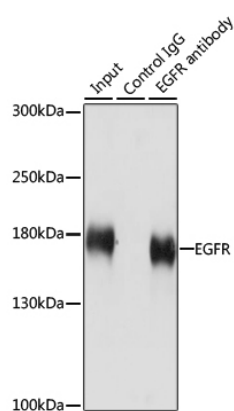
**Synonyms**

EGFR;ERBB;ERBB1;HER1;NISBD2;PIG61;mENA

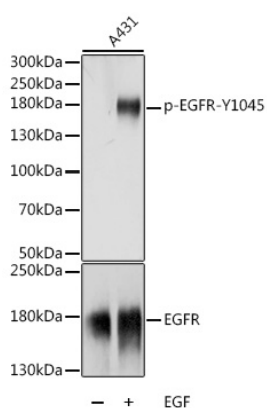
## Validation Data



Western blot analysis of lysates from A431 cells, using EGFR Rabbit pAb (A11351) at 1:2000 dilution.  
 Secondary antibody: HRP Goat Anti-Rabbit IgG (H+L) (AS014) at 1:10000 dilution.  
 Lysates/proteins: 25ug per lane.  
 Blocking buffer: 3% nonfat dry milk in TBST.  
 Detection: ECL Basic Kit (RM00020).  
 Exposure time: 3s.

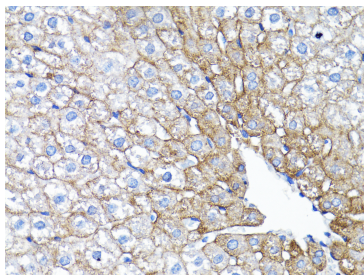


Immunoprecipitation analysis of 200 µg extracts of HeLa cells using 3 µg EGFR antibody (A11351).  
 Western blot was performed from the immunoprecipitate using EGFR antibody (A11351) at a dilution of 1:1000.

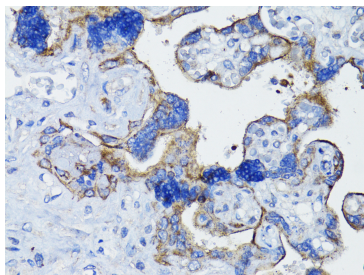


Western blot analysis of lysates from A-431 cells, using Phospho-EGFR-Y1045 Rabbit pAb (AP0819) at 1:1000 dilution or EGFR antibody (A11351). A-431 cells were treated by EGF (100 ng/mL) at 37°C for 30 minutes after serum-starvation overnight.  
 Secondary antibody: HRP Goat Anti-Rabbit IgG (H+L) (AS014) at 1:10000 dilution.  
 Lysates/proteins: 25µg per lane.  
 Blocking buffer: 3% BSA.  
 Detection: ECL Basic Kit (RM00020).  
 Exposure time: 1s.

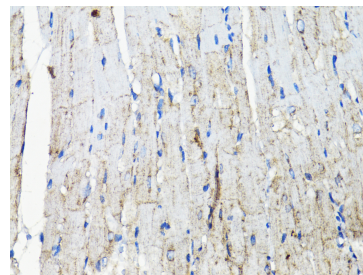
## Validation Data



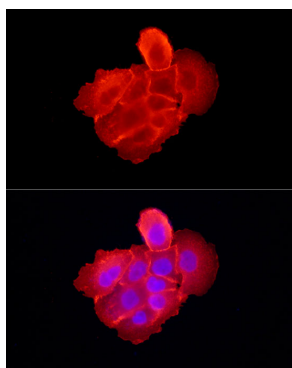
Immunohistochemistry analysis of EGFR in paraffin-embedded Rat liver using EGFR Rabbit pAb (A11351) at dilution of 1:200 (40x lens). Perform microwave antigen retrieval with 10 mM PBS buffer pH 7.2 before commencing with IHC staining protocol.



Immunohistochemistry analysis of EGFR in paraffin-embedded Human placenta using EGFR Rabbit pAb (A11351) at dilution of 1:200 (40x lens). Perform microwave antigen retrieval with 10 mM PBS buffer pH 7.2 before commencing with IHC staining protocol.



Immunohistochemistry analysis of EGFR in paraffin-embedded Mouse heart using EGFR Rabbit pAb (A11351) at dilution of 1:200 (40x lens). Perform microwave antigen retrieval with 10 mM PBS buffer pH 7.2 before commencing with IHC staining protocol.



Immunofluorescence analysis of A-431 cells using EGFR Rabbit pAb (A11351) at dilution of 1:300 (40x lens). Secondary antibody: Cy3 Goat Anti-Rabbit IgG (H+L) (AS007) at 1:500 dilution. Blue: DAPI for nuclear staining.