

Phospho-RPS6-S240/244 Antibody kit

Catalog No.: RK04081

Basic Information

Observed MW

36kDa

Calculated MW

29kDa

Category

Primary antibody

Recommended Dilutions

AP0537 WB 1:500 - 1:2000**A6058 WB** 1:500 - 1:1000For more information please visit
www.abclonal.com


Product Information

Source Rabbit
Isotype IgG**Purification**

Affinity purification

StorageStore at -20°C. Avoid freeze / thaw cycles.
Buffer: PBS with 0.02% sodium azide, 50% glycerol, pH7.3.

Contact

 | 400-999-6126 | cn.market@abclonal.com.cn | www.abclonal.com.cn

Background

Ribosomes, the organelles that catalyze protein synthesis, consist of a small 40S subunit and a large 60S subunit. Together these subunits are composed of 4 RNA species and approximately 80 structurally distinct proteins. This gene encodes a cytoplasmic ribosomal protein that is a component of the 40S subunit. The protein belongs to the S6E family of ribosomal proteins. It is the major substrate of protein kinases in the ribosome, with subsets of five C-terminal serine residues phosphorylated by different protein kinases. Phosphorylation is induced by a wide range of stimuli, including growth factors, tumor-promoting agents, and mitogens. Dephosphorylation occurs at growth arrest. The protein may contribute to the control of cell growth and proliferation through the selective translation of particular classes of mRNA. As is typical for genes encoding ribosomal proteins, there are multiple processed pseudogenes of this gene dispersed through the genome.

Component

Catalog No.	Product Name	Applications	Cross-Reactivity
AP0537	Phospho-S6 Ribosomal Protein (RPS6)-S240/244 Rabbit pAb	ELISA, WB, IHC-P, IP	Human, Mouse, Rat
A6058	S6 Ribosomal Protein (RPS6) Rabbit pAb	ELISA, WB, IHC-P, IF/ICC	Human, Mouse, Rat

Immunogen Information

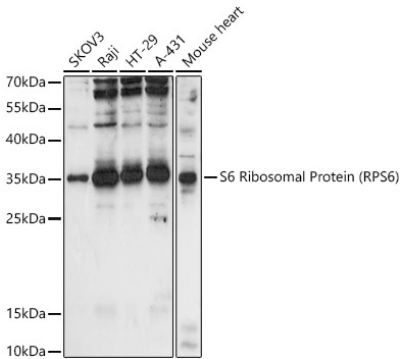
Gene ID
6194**Swiss Prot**
P62753**Immunogen**

A synthetic phosphorylated peptide around S240 & S244 of human RPS6 (NP_001001.2).
A synthetic peptide corresponding to a sequence within amino acids 1-100 of human RPS6 (NP_001001.2).

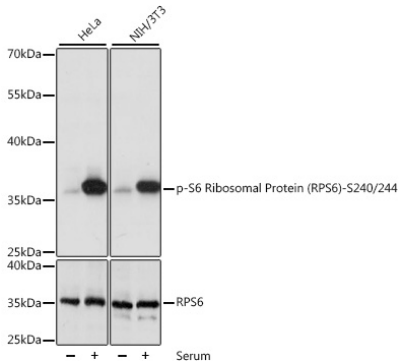
Synonyms

RPS6; S6; RPS6

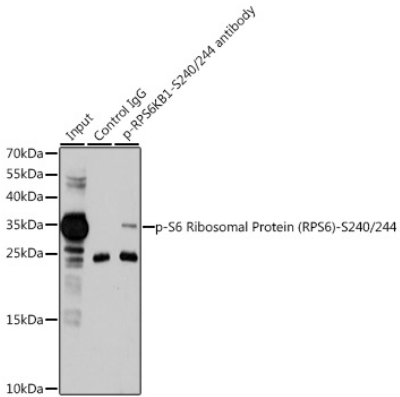
Validation Data



Western blot analysis of extracts of various cell lines, using S6 Ribosomal Protein (RPS6) antibody (A6058) at 1:1000 dilution.
Secondary antibody: HRP Goat Anti-Rabbit IgG (H+L) (AS014) at 1:10000 dilution.
Lysates/proteins: 25µg per lane.
Blocking buffer: 3% nonfat dry milk in TBST.
Detection: ECL Basic Kit (RM00020).
Exposure time: 90s.

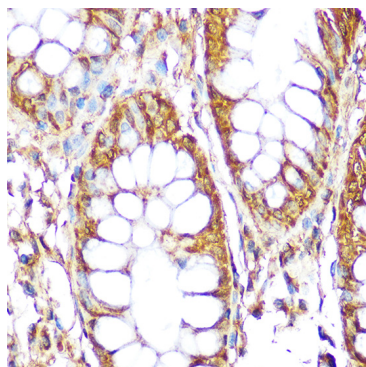


Western blot analysis of extracts of various cell lines, using Phospho-S6 Ribosomal Protein (RPS6)-S240/244 antibody (AP0537) at 1:1000 dilution or RPS6 antibody (A6058). HeLa cells were treated by 10% FBS at 37°C for 30 minutes after serum-starvation overnight. NIH/3T3 cells were treated by 10% FBS at 37°C for 30 minutes after serum-starvation overnight.
Secondary antibody: HRP Goat Anti-Rabbit IgG (H+L) (AS014) at 1:10000 dilution.
Lysates/proteins: 25µg per lane.
Blocking buffer: 3% BSA.
Detection: ECL Basic Kit (RM00020).
Exposure time: 1s.

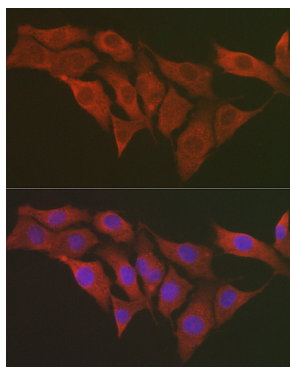


Immunoprecipitation analysis of 200 µg extracts of 293T cells, using 3 µg Phospho-S6 Ribosomal Protein (RPS6)-S240/244 pAb (AP0537). Western blot was performed from the immunoprecipitate using Phospho-RPS6-S240/244 pAb (AP0537) at a dilution of 1:1000. 293T cells were treated by PMA/TPA (200 nM) at 37°C for 30 minutes after serum-starvation overnight.

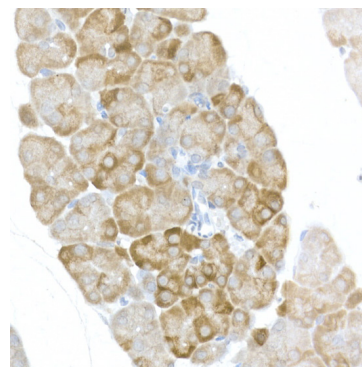
Validation Data



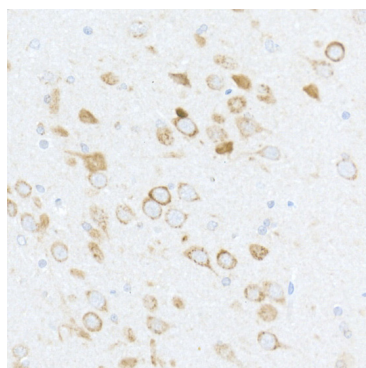
Immunohistochemistry analysis of paraffin-embedded human colon using S6 Ribosomal Protein (RPS6) Rabbit pAb (A6058) at dilution of 1:100 (40x lens). Perform microwave antigen retrieval with 10 mM Tris/EDTA buffer pH 9.0 before commencing with IHC staining protocol.



Immunofluorescence analysis of NIH/3T3 cells using S6 Ribosomal Protein (RPS6) Rabbit pAb (A6058) at dilution of 1:100 (40x lens). Blue: DAPI for nuclear staining.



Immunohistochemistry analysis of paraffin-embedded mouse pancreas using Phospho-S6 Ribosomal Protein (RPS6)-S240/244 Rabbit pAb (AP0537) at dilution of 1:50 (40x lens). Perform high pressure antigen retrieval with 10 mM citrate buffer pH 6.0 before commencing with IHC staining protocol.



Immunohistochemistry analysis of paraffin-embedded rat brain using Phospho-S6 Ribosomal Protein (RPS6)-S240/244 Rabbit pAb (AP0537) at dilution of 1:50 (40x lens). Perform high pressure antigen retrieval with 10 mM citrate buffer pH 6.0 before commencing with IHC staining protocol.