

# Phospho-RPS6KA1-S363 Antibody kit

**Catalog No.:** RK04083

## Basic Information

**Observed MW**

90kDa

**Calculated MW**

83kDa

**Category**

Primary antibody


## Recommended Dilutions

**AP0767 WB** 1:500 - 1:1000**A15718 WB** 1:500 - 1:2000For more information please visit  
[www.abclonal.com](http://www.abclonal.com)

## Product Information

**Source** Rabbit  
**Isotype** IgG**Purification**  
Affinity purification**Storage**  
Store at -20°C. Avoid freeze / thaw cycles.  
Buffer: PBS with 0.01% thimerosal, 50% glycerol, pH7.3.

## Contact

 | 400-999-6126 | [cn.market@abclonal.com.cn](mailto:cn.market@abclonal.com.cn) | [www.abclonal.com.cn](http://www.abclonal.com.cn)

## Background

This gene encodes a member of the RSK (ribosomal S6 kinase) family of serine/threonine kinases. This kinase contains 2 nonidentical kinase catalytic domains and phosphorylates various substrates, including members of the mitogen-activated kinase (MAPK) signalling pathway. The activity of this protein has been implicated in controlling cell growth and differentiation. Alternate transcriptional splice variants, encoding different isoforms, have been characterized.

## Component

| Catalog No. | Product Name                                | Applications             | Cross-Reactivity  |
|-------------|---|--------------------------|-------------------|
| AP0767      | Phospho-p90Rsk/RSK1/RPS6KA1-S363 Rabbit pAb | ELISA, WB, IP            | Human, Rat        |
| A15718      | p90Rsk/RSK1/RPS6KA1 Rabbit pAb              | ELISA, WB, IHC-P, IF/ICC | Human, Mouse, Rat |

## Immunogen Information

**Gene ID** 6195  
**Swiss Prot** Q15418**Immunogen**

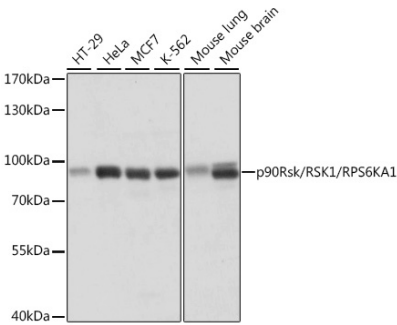
A synthetic phosphorylated peptide around S363 of human p90Rsk/RSK1/RPS6KA1 (NP\_002944.2).

A synthetic peptide corresponding to a sequence within amino acids 600 to the C-terminus of human p90Rsk/RSK1/RPS6KA1 (NP\_002944.2).

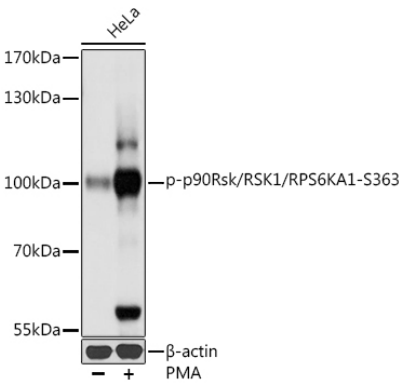
**Synonyms**

HU-1; MAPKAPK1A; RSK; RSK1; p90Rsk; RPS6KA1

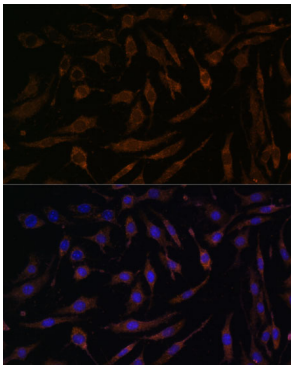
Validation Data



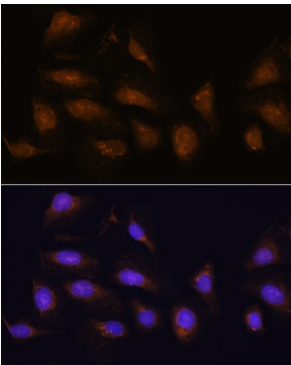
Western blot analysis of various lysates using p90Rsk/RSK1/RPS6KA1 Rabbit pAb (A15718) at 1:1000 dilution.  
Secondary antibody: HRP Goat Anti-Rabbit IgG (H+L) (AS014) at 1:10000 dilution.  
Lysates/proteins: 25µg per lane.  
Blocking buffer: 3% nonfat dry milk in TBST.  
Detection: ECL Basic Kit (RM00020).  
Exposure time: 1s.



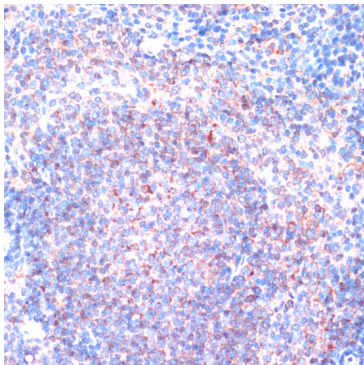
Western blot analysis of various lysates using (AP0767) at 1:1000 dilution. HeLa cells were treated by PMA/TPA (200 nM) at 37°C for 30 minutes after serum-starvation overnight.  
Secondary antibody: HRP Goat Anti-Rabbit IgG (H+L) (AS014) at 1:10000 dilution.  
Lysates/proteins: 25µg per lane.  
Blocking buffer: 3% nonfat dry milk in TBST.  
Detection: ECL Basic Kit (RM00020).  
Exposure time: 1s.



Immunofluorescence analysis of L929 cells using p90Rsk/RSK1/RPS6KA1 Rabbit pAb (A15718) at dilution of 1:100. Secondary antibody: Cy3 Goat Anti-Rabbit IgG (H+L) (AS007) at 1:500 dilution. Blue: DAPI for nuclear staining.



Immunofluorescence analysis of U-2 OS cells using p90Rsk/RSK1/RPS6KA1 Rabbit pAb (A15718) at dilution of 1:100. Secondary antibody: Cy3 Goat Anti-Rabbit IgG (H+L) (AS007) at 1:500 dilution. Blue: DAPI for nuclear staining.



Immunohistochemistry analysis of p90Rsk/RSK1/RPS6KA1 in paraffin-embedded mouse spleen using p90Rsk/RSK1/RPS6KA1 Rabbit pAb (A15718) at dilution of 1:100 (40x lens). Perform microwave antigen retrieval with 10 mM PBS buffer pH 7.2 before commencing with IHC staining protocol.