

# Phospho-RELA-S311 Antibody kit

**Catalog No.:** RK04086

## Basic Information

**Observed MW**

65kDa

**Calculated MW**

60kDa

**Category**

Primary antibody

## Recommended Dilutions

**AP0445 WB** 1:500 - 1:1000**A11201 WB** 1:500 - 1:1000For more information please visit  
[www.abclonal.com](http://www.abclonal.com)


## Product Information

**Source** Rabbit  
**Isotype** IgG**Purification**

Affinity purification

**Storage**Store at -20°C. Avoid freeze / thaw cycles.  
Buffer: PBS with 0.05% proclin300,50% glycerol,pH7.3.

## Contact

 | 400-999-6126 | [cn.market@abclonal.com.cn](mailto:cn.market@abclonal.com.cn) | [www.abclonal.com.cn](http://www.abclonal.com.cn)

## Background

NF-kappa-B is a ubiquitous transcription factor involved in several biological processes. It is held in the cytoplasm in an inactive state by specific inhibitors. Upon degradation of the inhibitor, NF-kappa-B moves to the nucleus and activates transcription of specific genes. NF-kappa-B is composed of NFKB1 or NFKB2 bound to either REL, RELA, or RELB. The most abundant form of NF-kappa-B is NFKB1 complexed with the product of this gene, RELA. Four transcript variants encoding different isoforms have been found for this gene.

## Component

Catalog No.	Product Name	Applications	Cross-Reactivity
AP0445	Phospho-NF-kB p65/RelA-S311 Rabbit pAb	ELISA,WB	Human, Mouse
A11201	NF-kB p65/RelA Rabbit pAb	ELISA,WB,IHC-P,IF/ICC	Human, Rat

## Immunogen Information

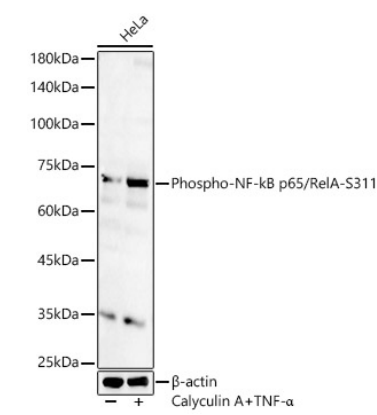
**Gene ID**  
5970**Swiss Prot**  
Q04206**Immunogen**

A synthetic phosphorylated peptide around S311 of human RelA (NP\_068810.3).  
Recombinant fusion protein containing a sequence corresponding to amino acids 1-200 of human NF-kB p65/RelA (NP\_068810.3).

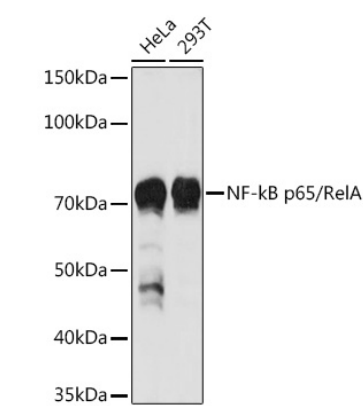
**Synonyms**

NFKB3;p65;NF-kB p65;RELA;CMCU

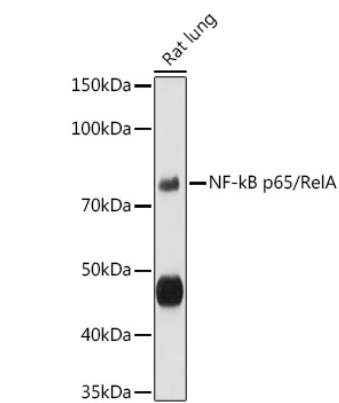
Validation Data



Western blot analysis of HeLa, using Phospho-NF-kB p65/RelA-S311 antibody (AP0445) at 1:1000 dilution. HeLa cells were treated by TNF-α (20 ng/ml) and Calyculin A (100 nM) at 37°C for 30 minutes after serum-starvation overnight.  
Secondary antibody: HRP Goat Anti-Rabbit IgG (H+L) (AS014) at 1:10000 dilution.  
Lysates/proteins: 25µg per lane.  
Blocking buffer: 3% nonfat dry milk in TBST.  
Detection: ECL Basic Kit (RM00020).  
Exposure time: 60s.



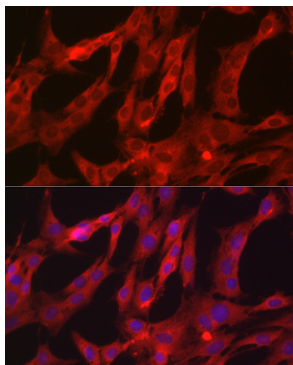
Western blot analysis of extracts of various cell lines, using NF-kB p65/RelA antibody (A11201) at 1:1000 dilution.  
Secondary antibody: HRP Goat Anti-Rabbit IgG (H+L) (AS014) at 1:10000 dilution.  
Lysates/proteins: 25µg per lane.  
Blocking buffer: 3% nonfat dry milk in TBST.  
Detection: ECL Basic Kit (RM00020).  
Exposure time: 10s.



Western blot analysis of extracts of Rat lung, using NF-kB p65/RelA antibody (A11201) at 1:1000 dilution.  
Secondary antibody: HRP Goat Anti-Rabbit IgG (H+L) (AS014) at 1:10000 dilution.  
Lysates/proteins: 25µg per lane.  
Blocking buffer: 3% nonfat dry milk in TBST.  
Detection: ECL Basic Kit (RM00020).  
Exposure time: 90s.

## Validation Data

---



Immunofluorescence analysis of C6 cells using NF-kB p65/RelA Rabbit pAb (A11201) at dilution of 1:200 (40x lens). Blue: DAPI for nuclear staining.