

Phospho-CREB1-S133 Antibody kit

Catalog No.: RK04087

Basic Information

Observed MW

43kDa

Calculated MW

35kDa

Category

Primary antibody

Recommended Dilutions

AP0019 WB 1:200 - 1:2000**A11989 WB** 1:500 - 1:2000For more information please visit
www.abclonal.com


Product Information

Source Rabbit
Isotype IgG**Purification**

Affinity purification

StorageStore at -20°C. Avoid freeze / thaw cycles.
Buffer: PBS with 0.02% sodium azide, 50% glycerol, pH7.3.

Contact

 | 400-999-6126 | cn.market@abclonal.com.cn | www.abclonal.com.cn

Background

This gene encodes a transcription factor that is a member of the leucine zipper family of DNA binding proteins. This protein binds as a homodimer to the cAMP-responsive element, an octameric palindrome. The protein is phosphorylated by several protein kinases, and induces transcription of genes in response to hormonal stimulation of the cAMP pathway. Alternate splicing of this gene results in several transcript variants encoding different isoforms.

Component

Catalog No.	Product Name	Applications	Cross-Reactivity
AP0019	Phospho-CREB1-S133 Rabbit pAb	ELISA, WB, IHC-P, IF/ICC	Human, Mouse, Rat
A11989	CREB1 Rabbit pAb	ELISA, WB, IHC-P, IF/ICC, IP	Human, Mouse, Rat

Immunogen Information

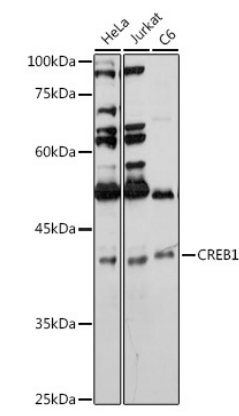
Gene ID
1385**Swiss Prot**
P16220**Immunogen**

A synthetic phosphorylated peptide around S133 of human CREB1 (NP_604391.1).
Recombinant fusion protein containing a sequence corresponding to amino acids 1-341 of human CREB1 (NP_604391.1).

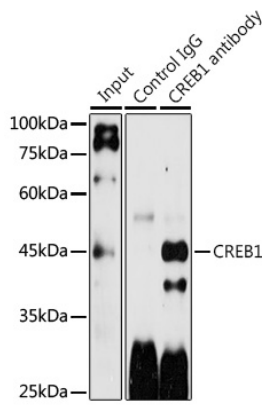
Synonyms

CREB1; CREB; CREB-1

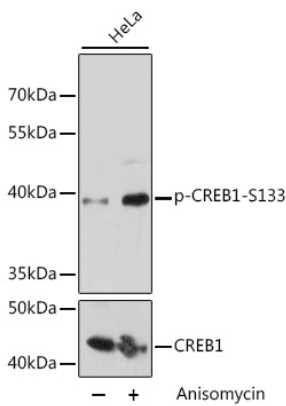
Validation Data



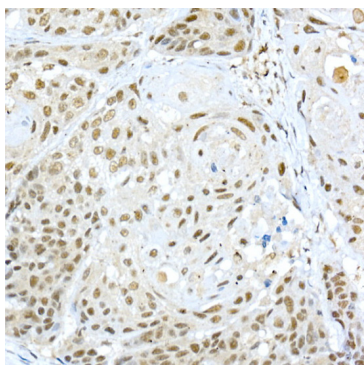
Western blot analysis of various lysates using CREB1 Rabbit pAb (A11989) at 1:1000 dilution.
Secondary antibody: HRP Goat Anti-Rabbit IgG (H+L) (AS014) at 1:10000 dilution.
Lysates/proteins: 25µg per lane.
Blocking buffer: 3% nonfat dry milk in TBST.
Detection: ECL Basic Kit (RM00020).
Exposure time: 30s.



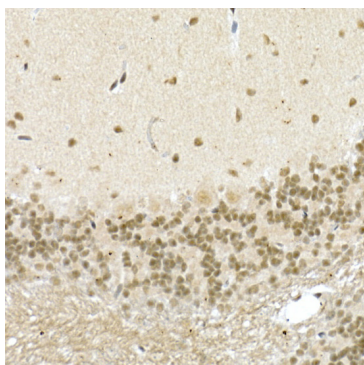
Immunoprecipitation analysis of 300 µg extracts of LO2 cells using 3 µg CREB1 antibody (A11989).
Western blot was performed from the immunoprecipitate using CREB1 antibody (A11989) at a dilution of 1:1000.



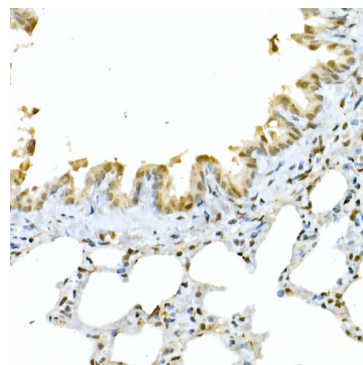
Western blot analysis of extracts of HeLa cells, using Phospho-CREB1-S133 pAb (AP0019) at 1:2000 dilution or CREB1 antibody (A11064).HeLa cells were treated by Anisomycin (25 µg/mL) at 37°C for 30 minutes after serum-starvation overnight.
Secondary antibody: HRP Goat Anti-Rabbit IgG (H+L) (AS014) at 1:10000 dilution.
Lysates/proteins: 25µg per lane.
Blocking buffer: 3% BSA.
Detection: ECL Basic Kit (RM00020).
Exposure time: 30s.



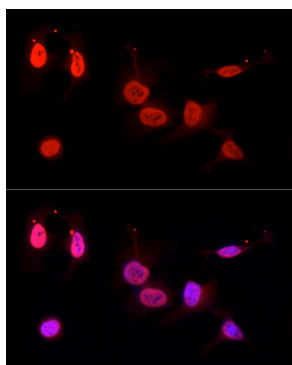
Immunohistochemistry analysis of CREB1 in paraffin-embedded human esophageal cancer using CREB1 Rabbit pAb (A11989) at dilution of 1:50 (40x lens). Perform high pressure antigen retrieval with 10 mM citrate buffer pH 6.0 before commencing with IHC staining protocol.



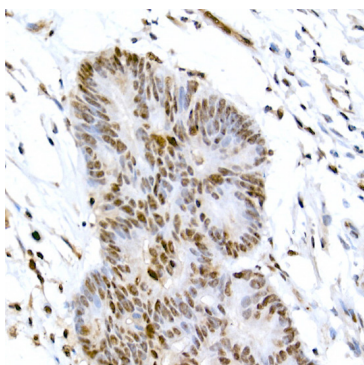
Immunohistochemistry analysis of CREB1 in paraffin-embedded mouse brain using CREB1 Rabbit pAb (A11989) at dilution of 1:50 (40x lens). Perform high pressure antigen retrieval with 10 mM citrate buffer pH 6.0 before commencing with IHC staining protocol.



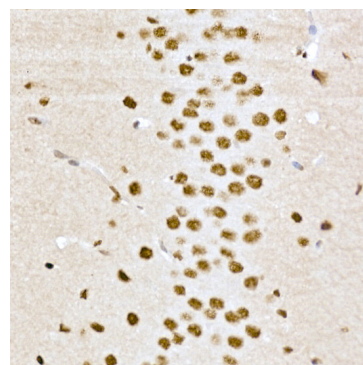
Immunohistochemistry analysis of CREB1 in paraffin-embedded rat lung using CREB1 Rabbit pAb (A11989) at dilution of 1:50 (40x lens). Perform high pressure antigen retrieval with 10 mM citrate buffer pH 6.0 before commencing with IHC staining protocol.



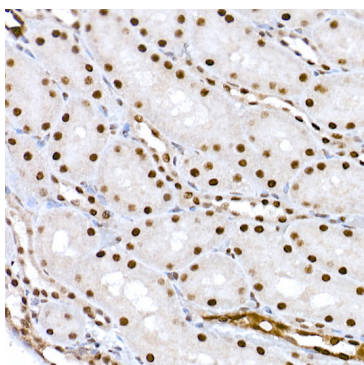
Immunofluorescence analysis of HeLa cells using CREB1 Rabbit pAb (A11989) at a dilution of 1:25 (40x lens). Secondary antibody: Cy3 Goat Anti-Rabbit IgG (H+L) (AS007) at 1:500 dilution. Blue: DAPI for nuclear staining.



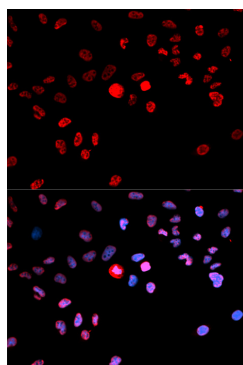
Immunohistochemistry analysis of paraffin-embedded human colon carcinoma using Phospho-CREB1-S133 Rabbit pAb (AP0019) at dilution of 1:100 (40x lens). Perform high pressure antigen retrieval with 10 mM citrate buffer pH 6.0 before commencing with IHC staining protocol.



Immunohistochemistry analysis of paraffin-embedded mouse brain using Phospho-CREB1-S133 Rabbit pAb (AP0019) at dilution of 1:100 (40x lens). Perform high pressure antigen retrieval with 10 mM citrate buffer pH 6.0 before commencing with IHC staining protocol.



Immunohistochemistry analysis of paraffin-embedded rat kidney using Phospho-CREB1-S133 Rabbit pAb (AP0019) at dilution of 1:100 (40x lens). Perform high pressure antigen retrieval with 10 mM citrate buffer pH 6.0 before commencing with IHC staining protocol.



Immunofluorescence analysis of MCF-7 cells using Phospho-CREB1-S133 antibody (AP0019). Blue: DAPI for nuclear staining.