

Phospho-Stat3-S727 Antibody kit

Catalog No.: RK04089

Basic Information

Observed MW

86kDa

Calculated MW

88kDa

Category

Primary antibody


Recommended Dilutions

AP0474 WB 1:500 - 1:1000**A1192 WB** 1:500 - 1:1000For more information please visit
www.abclonal.com

Product Information

Source Rabbit
Isotype IgG**Purification**
Affinity purification**Storage**
Store at -20°C. Avoid freeze / thaw cycles.
Buffer: PBS with 0.01% thimerosal, 50% glycerol, pH7.3.

Contact

 | 400-999-6126 | cn.market@abclonal.com.cn | www.abclonal.com.cn

Background

The protein encoded by this gene is a member of the STAT protein family. In response to cytokines and growth factors, STAT family members are phosphorylated by the receptor associated kinases, and then form homo- or heterodimers that translocate to the cell nucleus where they act as transcription activators. This protein is activated through phosphorylation in response to various cytokines and growth factors including IFNs, EGF, IL5, IL6, HGF, LIF and BMP2. This protein mediates the expression of a variety of genes in response to cell stimuli, and thus plays a key role in many cellular processes such as cell growth and apoptosis. The small GTPase Rac1 has been shown to bind and regulate the activity of this protein. PIAS3 protein is a specific inhibitor of this protein. This gene also plays a role in regulating host response to viral and bacterial infections. Mutations in this gene are associated with infantile-onset multisystem autoimmune disease and hyper-immunoglobulin E syndrome.

Component

Catalog No.	Product Name	Applications	Cross-Reactivity
AP0474	Phospho-STAT3-S727 Rabbit pAb	ELISA, WB, IHC-P, IP	Human, Mouse, Rat
A1192	STAT3 Rabbit pAb	ELISA, WB, IHC-P, IF/ICC	Human, Mouse, Rat

Immunogen Information

Gene ID 6774
Swiss Prot P40763**Immunogen**

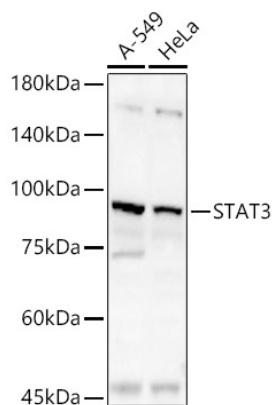
A synthetic phosphorylated peptide around S727 of human Phospho-STAT3-S727 (NP_644805.1).

A synthetic peptide corresponding to a sequence within amino acids 600-700 of human STAT3 (NP_003141.2).

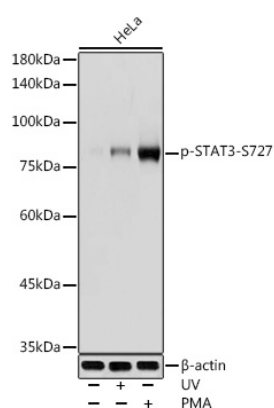
Synonyms

ADMIO; ADMIO1; APRF; HIES; STAT3; Stat3

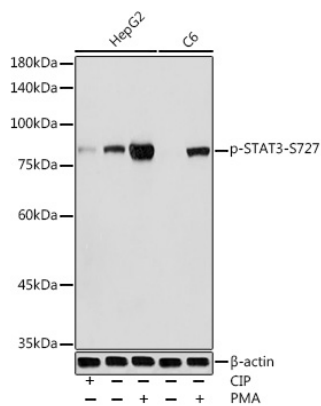
Validation Data



Western blot analysis of various lysates, using STAT3 Rabbit pAb (A1192) at 1:2500 dilution.
 Secondary antibody: HRP Goat Anti-Rabbit IgG (H+L) (AS014) at 1:10000 dilution.
 Lysates/proteins: 25µg per lane.
 Blocking buffer: 3% nonfat dry milk in TBST.
 Detection: ECL Basic Kit (RM00020).
 Exposure time: 60s.

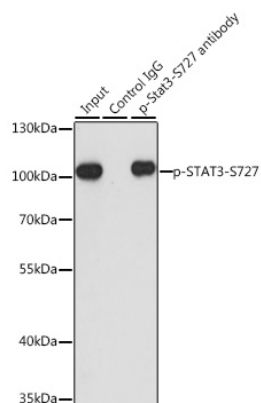


Western blot analysis of extracts of HeLa cells, using Phospho-STAT3-S727 antibody (AP0474) at 1:1000 dilution. HeLa cells were treated by UV at room temperature for 15-30 minutes. HeLa cells were treated by PMA/TPA (200 nM) at 37°C for 15 minutes after serum-starvation overnight.
 Secondary antibody: HRP Goat Anti-Rabbit IgG (H+L) (AS014) at 1:10000 dilution.
 Lysates/proteins: 25µg per lane.
 Blocking buffer: 3% nonfat dry milk in TBST.
 Detection: ECL Basic Kit (RM00020).
 Exposure time: 1s.

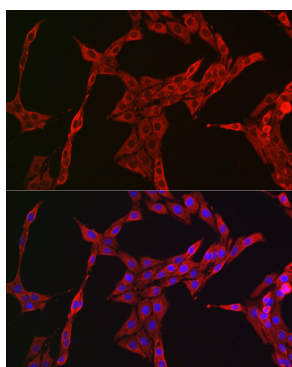


Western blot analysis of extracts of various cell lines, using Phospho-STAT3-S727 antibody (AP0474) at 1:1000 dilution. HepG2 cells and C6 cells were treated by PMA/TPA (200 nM) at 37°C for 30 minutes after serum-starvation overnight. HepG2 cells were treated by CIP (20uL/400uL) at 37°C for 1 hour.
 Secondary antibody: HRP Goat Anti-Rabbit IgG (H+L) (AS014) at 1:10000 dilution.
 Lysates/proteins: 25µg per lane.
 Blocking buffer: 3% nonfat dry milk in TBST.
 Detection: ECL Basic Kit (RM00020).
 Exposure time: 1s.

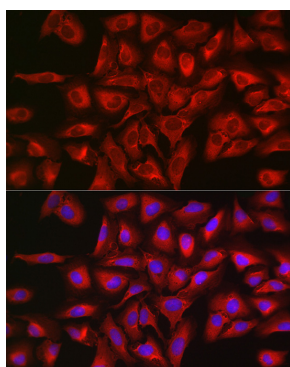
Validation Data



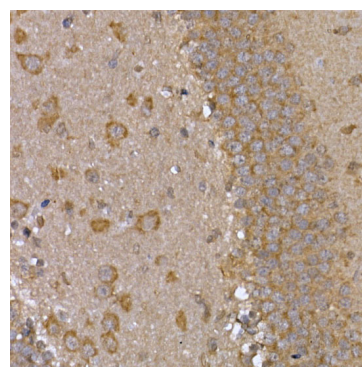
Immunoprecipitation analysis of 200 µg extracts of HeLa cells, using 3 µg Phospho-STAT3-S727 pAb (AP0474). Western blot was performed from the immunoprecipitate using Phospho-STAT3-S727 pAb (AP0474) at a dilution of 1:1000. HeLa cells were treated by PMA/TPA (200 nM) at 37°C for 15 minutes after serum-starvation overnight.



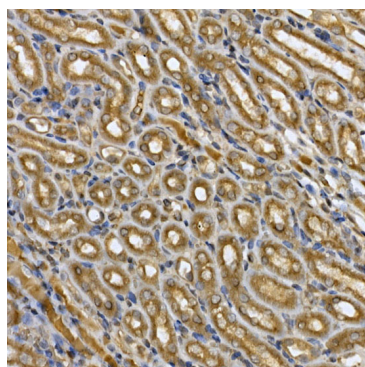
Immunofluorescence analysis of PC-12 cells using STAT3 Rabbit pAb (A1192) at dilution of 1:200 (40x lens). Blue: DAPI for nuclear staining.



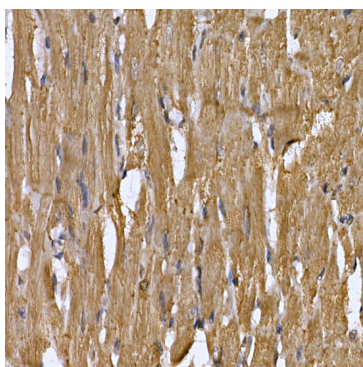
Immunofluorescence analysis of U2OS cells using STAT3 Rabbit pAb (A1192) at dilution of 1:200 (40x lens). Blue: DAPI for nuclear staining.



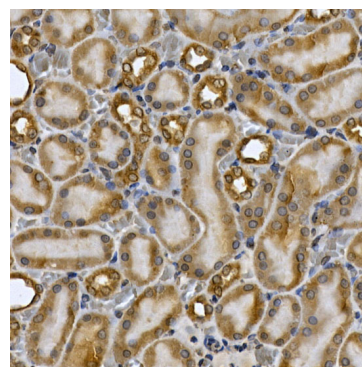
Immunohistochemistry analysis of paraffin-embedded mouse brain using STAT3 Rabbit pAb (A1192) at dilution of 1:200 (40x lens). Perform high pressure antigen retrieval with 10 mM citrate buffer pH 6.0 before commencing with IHC staining protocol.



Immunohistochemistry analysis of paraffin-embedded mouse kidney using STAT3 Rabbit pAb (A1192) at dilution of 1:200 (40x lens). Perform high pressure antigen retrieval with 10 mM citrate buffer pH 6.0 before commencing with IHC staining protocol.

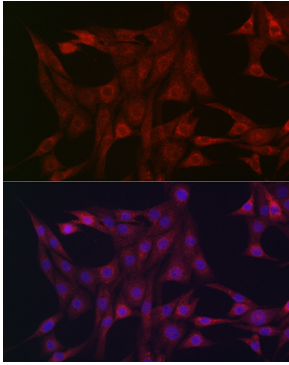


Immunohistochemistry analysis of paraffin-embedded rat heart using STAT3 Rabbit pAb (A1192) at dilution of 1:200 (40x lens). Perform high pressure antigen retrieval with 10 mM citrate buffer pH 6.0 before commencing with IHC staining protocol.

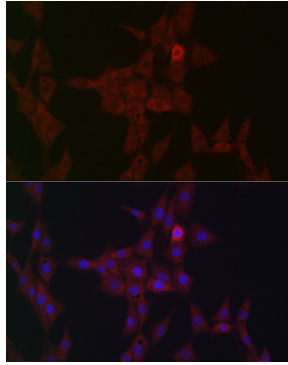


Immunohistochemistry analysis of paraffin-embedded rat kidney using STAT3 Rabbit pAb (A1192) at dilution of 1:200 (40x lens). Perform high pressure antigen retrieval with 10 mM citrate buffer pH 6.0 before commencing with IHC staining protocol.

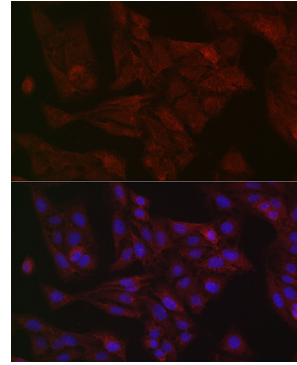
Validation Data



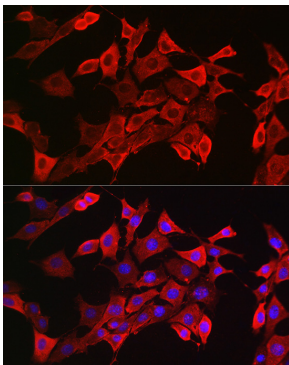
Immunofluorescence analysis of NIH/3T3 cells using STAT3 Rabbit pAb (A1192) at dilution of 1:100 (40x lens). Blue: DAPI for nuclear staining.



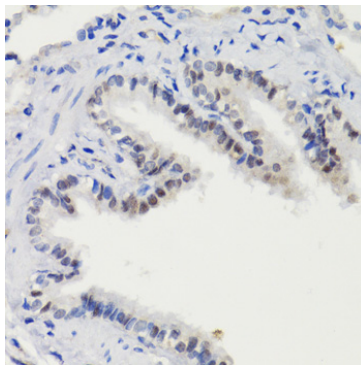
Immunofluorescence analysis of PC-12 cells using STAT3 Rabbit pAb (A1192) at dilution of 1:100 (40x lens). Blue: DAPI for nuclear staining.



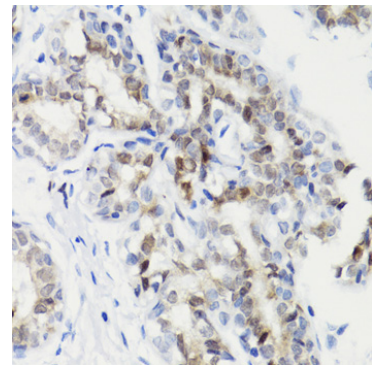
Immunofluorescence analysis of U2OS cells using STAT3 Rabbit pAb (A1192) at dilution of 1:100 (40x lens). Blue: DAPI for nuclear staining.



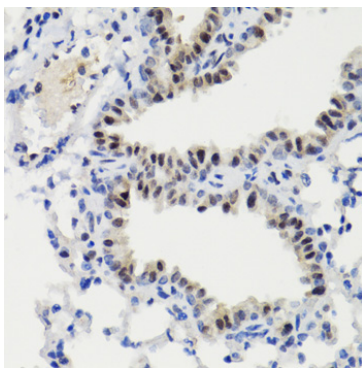
Immunofluorescence analysis of NIH/3T3 cells using STAT3 Rabbit pAb (A1192) at dilution of 1:200 (40x lens). Blue: DAPI for nuclear staining.



Immunohistochemistry analysis of paraffin-embedded rat lung using Phospho-STAT3-S727 antibody (AP0474) at dilution of 1:100 (40x lens). Perform microwave antigen retrieval with 10 mM Tris/EDTA buffer pH 9.0 before commencing with IHC staining protocol.



Immunohistochemistry analysis of paraffin-embedded human breast cancer using Phospho-STAT3-S727 antibody (AP0474) at dilution of 1:100 (40x lens). Perform microwave antigen retrieval with 10 mM Tris/EDTA buffer pH 9.0 before commencing with IHC staining protocol.



Immunohistochemistry analysis of paraffin-embedded mouse lung using Phospho-STAT3-S727 antibody (AP0474) at dilution of 1:100 (40x lens). Perform microwave antigen retrieval with 10 mM Tris/EDTA buffer pH 9.0 before commencing with IHC staining protocol.