

# Phospho-CRKL-Y207 Antibody kit

**Catalog No.: RK04091**

## Basic Information

**Observed MW**

38kDa

**Calculated MW**

34kDa

**Category**

Primary antibody

## Recommended Dilutions

**AP0824 WB** 1:500 - 1:2000**A11735 WB** 1:500 - 1:2000For more information please visit  
[www.abclonal.com](http://www.abclonal.com)

## Product Information

**Source** Rabbit  
**Isotype** IgG**Purification**



Affinity purification

**Storage**

Store at -20°C. Avoid freeze / thaw cycles.

Buffer: PBS with 0.01% thimerosal, 50% glycerol, pH7.3.

## Contact

 | 400-999-6126 | [cn.market@abclonal.com.cn](mailto:cn.market@abclonal.com.cn) | [www.abclonal.com.cn](http://www.abclonal.com.cn)

## Background

This gene encodes a protein kinase containing SH2 and SH3 (src homology) domains which has been shown to activate the RAS and JUN kinase signaling pathways and transform fibroblasts in a RAS-dependent fashion. It is a substrate of the BCR-ABL tyrosine kinase, plays a role in fibroblast transformation by BCR-ABL, and may be oncogenic.

## Component

Catalog No.	Product Name	Applications	Cross-Reactivity
AP0824	Phospho-CRKL-Y207 Rabbit pAb	ELISA, WB, IHC-P	Human, Mouse, Rat
A11735	CRKL Rabbit pAb	ELISA, WB	Human, Mouse, Rat

## Immunogen Information

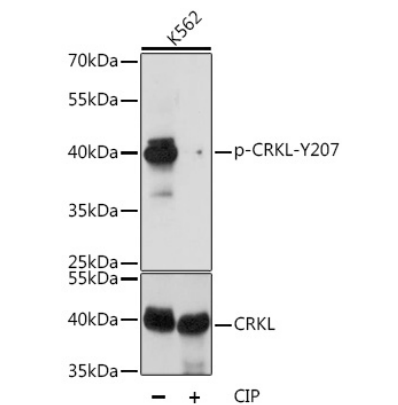
**Gene ID**  
1399**Swiss Prot**  
P46109**Immunogen**

A synthetic phosphorylated peptide around Y207 of human CRKL (NP\_005198.1).  
Recombinant fusion protein containing a sequence corresponding to amino acids 1-303 of human CRKL (NP\_005198.1).

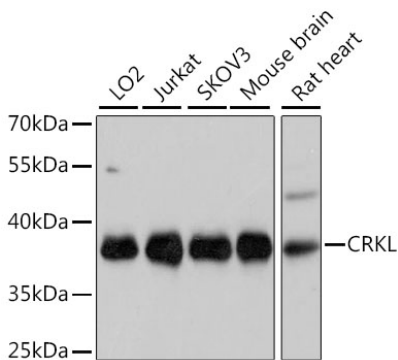
**Synonyms**

CRKL

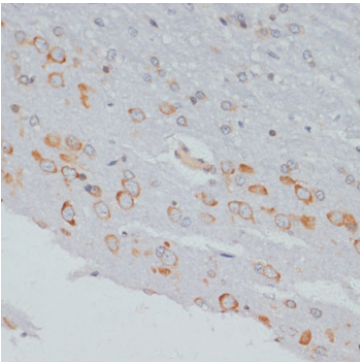
Validation Data



Western blot analysis of lysates from K-562 cells, using Phospho-CRKL-Y207 Rabbit pAb (AP0824) at 1:1000 dilution or CRKL antibody (A11735). K-562 cells were treated by CIP(20uL/400ul) at 37°C for 1 hour.  
Secondary antibody: HRP Goat Anti-Rabbit IgG (H+L) (AS014) at 1:10000 dilution.  
Lysates/proteins: 25µg per lane.  
Blocking buffer: 3% BSA.  
Detection: ECL Basic Kit (RM00020).  
Exposure time: 5s.



Western blot analysis of extracts of various cell lines, using CRKL Antibody (A11735) at 1:1000 dilution.  
Secondary antibody: HRP Goat Anti-Rabbit IgG (H+L) (AS014) at 1:10000 dilution.  
Lysates/proteins: 25µg per lane.  
Blocking buffer: 3% nonfat dry milk in TBST.  
Detection: ECL Basic Kit (RM00020).  
Exposure time: 30s.



Immunohistochemistry analysis of Phospho-CRKL-Y207 in paraffin-embedded rat brain using Phospho-CRKL-Y207 Rabbit pAb (AP0824) at dilution of 1:100 (40x lens).Perform microwave antigen retrieval with 10 mM Tris/EDTA buffer pH 9.0 before commencing with IHC staining protocol.