

Phospho-DPYSL2-T514 Antibody kit

Catalog No.: RK04092

Basic Information

Observed MW

69kDa

Calculated MW

62kDa

Category

Primary antibody

Recommended Dilutions

AP0821 WB 1:500 - 1:2000**A14570 WB** 1:500 - 1:2000For more information please visit
www.abclonal.com


Product Information

Source Rabbit
Isotype IgG**Purification**

Affinity purification

StorageStore at -20°C. Avoid freeze / thaw cycles.
Buffer: PBS with 0.01% thimerosal, 50% glycerol, pH7.3.

Contact

 | 400-999-6126 | cn.market@abclonal.com.cn | www.abclonal.com.cn

Background

This gene encodes a member of the collapsin response mediator protein family. Collapsin response mediator proteins form homo- and hetero-tetramers and facilitate neuron guidance, growth and polarity. The encoded protein promotes microtubule assembly and is required for Sema3A-mediated growth cone collapse, and also plays a role in synaptic signaling through interactions with calcium channels. This gene has been implicated in multiple neurological disorders, and hyperphosphorylation of the encoded protein may play a key role in the development of Alzheimer's disease. Alternatively spliced transcript variants encoding multiple isoforms have been observed for this gene.

Component

Catalog No.	Product Name	Applications	Cross-Reactivity
AP0821	Phospho-CRMP2/DPYSL2-T514 Rabbit pAb	ELISA, WB	Human, Mouse, Rat
A14570	[KO Validated] CRMP2/DPYSL2 Rabbit pAb	ELISA, WB, IHC-P	Human, Mouse, Rat

Immunogen Information

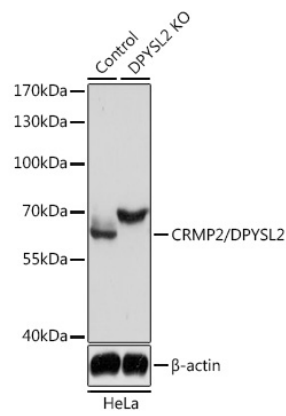
Gene ID
1808**Swiss Prot**
Q16555**Immunogen**

A synthetic phosphorylated peptide around T514 of human CRMP2/DPYSL2 (NP_001377.1).
A synthetic peptide corresponding to a sequence within amino acids 400-500 of human CRMP2/CRMP2/DPYSL2 (NP_001377.1).

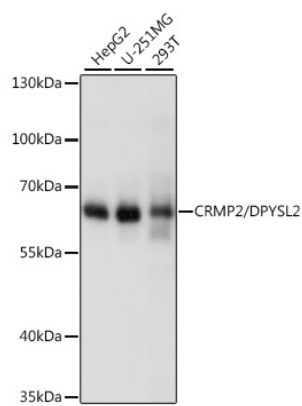
Synonyms

DPYSL2; CRMP-2; CRMP2; DHPRP2; DRP-2; DRP2; N2A3; ULIP-2; ULIP2

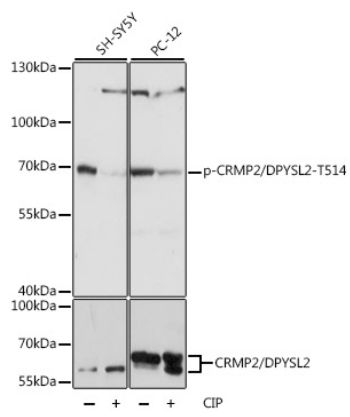
Validation Data



Western blot analysis of lysates from wild type (WT) and CRMP2/CRMP2/DPYSL2 knockout (KO) HeLa cells, using [KO Validated] CRMP2/DPYSL2 Rabbit pAb (A14570) at 1:3000 dilution.
Secondary antibody: HRP Goat Anti-Rabbit IgG (H+L) (AS014) at 1:10000 dilution.
Lysates/proteins: 25 μ g per lane.
Blocking buffer: 3% nonfat dry milk in TBST.
Detection: ECL Basic Kit (RM00020).
Exposure time: 5s.

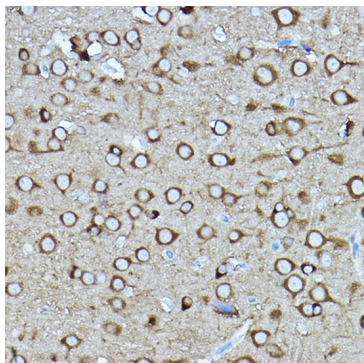


Western blot analysis of various lysates using [KO Validated] CRMP2/DPYSL2 Rabbit pAb (A14570) at 1:1000 dilution.
Secondary antibody: HRP Goat Anti-Rabbit IgG (H+L) (AS014) at 1:10000 dilution.
Lysates/proteins: 25 μ g per lane.
Blocking buffer: 3% nonfat dry milk in TBST.
Detection: ECL Basic Kit (RM00020).
Exposure time: 10s.

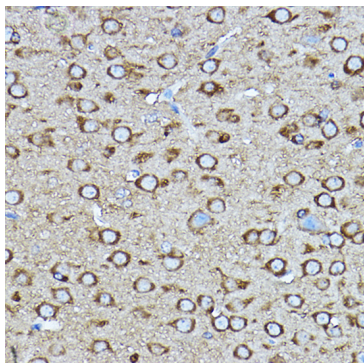


Western blot analysis of various lysates using Phospho-CRMP2/DPYSL2-T514 Rabbit pAb (AP0821) at 1:1000 dilution or CRMP2/DPYSL2 antibody (A14570). SH-SY5Y cells were treated by CIP(20uL/400ul) at 37°C for 1 hour. PC-12 cells were treated by CIP(20uL/400ul) at 37°C for 1 hour.
Secondary antibody: HRP Goat Anti-Rabbit IgG (H+L) (AS014) at 1:10000 dilution.
Lysates/proteins: 25 μ g per lane.
Blocking buffer: 3% BSA.
Detection: ECL Basic Kit (RM00020).
Exposure time: 1s.

Validation Data



Immunohistochemistry analysis of paraffin-embedded rat brain using [KO Validated] CRMP2/CRMP2/DPYSL2 Rabbit pAb (A14570) at dilution of 1:400 (40x lens). Perform high pressure antigen retrieval with 10 mM citrate buffer pH 6.0 before commencing with IHC staining protocol.



Immunohistochemistry analysis of paraffin-embedded mouse brain using [KO Validated] CRMP2/CRMP2/DPYSL2 Rabbit pAb (A14570) at dilution of 1:400 (40x lens). Perform high pressure antigen retrieval with 10 mM citrate buffer pH 6.0 before commencing with IHC staining protocol.