

Phospho-GRIA1-S845 Antibody Kit

Catalog No.: RK04093

Basic Information

Observed MW

90kDa

Calculated MW

102kDa

Category

Primary antibody

Recommended Dilutions

AP0825 WB 1:500 - 1:2000**A1826 WB** 1:500 - 1:1000For more information please visit
www.abclonal.com

Product Information

Source Rabbit
Isotype IgG**Purification**


Affinity purification

Storage

Store at -20°C. Avoid freeze / thaw cycles.

Buffer: PBS with 0.01% thimerosal, 50% glycerol, pH7.3.

Contact

 | 400-999-6126 | cn.market@abclonal.com.cn | www.abclonal.com.cn

Background

Glutamate receptors are the predominant excitatory neurotransmitter receptors in the mammalian brain and are activated in a variety of normal neurophysiologic processes. These receptors are heteromeric protein complexes with multiple subunits, each possessing transmembrane regions, and all arranged to form a ligand-gated ion channel. The classification of glutamate receptors is based on their activation by different pharmacologic agonists. This gene belongs to a family of alpha-amino-3-hydroxy-5-methyl-4-isoxazole propionate (AMPA) receptors. Alternatively spliced transcript variants encoding different isoforms have been found for this gene.

Component

Catalog No.	Product Name	Applications	Cross-Reactivity
AP0825	Phospho-GluR1/GRIA1-S845 Rabbit pAb	ELISA, WB	Human, Mouse, Rat
A1826	GluR1/GRIA1 Rabbit pAb	ELISA, WB, IHC-P	Human, Mouse, Rat

Immunogen Information

Gene ID

2890

Swiss Prot

P42261

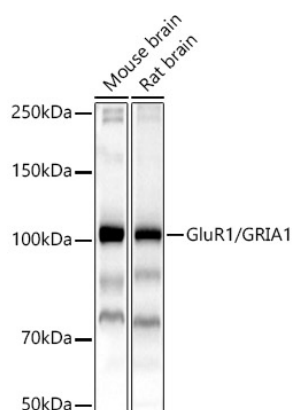
Immunogen

A phospho specific peptide corresponding to residues surrounding S845 of human GRIA1 Recombinant fusion protein containing a sequence corresponding to amino acids 19-300 of human GRIA1 (NP_000818.2). A phospho specific peptide corresponding to residues surrounding S845 of human GluR1/GRIA1 Recombinant fusion protein containing a sequence corresponding to amino acids 330-470 of human GluR1/GRIA1 (NP_000818.2).

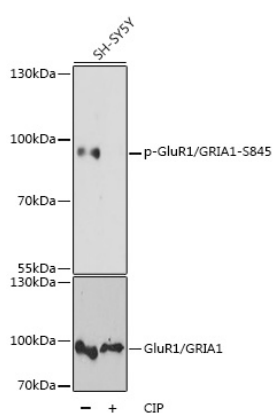
Synonyms

GluA1; GLUH1; GLUR1; GLURA; HBGR1

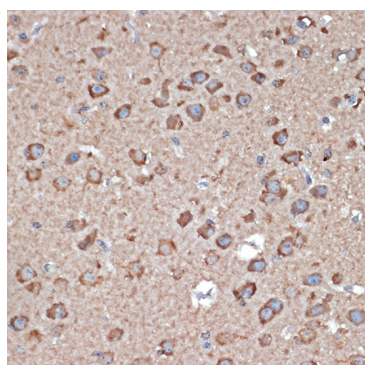
Validation Data



Western blot analysis of various lysates, using GluR1/GRIA1 Rabbit pAb (A1826) at 1:500 dilution.
 Secondary antibody: HRP Goat Anti-Rabbit IgG (H+L) (AS014) at 1:10000 dilution.
 Lysates/proteins: 25µg per lane.
 Blocking buffer: 3% nonfat dry milk in TBST.
 Detection: ECL Basic Kit (RM00020).
 Exposure time: 30s.



Western blot analysis of lysates from SH-SY5Y cells, using Phospho-GluR1/GRIA1-S845 Rabbit pAb (AP0825) at 1:1000 dilution or GluR1/GRIA1 antibody (A1826). SH-SY5Y cells were treated by CIP(20uL/400ul) at 37°C for 1 hour.
 Secondary antibody: HRP Goat Anti-Rabbit IgG (H+L) (AS014) at 1:10000 dilution.
 Lysates/proteins: 25µg per lane.
 Blocking buffer: 3% BSA.
 Detection: ECL Basic Kit (RM00020).
 Exposure time: 15s.



Immunohistochemistry analysis of GluR1/GRIA1 in paraffin-embedded mouse brain using GluR1/GRIA1 Rabbit pAb (A1826) at dilution of 1:100 (40x lens). Perform microwave antigen retrieval with 10 mM Tris/EDTA buffer pH 9.0 before commencing with IHC staining protocol.