

Phospho-STAT1-Y701 Antibody Kit

Catalog No.: RK04100

Basic Information

Observed MW

84kDa/91kDa

Calculated MW

87kDa

Category

Primary antibody

Recommended Dilutions

AP0135 WB 1:500 - 1:1000

A12075 WB 1:100 - 1:500

For more information please visit
www.abclonal.com

Product Information

Source Rabbit
Isotype IgG

Purification
Affinity purification

Storage
Store at -20°C. Avoid freeze / thaw cycles.
Buffer: PBS with 0.01% thimerosal, 50% glycerol, pH7.3.

Contact

☎ | 400-999-6126

✉ | cn.market@abclonal.com.cn

🌐 | www.abclonal.com.cn

Background

The protein encoded by this gene is a member of the STAT protein family. In response to cytokines and growth factors, STAT family members are phosphorylated by the receptor associated kinases, and then form homo- or heterodimers that translocate to the cell nucleus where they act as transcription activators. The protein encoded by this gene can be activated by various ligands including interferon-alpha, interferon-gamma, EGF, PDGF and IL6. This protein mediates the expression of a variety of genes, which is thought to be important for cell viability in response to different cell stimuli and pathogens. The protein plays an important role in immune responses to viral, fungal and mycobacterial pathogens. Mutations in this gene are associated with Immunodeficiency 31B, 31A, and 31C.

Component

Catalog No.	Product Name	Applications	Cross-Reactivity
AP0135	Phospho-STAT1-Y701 Rabbit pAb	ELISA, WB, IHC-P	Human, Mouse, Rat
A12075	STAT1 Rabbit pAb	ELISA, WB, IHC-P, IF/ICC, IP	Human, Mouse, Rat

Immunogen Information

Gene ID 6772
Swiss Prot P42224

Immunogen

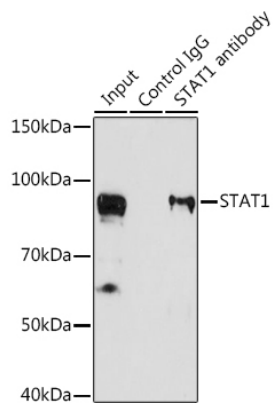
A phospho specific peptide corresponding to residues surrounding Y701 of human STAT1
A synthetic peptide corresponding to a sequence within amino acids 650-750 of human STAT1 (NP_009330.1). A synthetic phosphorylated peptide around Y701 of human STAT1 (NP_009330.1).

A synthetic peptide corresponding to a sequence within amino acids 650-750 of human STAT1 (NP_009330.1).

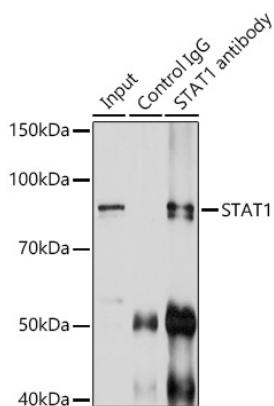
Synonyms

CANDF7; IMD31A; IMD31B; IMD31C; ISGF-3; STAT91

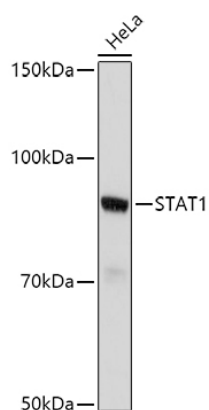
Validation Data



Immunoprecipitation analysis of 200 µg extracts of U-87MG cells using 3 µg STAT1 antibody (A12075). Western blot was performed from the immunoprecipitate using STAT1 antibody (A12075) at a dilution of 1:1000.

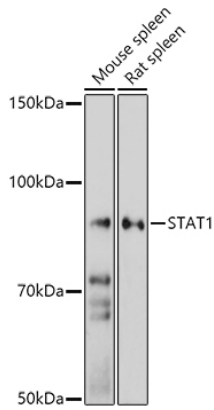


Immunoprecipitation analysis of 200 µg extracts of U-87MG cells using 3 µg STAT1 Rabbit pAb (A12075). Western blot was performed from the immunoprecipitate using STAT1 Rabbit pAb (A12075) at a dilution of 1:500.

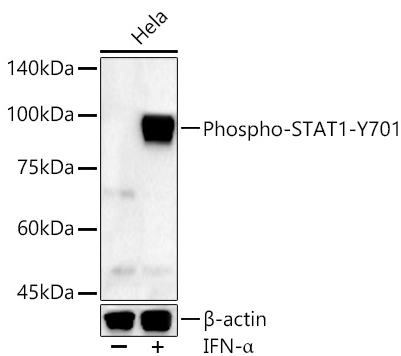


Western blot analysis of lysates from HeLa cells, using STAT1 Rabbit pAb (A12075) at 1:500 dilution. Secondary antibody: HRP Goat Anti-Rabbit IgG (H+L) (AS014) at 1:10000 dilution. Lysates/proteins: 25µg per lane. Blocking buffer: 3% nonfat dry milk in TBST. Detection: ECL Basic Kit (RM00020). Exposure time: 30s.

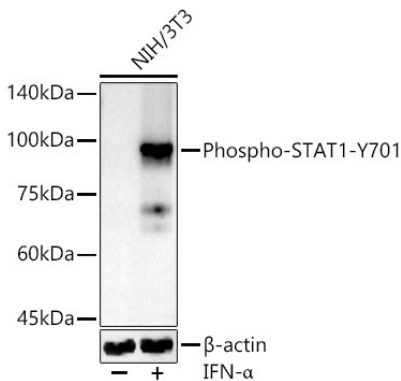
Validation Data



Western blot analysis of various lysates using STAT1 Rabbit pAb (A12075) at 1:500 dilution.
Secondary antibody: HRP Goat Anti-Rabbit IgG (H+L) (AS014) at 1:10000 dilution.
Lysates/proteins: 25µg per lane.
Blocking buffer: 3% nonfat dry milk in TBST.
Detection: ECL Enhanced Kit (RM00021).
Exposure time: 180.

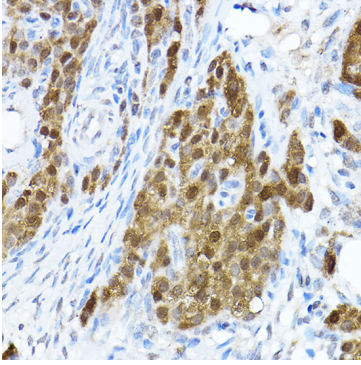


Western blot analysis of lysates from HeLa cells, using Phospho-STAT1-Y701 (AP0135) at 1:630 dilution. HeLa cells were treated by TNF-α (20 ng/ml) at 37°C for 30 minutes.
Secondary antibody: HRP Goat Anti-Rabbit IgG (H+L) (AS014) at 1:10000 dilution.
Lysates/proteins: 25µg per lane.
Blocking buffer: 3% nonfat dry milk in TBST.
Detection: ECL Basic Kit (RM00020).
Exposure time: 180s.

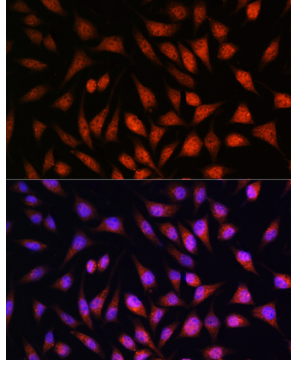


Western blot analysis of lysates from NIH/3T3 cells, using Phospho-STAT1-Y701 (AP0135) at 1:630 dilution. NIH/3T3 cells were treated by TNF-α (20 ng/ml) at 37°C for 30 minutes.
Secondary antibody: HRP Goat Anti-Rabbit IgG (H+L) (AS014) at 1:10000 dilution.
Lysates/proteins: 25µg per lane.
Blocking buffer: 3% nonfat dry milk in TBST.
Detection: ECL Basic Kit (RM00020).
Exposure time: 180s.

Validation Data



Immunohistochemistry analysis of paraffin-embedded rat ovary using STAT1 Rabbit pAb (A12075) at dilution of 1:100 (40x lens). Perform high pressure antigen retrieval with 10 mM citrate buffer pH 6.0 before commencing with IHC staining protocol.



Immunofluorescence analysis of L929 cells using STAT1 Rabbit pAb (A12075) at dilution of 1:100. Secondary antibody: Cy3 Goat Anti-Rabbit IgG (H+L) (AS007) at 1:500 dilution. Blue: DAPI for nuclear staining.