

[One Step] ARHGDIA Antibody Kit

Catalog No.: RK05623

Basic Information

Observed MW

Calculated MW

Category

Primary antibody

Background

Component

Catalog No.	Product Name	Applications	Cross-Reactivity
AS014	HRP-conjugated Goat anti-Rabbit IgG (H+L)	ELISA, WB, IHC-P, DB	
A1214	[KO Validated] RhoGDI Rabbit pAb	ELISA, WB, IF/ICC	Human, Mouse, Rat

Recommended Dilutions

AS014 ELISA 1:5000 - 1:10000

A1214 WB 1:500 - 1:1000

For more information please visit
www.abclonal.com

Product Information

Source **Isotype**

Purification

Storage

Immunogen Information

Gene ID

Swiss Prot

Immunogen

Rabbit IgG

Recombinant fusion protein containing a sequence corresponding to amino acids 1-204 of human RhoGDI (NP_001172006.1).

Synonyms

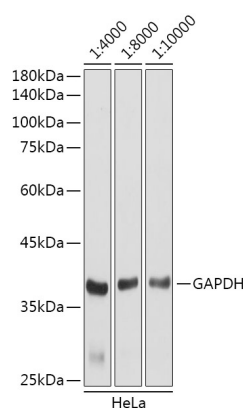
Contact

 | 400-999-6126

 | cn.market@abclonal.com.cn

 | www.abclonal.com.cn

Validation Data



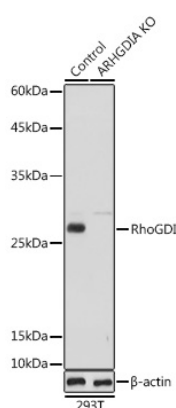
Western blot analysis of lysates from HeLa cells, using GAPDH (AC001) antibody as the primary antibody at dilution of 1:80000.

Secondary antibody: using HRP Goat Anti-Rabbit IgG (H+L) antibody (AS014) at 1:4000-1:10000 dilution. Lysates/proteins: 25µg per lane.

Blocking buffer: 3% nonfat dry milk in TBST.

Detection: ECL Basic Kit (RM00020).

Exposure time: 3s.



Western blot analysis of extracts from normal (control) and RhoGDI knockout (KO) 293T cells, using RhoGDI antibody (A1214) at 1:1000 dilution.

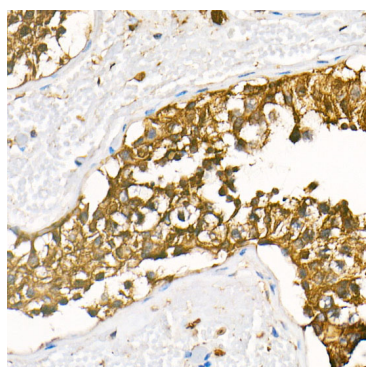
Secondary antibody: HRP Goat Anti-Rabbit IgG (H+L) (AS014) at 1:10000 dilution.

Lysates/proteins: 25µg per lane.

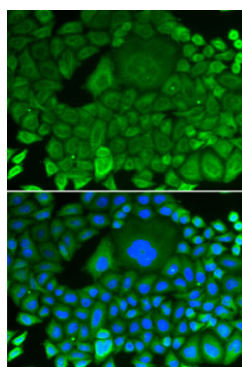
Blocking buffer: 3% nonfat dry milk in TBST.

Detection: ECL Basic Kit (RM00020).

Exposure time: 1s.



Immunohistochemistry analysis of HRP Goat Anti-Rabbit IgG (H+L) in paraffin-embedded human testis tissue using HRP Goat Anti-Rabbit IgG (H+L) (AS014) at a dilution of 1:100 (40x lens). High pressure antigen retrieval was performed with 0.01 M citrate buffer (pH 6.0) prior to IHC staining.



Immunofluorescence analysis of HeLa cells using RhoGDI antibody (A1214). Blue: DAPI for nuclear staining.