

[One Step] BMP5 Antibody Kit

Catalog No.: RK05627

Basic Information

Observed MW

Calculated MW

Category

Primary antibody

Background

Component

Catalog No.	Product Name	Applications	Cross-Reactivity
AS014	HRP Goat Anti-Rabbit IgG (H+L)	ELISA, WB, IHC-P	
A8401	BMP5 Rabbit pAb	ELISA, WB, IHC-P	Human, Mouse, Rat

Recommended Dilutions

AS014 ELISA 1:5000 - 1:10000

A8401 WB 1:500 - 1:2000

For more information please visit
www.abclonal.com


Product Information

Source **Isotype**

Purification

Storage

Contact

 | 400-999-6126

 | cn.market@abclonal.com.cn

 | www.abclonal.com.cn

Immunogen Information

Gene ID

Swiss Prot

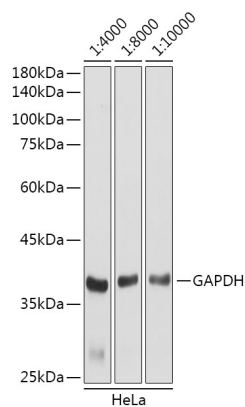
Immunogen

Rabbit IgG

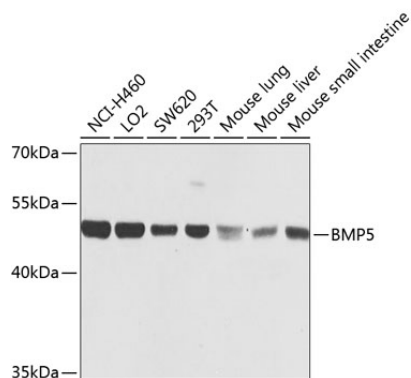
Recombinant fusion protein containing a sequence corresponding to amino acids 317-454 of human BMP5 (NP_066551.1).

Synonyms

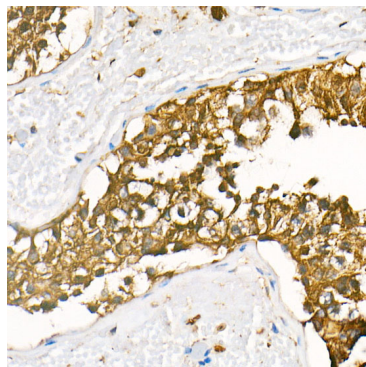
Validation Data



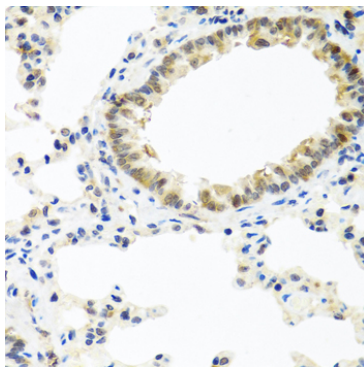
Western blot analysis of lysates from HeLa cells,using GAPDH (AC001) antibody as the primary antibody at dilution of 1:80000.
Secondary antibody: using HRP Goat Anti-Rabbit IgG (H+L) antibody (AS014) at 1:4000-1:10000 dilution.
Lysates/proteins: 25µg per lane.
Blocking buffer: 3% nonfat dry milk in TBST.
Detection: ECL Basic Kit (RM00020).
Exposure time: 3s.



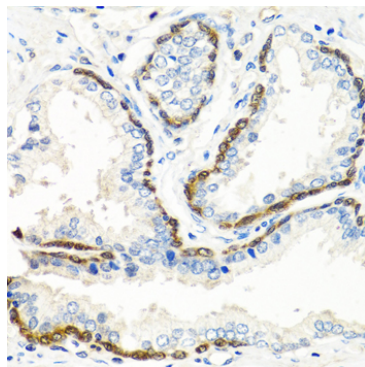
Western blot analysis of extracts of various cell lines, using BMP5 antibody (A8401) at 1:1000 dilution.
Secondary antibody: HRP Goat Anti-Rabbit IgG (H+L) (AS014) at 1:10000 dilution.
Lysates/proteins: 25µg per lane.
Blocking buffer: 3% nonfat dry milk in TBST.
Detection: ECL Basic Kit (RM00020).
Exposure time: 1s.



Immunohistochemistry analysis of HRP Goat Anti-Rabbit IgG (H+L) in paraffin-embedded human testis tissue using HRP Goat Anti-Rabbit IgG (H+L) (AS014) at a dilution of 1:100 (40x lens). High pressure antigen retrieval was performed with 0.01 M citrate buffer (pH 6.0) prior to IHC staining.

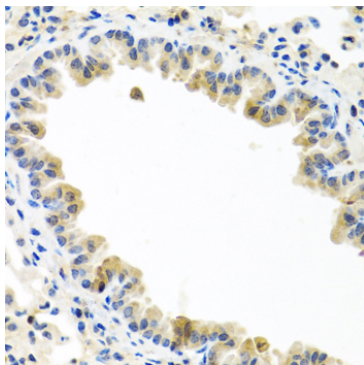


Immunohistochemistry analysis of paraffin-embedded rat lung using BMP5 antibody (A8401) at dilution of 1:100 (40x lens).Perform microwave antigen retrieval with 10 mM PBS buffer pH 7.2 before commencing with IHC staining protocol.



Immunohistochemistry analysis of paraffin-embedded human prostate using BMP5 antibody (A8401) at dilution of 1:100 (40x lens).Perform microwave antigen retrieval with 10 mM PBS buffer pH 7.2 before commencing with IHC staining protocol.

Validation Data



Immunohistochemistry analysis of paraffin-embedded mouse lung using BMP5 antibody (A8401) at dilution of 1:100 (40x lens). Perform microwave antigen retrieval with 10 mM PBS buffer pH 7.2 before commencing with IHC staining protocol.