

[One Step] CBX3 Antibody Kit

Catalog No.: RK05631

Basic Information

Observed MW

Calculated MW

Category

Primary antibody

Background

Component

Catalog No.	Product Name	Applications	Cross-Reactivity
AS014	HRP-conjugated Goat anti-Rabbit IgG (H+L)	ELISA, WB, IHC-P, DB	
A2248	[KO Validated] HP1 gamma/CBX3 Rabbit pAb	ELISA, WB, IHC-P, IF/ICC, IP	Human, Mouse, Rat

Recommended Dilutions

AS014 ELISA 1:5000 - 1:10000

A2248 WB 1:500 - 1:1000

For more information please visit
www.abclonal.com

Product Information

Source **Isotype**

Purification

Storage

Immunogen Information

Gene ID

Swiss Prot


Immunogen

Rabbit IgG

Recombinant fusion protein containing a sequence corresponding to amino acids 1-183 of human HP1 gamma/HP1 gamma/CBX3 (NP_009207.2).

Synonyms

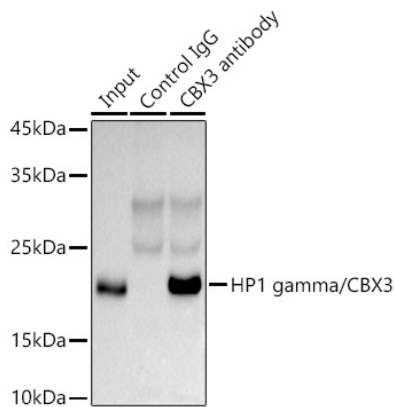
Contact

 | 400-999-6126

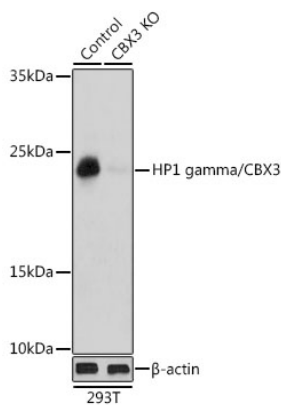
 | cn.market@abclonal.com.cn

 | www.abclonal.com.cn

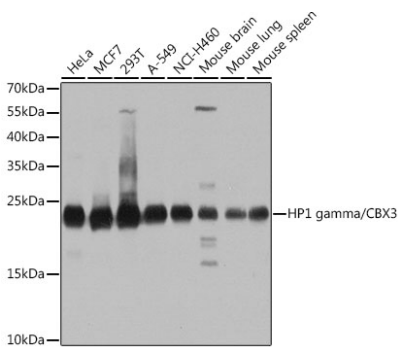
Validation Data



Immunoprecipitation analysis of 300 µg extracts of HeLa cells using 3 µg HP1 gamma/CBX3 antibody (A2248). Western blot was performed from the immunoprecipitate using HP1 gamma/CBX3 antibody (A2248) at a dilution of 1:1000.

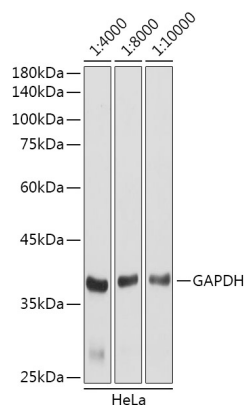


Western blot analysis of lysates from wild type (WT) and HP1 gamma/HP1 gamma/CBX3 knockout (KO) 293T cells, using [KO Validated] HP1 gamma/CBX3 Rabbit pAb (A2248) at 1:1000 dilution. Secondary antibody: HRP Goat Anti-Rabbit IgG (H+L) (AS014) at 1:10000 dilution. Lysates/proteins: 25µg per lane. Blocking buffer: 3% nonfat dry milk in TBST. Detection: ECL Basic Kit (RM00020). Exposure time: 1s.



Western blot analysis of various lysates using [KO Validated] HP1 gamma/CBX3 Rabbit pAb (A2248) at 1:1000 dilution. Secondary antibody: HRP Goat Anti-Rabbit IgG (H+L) (AS014) at 1:10000 dilution. Lysates/proteins: 25µg per lane. Blocking buffer: 3% nonfat dry milk in TBST. Detection: ECL Basic Kit (RM00020). Exposure time: 5s.

Validation Data



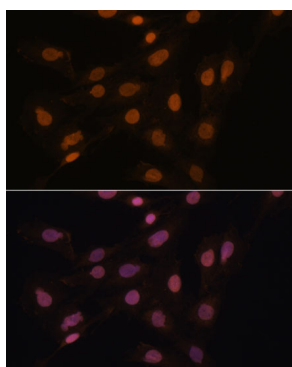
Western blot analysis of lysates from HeLa cells, using GAPDH (AC001) antibody as the primary antibody at dilution of 1:80000.

Secondary antibody: using HRP Goat Anti-Rabbit IgG (H+L) antibody (AS014) at 1:4000-1:10000 dilution. Lysates/proteins: 25µg per lane.

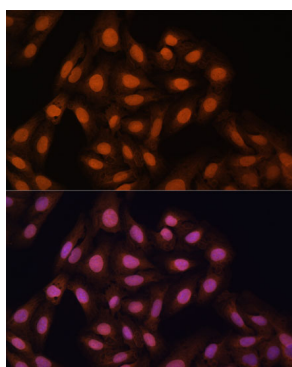
Blocking buffer: 3% nonfat dry milk in TBST.

Detection: ECL Basic Kit (RM00020).

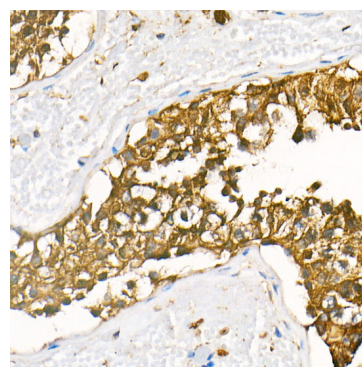
Exposure time: 3s.



Immunofluorescence analysis of C6 cells using [KO Validated] HP1 gamma/CBX3 Rabbit pAb (A2248) at dilution of 1:100. Secondary antibody: Cy3 Goat Anti-Rabbit IgG (H+L) (AS007) at 1:500 dilution. Blue: DAPI for nuclear staining.



Immunofluorescence analysis of U-2 OS cells using [KO Validated] HP1 gamma/CBX3 Rabbit pAb (A2248) at dilution of 1:100. Secondary antibody: Cy3 Goat Anti-Rabbit IgG (H+L) (AS007) at 1:500 dilution. Blue: DAPI for nuclear staining.



Immunohistochemistry analysis of HRP Goat Anti-Rabbit IgG (H+L) in paraffin-embedded human testis tissue using HRP Goat Anti-Rabbit IgG (H+L) (AS014) at a dilution of 1:100 (40x lens). High pressure antigen retrieval was performed with 0.01 M citrate buffer (pH 6.0) prior to IHC staining.