

[One Step] RPS3 Antibody Kit

Catalog No.: RK05703

Basic Information

Observed MW

Calculated MW

Category

Primary antibody

Background

Component

Catalog No.	Product Name	Applications	Cross-Reactivity
AS014	HRP Goat Anti-Rabbit IgG (H+L)	ELISA, WB, IHC-P	
A2533	RPS3 Rabbit pAb	ELISA, WB, IHC-P, IF/ICC	Human, Mouse, Rat

Recommended Dilutions

AS014 ELISA 1:5000 - 1:10000

A2533 WB 1:500 - 1:1000

For more information please visit
www.abclonal.com

Product Information

Source **Isotype**

Purification

Storage

Immunogen Information

Gene ID

Swiss Prot

Immunogen

Rabbit IgG

Recombinant fusion protein containing a sequence corresponding to amino acids 1-243 of human RPS3 (NP_000996.2).

Synonyms

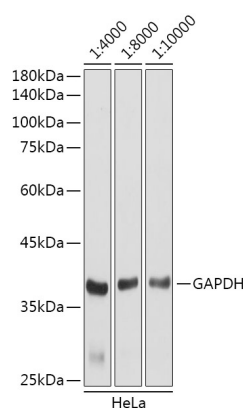
Contact

 | 400-999-6126

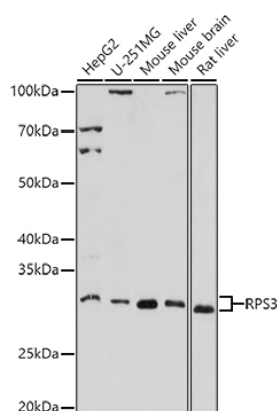
 | cn.market@abclonal.com.cn

 | www.abclonal.com.cn

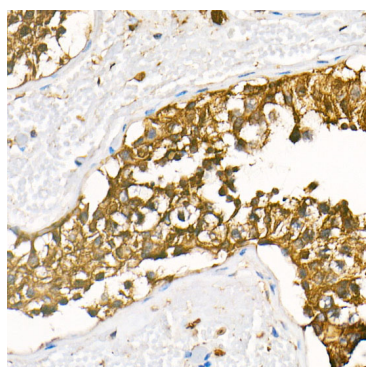
Validation Data



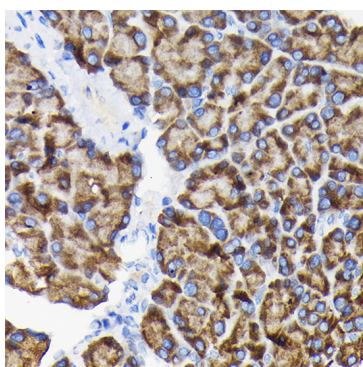
Western blot analysis of lysates from HeLa cells, using GAPDH (AC001) antibody as the primary antibody at dilution of 1:80000.
 Secondary antibody: using HRP Goat Anti-Rabbit IgG (H+L) antibody (AS014) at 1:4000-1:10000 dilution.
 Lysates/proteins: 25µg per lane.
 Blocking buffer: 3% nonfat dry milk in TBST.
 Detection: ECL Basic Kit (RM00020).
 Exposure time: 3s.



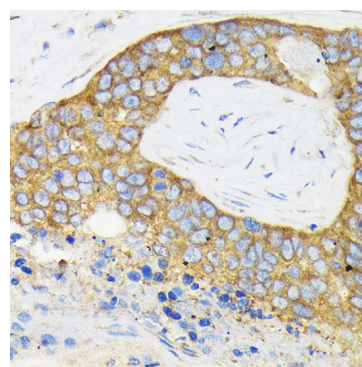
Western blot analysis of extracts of various cell lines, using RPS3 antibody (A2533) at 1:1000 dilution.
 Secondary antibody: HRP Goat Anti-Rabbit IgG (H+L) (AS014) at 1:10000 dilution.
 Lysates/proteins: 25µg per lane.
 Blocking buffer: 3% nonfat dry milk in TBST.
 Detection: ECL Basic Kit (RM00020).
 Exposure time: 180s.



Immunohistochemistry analysis of HRP Goat Anti-Rabbit IgG (H+L) in paraffin-embedded human testis tissue using HRP Goat Anti-Rabbit IgG (H+L) (AS014) at a dilution of 1:100 (40x lens). High pressure antigen retrieval was performed with 0.01 M citrate buffer (pH 6.0) prior to IHC staining.

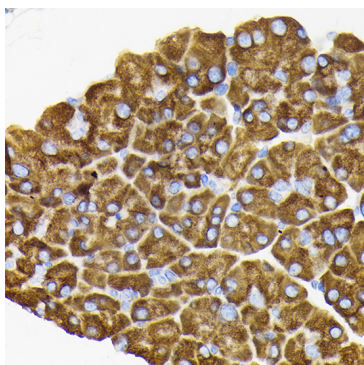


Immunohistochemistry analysis of paraffin-embedded rat pancreas using RPS3 Rabbit pAb (A2533) at dilution of 1:100 (40x lens). Perform microwave antigen retrieval with 10 mM Tris/EDTA buffer pH 9.0 before commencing with IHC staining protocol.

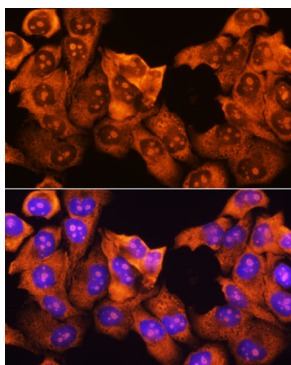


Immunohistochemistry analysis of paraffin-embedded human esophageal cancer using RPS3 Rabbit pAb (A2533) at dilution of 1:100 (40x lens). Perform microwave antigen retrieval with 10 mM Tris/EDTA buffer pH 9.0 before commencing with IHC staining protocol.

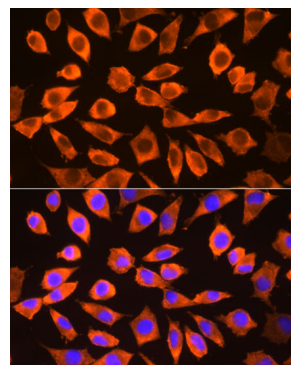
Validation Data



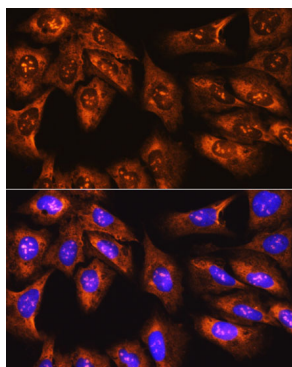
Immunohistochemistry analysis of paraffin-embedded mouse pancreas using RPS3 Rabbit pAb (A2533) at dilution of 1:100 (40x lens). Perform microwave antigen retrieval with 10 mM Tris/EDTA buffer pH 9.0 before commencing with IHC staining protocol.



Immunofluorescence analysis of HeLa cells using RPS3 antibody (A2533) at dilution of 1:100. Blue: DAPI for nuclear staining.



Immunofluorescence analysis of L929 cells using RPS3 antibody (A2533) at dilution of 1:100. Blue: DAPI for nuclear staining.



Immunofluorescence analysis of U-2 OS cells using RPS3 antibody (A2533) at dilution of 1:100. Blue: DAPI for nuclear staining.