

[One Step] 14-3-3 alpha/beta Antibody Kit

Catalog No.: RK05723

Basic Information

Observed MW

Calculated MW

Category

Primary antibody

Background

Component

Catalog No.	Product Name	Applications	Cross-Reactivity
AS014	HRP Goat Anti-Rabbit IgG (H+L)	ELISA, WB, IHC-P	
A1023	14-3-3 alpha/beta Rabbit pAb	ELISA, WB, IHC-P, IF/ICC, IP	Human, Mouse

Recommended Dilutions

AS014 ELISA 1:5000 - 1:10000

A1023 WB 1:500 - 1:2000

For more information please visit
www.abclonal.com

Product Information

Source **Isotype**

Purification

Storage

Immunogen Information

Gene ID

Swiss Prot


Immunogen

Rabbit IgG

A synthetic peptide corresponding to a sequence within amino acids 150-246 of human 14-3-3 alpha/beta (NP_003395.1).

Synonyms

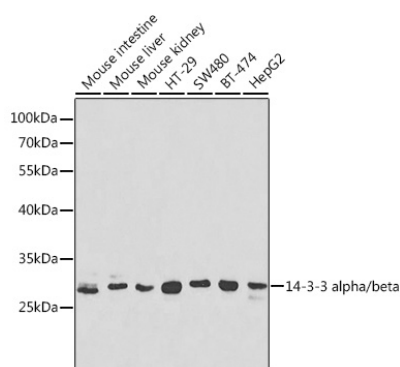
Contact

 | 400-999-6126

 | cn.market@abclonal.com.cn

 | www.abclonal.com.cn

Validation Data

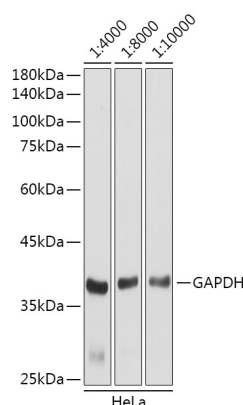


Western blot analysis of extracts of various cell lines, using 14-3-3 alpha/beta antibody (A1023) at 1:1000 dilution.

Secondary antibody: HRP Goat Anti-Rabbit IgG (H+L) (AS014) at 1:10000 dilution.

Lysates/proteins: 25µg per lane.

Blocking buffer: 3% nonfat dry milk in TBST.



Western blot analysis of lysates from HeLa cells, using GAPDH (AC001) antibody as the primary antibody at dilution of 1:80000.

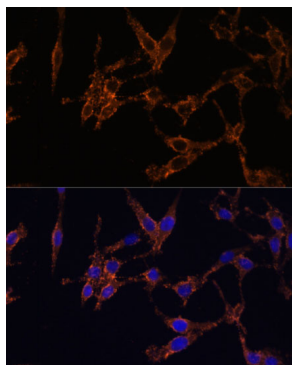
Secondary antibody: using HRP Goat Anti-Rabbit IgG (H+L) antibody (AS014) at 1:4000-1:10000 dilution.

Lysates/proteins: 25µg per lane.

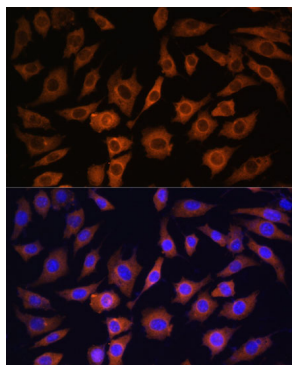
Blocking buffer: 3% nonfat dry milk in TBST.

Detection: ECL Basic Kit (RM00020).

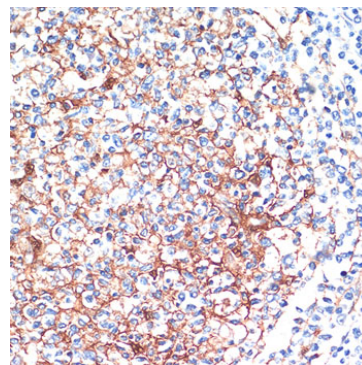
Exposure time: 3s.



Immunofluorescence analysis of HeLa cells using 14-3-3 alpha/beta antibody (A1023) at dilution of 1:100. Blue: DAPI for nuclear staining.

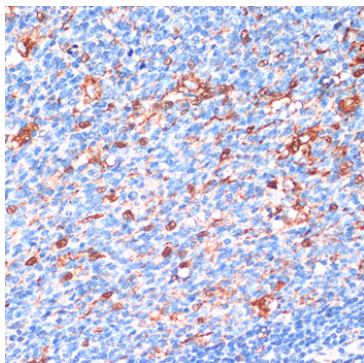


Immunofluorescence analysis of L929 cells using 14-3-3 alpha/beta antibody (A1023) at dilution of 1:100. Blue: DAPI for nuclear staining.

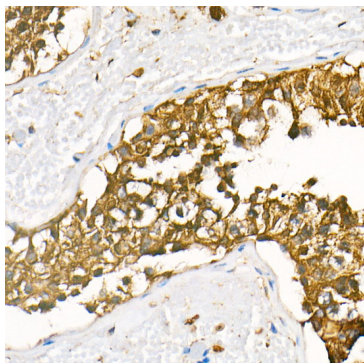


Immunohistochemistry analysis of paraffin-embedded Human tonsil using 14-3-3 alpha/beta antibody (A1023) at dilution of 1:200 (40x lens). Perform microwave antigen retrieval with 10 mM PBS buffer pH 7.2 before commencing with IHC staining protocol.

Validation Data



Immunohistochemistry analysis of paraffin-embedded Human appendix using 14-3-3 alpha/beta antibody (A1023) at dilution of 1:200 (40x lens). Perform microwave antigen retrieval with 10 mM PBS buffer pH 7.2 before commencing with IHC staining protocol.



Immunohistochemistry analysis of HRP Goat Anti-Rabbit IgG (H+L) in paraffin-embedded human testis tissue using HRP Goat Anti-Rabbit IgG (H+L) (AS014) at a dilution of 1:100 (40x lens). High pressure antigen retrieval was performed with 0.01 M citrate buffer (pH 6.0) prior to IHC staining.