

# [One Step] RPS3A antibody Kit

Catalog No.: RK05728

## Basic Information

**Observed MW**

**Calculated MW**

**Category**

Primary antibody

## Background

### Component

Catalog No.	Product Name	Applications	Cross-Reactivity
AS014	HRP-conjugated Goat anti-Rabbit IgG (H+L)	ELISA, WB, IHC-P, DB	
A5885	RPS3A Rabbit pAb	ELISA, WB, IHC-P, IF/ICC, IP	Human, Mouse, Rat

## Recommended Dilutions

**AS014 ELISA** 1:5000 - 1:10000

**A5885 WB** 1:500 - 1:2000

For more information please visit  
[www.abclonal.com](http://www.abclonal.com)

## Product Information

**Source**                      **Isotype**

**Purification**

**Storage**

## Immunogen Information

**Gene ID**

**Swiss Prot**


**Immunogen**

Rabbit IgG

Recombinant fusion protein containing a sequence corresponding to amino acids 1-264 of human RPS3A (NP\_000997.1).

**Synonyms**

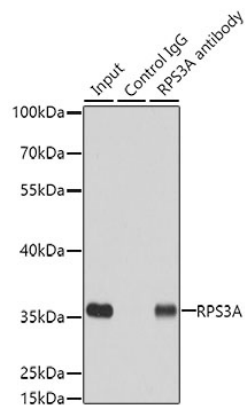
## Contact

 | 400-999-6126

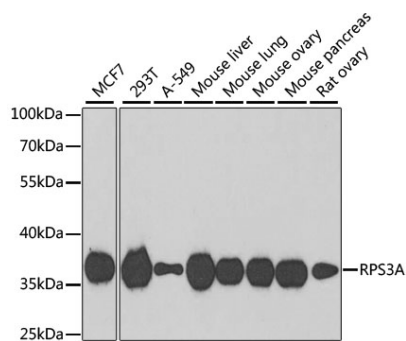
 | [cn.market@abclonal.com.cn](mailto:cn.market@abclonal.com.cn)

 | [www.abclonal.com.cn](http://www.abclonal.com.cn)

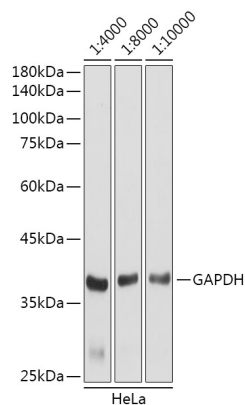
Validation Data



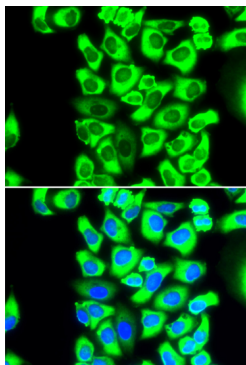
Immunoprecipitation analysis of 200 µg extracts of MCF7 cells using 3 µg RPS3A antibody (A5885). Western blot was performed from the immunoprecipitate using RPS3A antibody (A5885) at a dilution of 1:500.



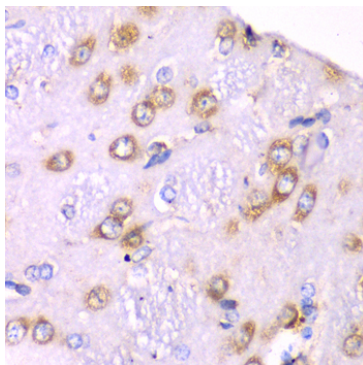
Western blot analysis of various lysates using RPS3A Rabbit pAb (A5885) at 1:1000 dilution. Secondary antibody: HRP Goat Anti-Rabbit IgG (H+L) (AS014) at 1:10000 dilution. Lysates/proteins: 25µg per lane. Blocking buffer: 3% nonfat dry milk in TBST. Detection: ECL Basic Kit (RM00020). Exposure time: 90s.



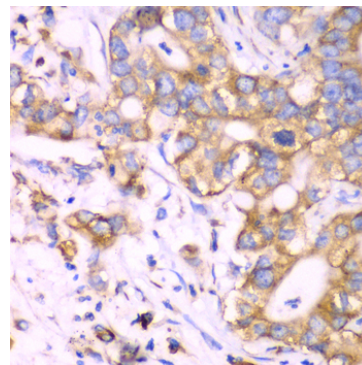
Western blot analysis of lysates from HeLa cells,using GAPDH (AC001) antibody as the primary antibody at dilution of 1:80000. Secondary antibody: using HRP Goat Anti-Rabbit IgG (H+L) antibody (AS014) at 1:4000-1:10000 dilution. Lysates/proteins: 25µg per lane. Blocking buffer: 3% nonfat dry milk in TBST. Detection: ECL Basic Kit (RM00020). Exposure time: 3s.



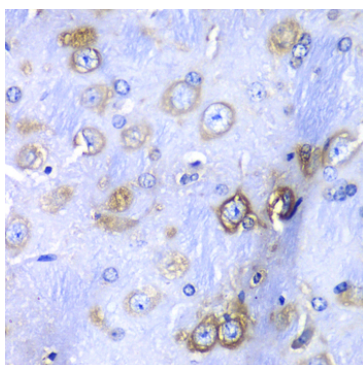
Immunofluorescence analysis of MCF-7 cells using RPS3A Rabbit pAb (A5885). Secondary antibody: Cy3 Goat Anti-Rabbit IgG (H+L) (AS007) at 1:500 dilution. Blue: DAPI for nuclear staining.



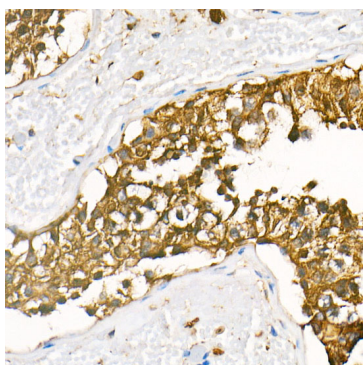
Immunohistochemistry analysis of RPS3A in paraffin-embedded rat brain using RPS3A Rabbit pAb (A5885) at dilution of 1:100 (40x lens). Perform microwave antigen retrieval with 10 mM PBS buffer pH 7.2 before commencing with IHC staining protocol.



Immunohistochemistry analysis of RPS3A in paraffin-embedded human liver cancer using RPS3A Rabbit pAb (A5885) at dilution of 1:100 (40x lens). Perform microwave antigen retrieval with 10 mM PBS buffer pH 7.2 before commencing with IHC staining protocol.



Immunohistochemistry analysis of RPS3A in paraffin-embedded mouse brain using RPS3A Rabbit pAb (A5885) at dilution of 1:100 (40x lens). Perform microwave antigen retrieval with 10 mM PBS buffer pH 7.2 before commencing with IHC staining protocol.



Immunohistochemistry analysis of HRP Goat Anti-Rabbit IgG (H+L) in paraffin-embedded human testis tissue using HRP Goat Anti-Rabbit IgG (H+L) (AS014) at a dilution of 1:100 (40x lens). High pressure antigen retrieval was performed with 0.01 M citrate buffer (pH 6.0) prior to IHC staining.