

# [One Step] Hsp90 $\beta$ antibody Kit

Catalog No.: RK05737

## Basic Information

**Observed MW**

**Calculated MW**

**Category**

Primary antibody

## Background

### Component

Catalog No.	Product Name	Applications	Cross-Reactivity
AS014	HRP-conjugated Goat anti-Rabbit IgG (H+L)	ELISA,WB,IHC-P,DB	
A1087	[KO Validated] Hsp90 $\beta$ Rabbit pAb	ELISA,WB,IHC-P	Human, Mouse, Rat

## Recommended Dilutions

**AS014 ELISA** 1:5000 - 1:10000

**A1087 WB** 1:500 - 1:1000

For more information please visit  
[www.abclonal.com](http://www.abclonal.com)

## Product Information

**Source**                      **Isotype**

**Purification**

**Storage**

## Contact

 | 400-999-6126

 | [cn.market@abclonal.com.cn](mailto:cn.market@abclonal.com.cn)

 | [www.abclonal.com.cn](http://www.abclonal.com.cn)

## Immunogen Information

**Gene ID**

**Swiss Prot**

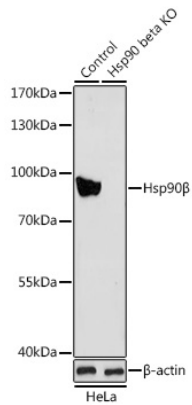
**Immunogen**

Rabbit IgG

Recombinant fusion protein containing a sequence corresponding to amino acids 1-300 of human Hsp90 $\beta$  (NP\_031381.2).

**Synonyms**

## Validation Data



Western blot analysis of lysates from wild type (WT) and Hsp90 $\beta$  knockout (KO) HeLa cells, using [KO Validated] Hsp90 $\beta$  Rabbit pAb (A1087) at 1:1000 dilution.

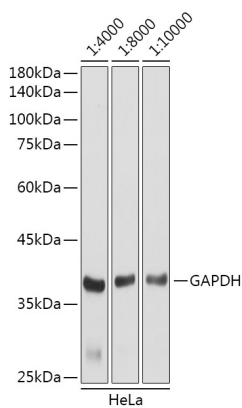
Secondary antibody: HRP Goat Anti-Rabbit IgG (H+L) (AS014) at 1:10000 dilution.

Lysates/proteins: 25 $\mu$ g per lane.

Blocking buffer: 3% nonfat dry milk in TBST.

Detection: ECL Basic Kit (RM00020).

Exposure time: 90s.



Western blot analysis of lysates from HeLa cells, using GAPDH (AC001) antibody as the primary antibody at dilution of 1:80000.

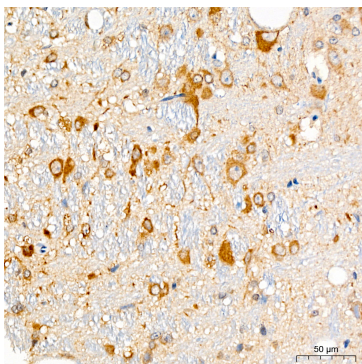
Secondary antibody: using HRP Goat Anti-Rabbit IgG (H+L) antibody (AS014) at 1:4000-1:10000 dilution.

Lysates/proteins: 25 $\mu$ g per lane.

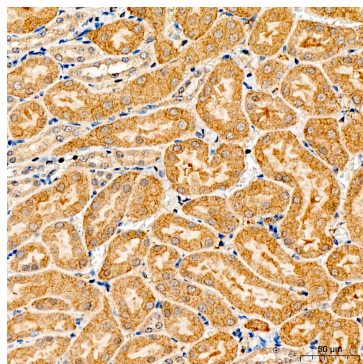
Blocking buffer: 3% nonfat dry milk in TBST.

Detection: ECL Basic Kit (RM00020).

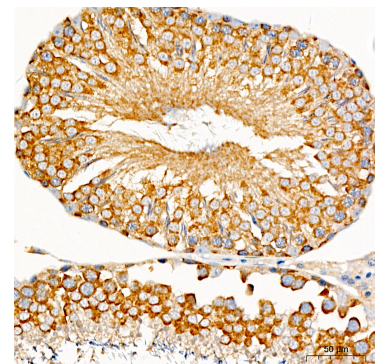
Exposure time: 3s.



Immunohistochemistry analysis of Hsp90 $\beta$  in paraffin-embedded Rat brain tissue using [KO Validated] Hsp90 $\beta$  Rabbit pAb (A1087) at a dilution of 1:100 (40x lens). High pressure antigen retrieval performed with 0.01M Citrate Buffer (pH 6.0) prior to IHC staining.



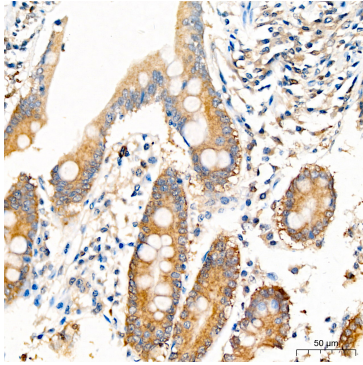
Immunohistochemistry analysis of Hsp90 $\beta$  in paraffin-embedded Mouse kidney tissue using [KO Validated] Hsp90 $\beta$  Rabbit pAb (A1087) at a dilution of 1:100 (40x lens). High pressure antigen retrieval performed with 0.01M Citrate Buffer (pH 6.0) prior to IHC staining.



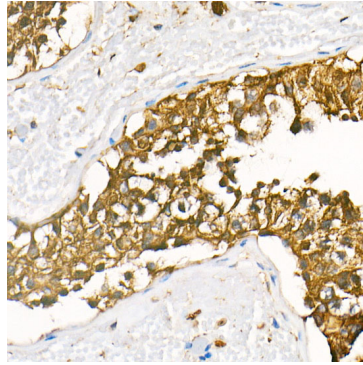
Immunohistochemistry analysis of Hsp90 $\beta$  in paraffin-embedded Rat testis tissue using [KO Validated] Hsp90 $\beta$  Rabbit pAb (A1087) at a dilution of 1:100 (40x lens). High pressure antigen retrieval performed with 0.01M Citrate Buffer (pH 6.0) prior to IHC staining.

## Validation Data

---



Immunohistochemistry analysis of Hsp90 $\beta$  in paraffin-embedded Human small intestine tissue using [KO Validated] Hsp90 $\beta$  Rabbit pAb (A1087) at a dilution of 1:100 (40x lens). High pressure antigen retrieval performed with 0.01M Citrate Buffer(pH 6.0) prior to IHC staining.



Immunohistochemistry analysis of HRP Goat Anti-Rabbit IgG (H+L) in paraffin-embedded human testis tissue using HRP Goat Anti-Rabbit IgG (H+L) (AS014) at a dilution of 1:100 (40x lens). High pressure antigen retrieval was performed with 0.01 M citrate buffer (pH 6.0) prior to IHC staining.