

# [One Step] RAB7A antibody Kit

Catalog No.: RK05740

## Basic Information

**Observed MW**

**Calculated MW**

**Category**

Primary antibody

## Background

### Component

Catalog No.	Product Name	Applications	Cross-Reactivity
AS014	HRP-conjugated Goat anti-Rabbit IgG (H+L)	ELISA, WB, IHC-P, DB	
A12784	RAB7 Rabbit pAb	ELISA, WB, IP	Human, Mouse, Rat

## Recommended Dilutions

**AS014 ELISA** 1:5000 - 1:10000

**A12784 WB** 1:500 - 1:1000

For more information please visit  
[www.abclonal.com](http://www.abclonal.com)

## Product Information

**Source**                      **Isotype**

**Purification**

**Storage**

## Immunogen Information

**Gene ID**

**Swiss Prot**


**Immunogen**

Rabbit IgG

A synthetic peptide corresponding to a sequence within amino acids 100-207 of human RAB7 (NP\_004628.4).

**Synonyms**

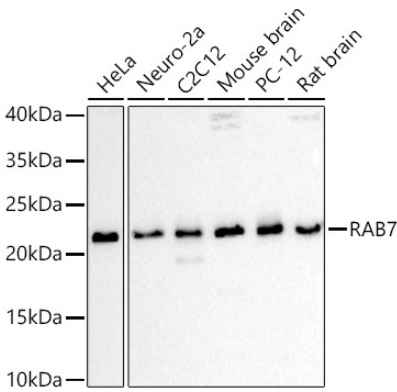
## Contact

 | 400-999-6126

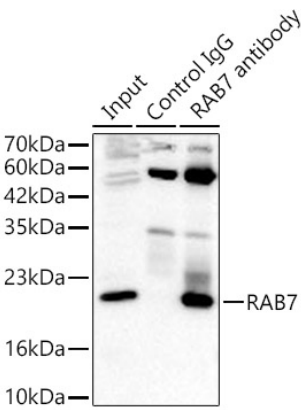
 | [cn.market@abclonal.com.cn](mailto:cn.market@abclonal.com.cn)

 | [www.abclonal.com.cn](http://www.abclonal.com.cn)

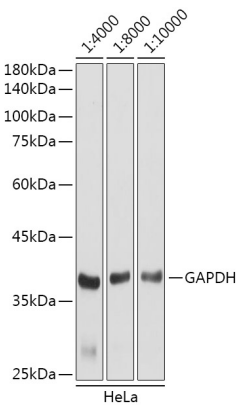
Validation Data



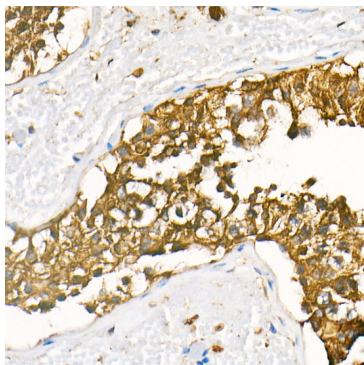
Western blot analysis of various lysates using RAB7 Rabbit pAb (A12784) at 1:1000 dilution. Secondary antibody: HRP Goat Anti-Rabbit IgG (H+L) (AS014) at 1:10000 dilution. Lysates/proteins: 25µg per lane. Blocking buffer: 3% nonfat dry milk in TBST. Detection: ECL Basic Kit (RM00020). Exposure time: 60s.



Immunoprecipitation analysis of 300ug extracts of HeLa cells using 3ug RAB7 Rabbit pAb (A12784 1:200). Western blot was performed from the immunoprecipitate using RAB7 Rabbit pAb (A12784) at a dilution of 1:1000.



Western blot analysis of lysates from HeLa cells, using GAPDH (AC001) antibody as the primary antibody at dilution of 1:80000. Secondary antibody: using HRP Goat Anti-Rabbit IgG (H+L) antibody (AS014) at 1:4000-1:10000 dilution. Lysates/proteins: 25µg per lane. Blocking buffer: 3% nonfat dry milk in TBST. Detection: ECL Basic Kit (RM00020). Exposure time: 3s.



Immunohistochemistry analysis of HRP Goat Anti-Rabbit IgG (H+L) in paraffin-embedded human testis tissue using HRP Goat Anti-Rabbit IgG (H+L) (AS014) at a dilution of 1:100 (40x lens). High pressure antigen retrieval was performed with 0.01 M citrate buffer (pH 6.0) prior to IHC staining.