

Phospho-B-Raf-S445 Antibody Kit (AP0012 & A0038)

Catalog No.: RK05746

Basic Information

Observed MW

100kDa

Calculated MW

84kDa

Category

Primary antibody

Recommended Dilutions

AP0012 WB 1:500 - 1:2000**A0038 WB** 1:100 - 1:500For more information please visit
www.abclonal.com

Product Information

Source Rabbit
Isotype IgG**Purification**


Affinity purification

Storage

Store at -20°C. Avoid freeze / thaw cycles.

Buffer: PBS with 0.02% sodium azide, 50% glycerol, pH7.3.

Contact

 | 400-999-6126 | cn.market@abclonal.com.cn | www.abclonal.com.cn

Background

This gene encodes a protein belonging to the RAF family of serine/threonine protein kinases. This protein plays a role in regulating the MAP kinase/ERK signaling pathway, which affects cell division, differentiation, and secretion. Mutations in this gene, most commonly the V600E mutation, are the most frequently identified cancer-causing mutations in melanoma, and have been identified in various other cancers as well, including non-Hodgkin lymphoma, colorectal cancer, thyroid carcinoma, non-small cell lung carcinoma, hairy cell leukemia and adenocarcinoma of lung. Mutations in this gene are also associated with cardiofaciocutaneous, Noonan, and Costello syndromes, which exhibit overlapping phenotypes. A pseudogene of this gene has been identified on the X chromosome.

Component

Catalog No.	Product Name	Applications	Cross-Reactivity
AP0012	Phospho-B-Raf-S445 Rabbit pAb	ELISA, WB	Human, Rat
A0038	B-Raf Rabbit pAb	ELISA, WB	Human

Immunogen Information

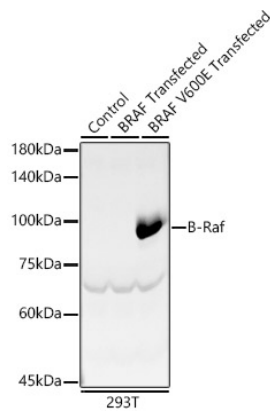
Gene ID
673**Swiss Prot**
P15056**Immunogen**

A synthetic phosphorylated peptide around S445 of human BRAF (NP_004324.2). Recombinant fusion protein containing a sequence corresponding to amino acids 280-460 of human B-Raf (NP_004324.2).

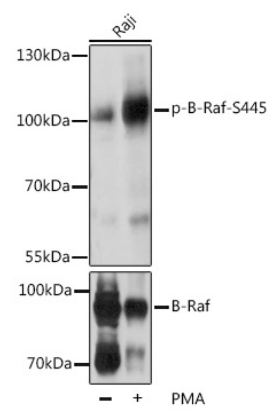
Synonyms

BRAF; B-RAF1; B-raf; BRAF1; NS7; RAFB1

Validation Data



Western blot analysis of 293F, using B-Raf antibody (A0038) at 1:400 dilution.
Secondary antibody: HRP Goat Anti-Rabbit IgG (H+L) (AS014) at 1:10000 dilution.
Lysates/proteins: 25µg per lane.
Blocking buffer: 3% nonfat dry milk in TBST.
Detection: ECL Basic Kit (RM00020).
Exposure time: 90s.



Western blot analysis of extracts of Raji cells, using Phospho-B-Raf-S445 pAb (AP0012) at 1:2000 dilution or BRAF antibody (A0038).Raji cells were treated by PMA/TPA (200nM) for 30 minutes.
Secondary antibody: HRP Goat Anti-Rabbit IgG (H+L) (AS014) at 1:10000 dilution.
Lysates/proteins: 25µg per lane.
Blocking buffer: 3% BSA.
Detection: ECL Basic Kit (RM00020).
Exposure time: 10s.