

# Phospho-STK11-T189 Antibody kit

Catalog No.: RK05754

## Basic Information

### Observed MW

54kDa

### Calculated MW

49kDa

### Category

Primary antibody

## Recommended Dilutions

**AP0603 WB** 1:500 - 1:2000

**A2122 WB** 1:500 - 1:1000

For more information please visit  
[www.abclonal.com](http://www.abclonal.com)

## Product Information

**Source** Rabbit  
**Isotype** IgG

### Purification

Affinity purification

### Storage

Store at -20°C. Avoid freeze / thaw cycles.  
Buffer: PBS with 0.02% sodium azide, 50% glycerol, pH7.3.

## Contact

☎ | 400-999-6126

✉ | [cn.market@abclonal.com.cn](mailto:cn.market@abclonal.com.cn)

🌐 | [www.abclonal.com.cn](http://www.abclonal.com.cn)

## Background

The protein encoded by this gene is a serine/threonine kinase that regulates cell polarity and energy metabolism and functions as a tumor suppressor. Mutations in this gene have been associated with the autosomal dominant Peutz-Jeghers syndrome, as well as with skin, pancreatic, and testicular cancers.

## Component

Catalog No.	Product Name	Applications	Cross-Reactivity
AP0603	Phospho-STK11-T189 Rabbit pAb	ELISA, WB	Human, Mouse, Rat
A2122	LKB1 Rabbit pAb	ELISA, WB, IHC-P, IF/ICC	Human, Mouse, Rat

## Immunogen Information

**Gene ID** 6794  
**Swiss Prot** Q15831

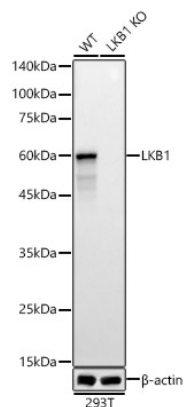
### Immunogen

A synthetic phosphorylated peptide around T189 of human STK11 (NP\_000446.1).  
Recombinant fusion protein containing a sequence corresponding to amino acids 134-433 of human LKB1 (NP\_000446.1).

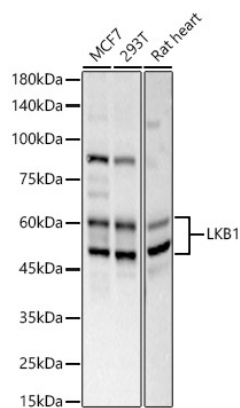
### Synonyms

LKB1; PJS; hLKB1; STK11

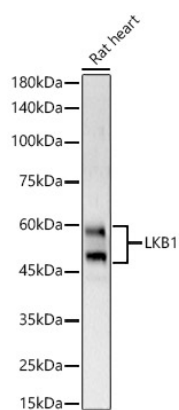
Validation Data



Western blot analysis of various lysates, using [KO Validated] LKB1 Rabbit pAb (A2122) at 1:7000 dilution.  
Secondary antibody: HRP Goat Anti-Rabbit IgG (H+L) (AS014) at 1:10000 dilution.  
Lysates/proteins: 25µg per lane.  
Blocking buffer: 3% nonfat dry milk in TBST.  
Detection: ECL Basic Kit (RM00020).  
Exposure time: 60s.



Western blot analysis of various lysates, using LKB1 antibody (A2122) at 1:600 dilution.  
Secondary antibody: HRP Goat Anti-Rabbit IgG (H+L) (AS014) at 1:10000 dilution.  
Lysates/proteins: 25µg per lane.  
Blocking buffer: 3% nonfat dry milk in TBST.  
Detection: ECL Basic Kit (RM00020).  
Exposure time: 30s.



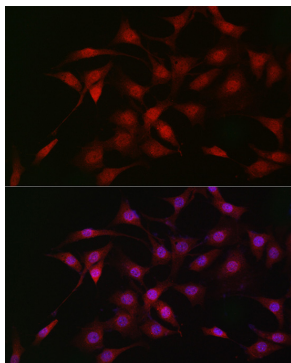
Western blot analysis of Mouse heart, using LKB1 antibody (A2122) at 1:600 dilution.  
Secondary antibody: HRP Goat Anti-Rabbit IgG (H+L) (AS014) at 1:10000 dilution.  
Lysates/proteins: 25µg per lane.  
Blocking buffer: 3% nonfat dry milk in TBST.  
Detection: ECL Basic Kit (RM00020).  
Exposure time: 30s.



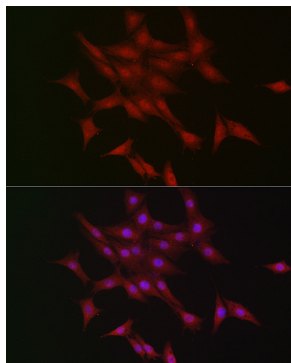
Western blot analysis of lysates from A-431 cells, using Phospho-STK11-T189 Rabbit pAb (A2122).A-431 cells were treated by 10% FBS for after serum-starvation overnight.  
Secondary antibody: HRP Goat Anti-Rabbit IgG (H+L) (AS014) at 1:10000 dilution.  
Lysates/proteins: 25µg per lane.  
Blocking buffer: 3% BSA.  
Detection: ECL Basic Kit (RM00020).

## Validation Data

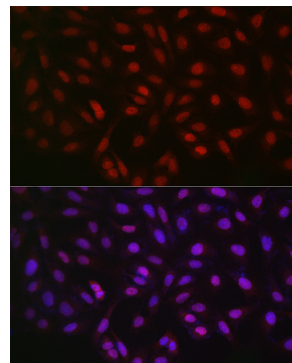
---



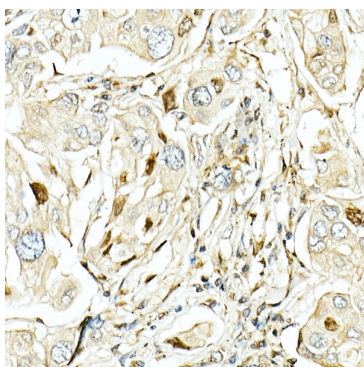
Immunofluorescence analysis of NIH/3T3 cells using LKB1 Rabbit pAb (A2122) at dilution of 1:50 (40x lens). Blue: DAPI for nuclear staining.



Immunofluorescence analysis of PC-12 cells using LKB1 Rabbit pAb (A2122) at dilution of 1:50 (40x lens). Blue: DAPI for nuclear staining.



Immunofluorescence analysis of U2OS cells using LKB1 Rabbit pAb (A2122) at dilution of 1:50 (40x lens). Blue: DAPI for nuclear staining.



Immunohistochemistry analysis of paraffin-embedded human lung cancer using LKB1 Rabbit pAb (A2122) at dilution of 1:50 (40x lens). Perform high pressure antigen retrieval with 10 mM citrate buffer pH 6.0 before commencing with IHC staining protocol.